

Assessment Map Roads & Recreation Sites

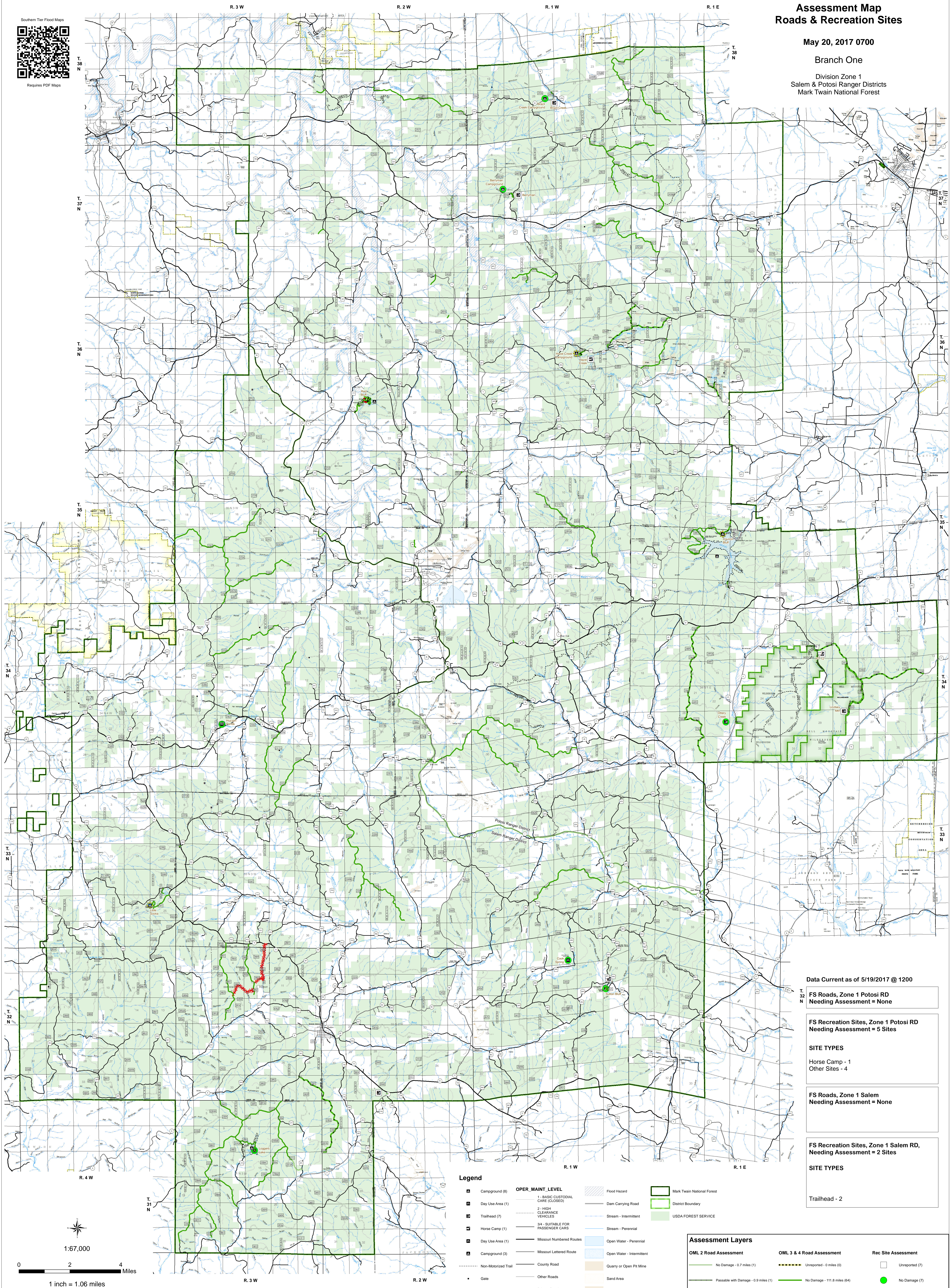
May 20, 2017 0700

Branch One

Division Zone 1
Salem & Potosi Ranger Districts
Mark Twain National Forest



Requires PDF Maps



Data Current as of 5/19/2017 @ 1200

FS Roads, Zone 1 Potosi RD
Needing Assessment = None

FS Recreation Sites, Zone 1 Potosi RD
Needing Assessment = 5 Sites

SITE TYPES

Horse Camp - 1
Other Sites - 4

FS Roads, Zone 1 Salem
Needing Assessment = None

FS Recreation Sites, Zone 1 Salem RD,
Needing Assessment = 2 Sites

SITE TYPES

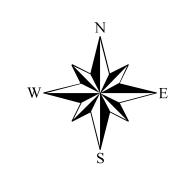
Trailhead - 2

Legend

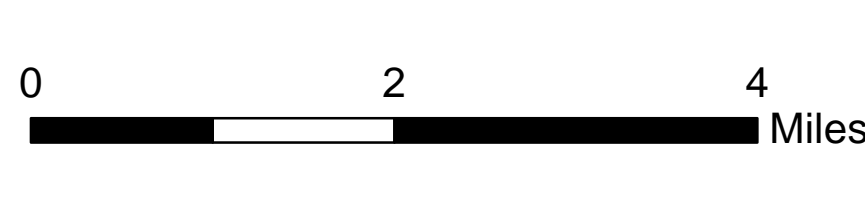
- Campground (8)
 - Day Use Area (1)
 - Trailhead (7)
 - Horse Camp (1)
 - Day Use Area (1)
 - Campground (3)
 - Non-Motorized Trail
 - Gate
 - Barrier
- OPER_MAINT_LEVEL**
- 1 - BASIC CUSTODIAL CARE (CLOSED)
 - 2 - HIGH CLEARANCE VEHICLES
 - 3/4 - SUITABLE FOR PASSENGER CARS
 - Missouri Numbered Routes
 - Missouri Lettered Route
 - County Road
 - Other Roads
 - Private Road
 - Railroad
- Flood Hazard
 - Dam Carrying Road
 - Stream - Intermittent
 - Stream - Perennial
 - Open Water - Perennial
 - Open Water - Intermittent
 - Quarry or Open Pit Mine
 - Sand Area
 - Strip Mine
 - Tailings
 - Tailings Pond
- Mark Twain National Forest
 - District Boundary
 - USDA FOREST SERVICE

Assessment Layers

- OML 2 Road Assessment**
- No Damage - 0.7 miles (1)
 - Passable with Damage - 0.9 miles (1)
 - Impassible/Closed - 1.1 miles (2)
- OML 3 & 4 Road Assessment**
- Unreported - 0 miles (0)
 - No Damage - 115.8 miles (64)
 - Passable with Damage - 26.3 miles (16)
 - Impassible/Closed - 3.5 miles (2)
- Rec Site Assessment**
- Unreported (7)
 - No Damage (7)
 - Open/minor damage (3)
 - Closed/significant damage (1)



1:67,000



1 inch = 1.06 miles