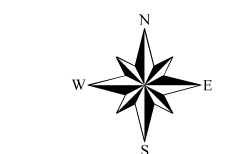


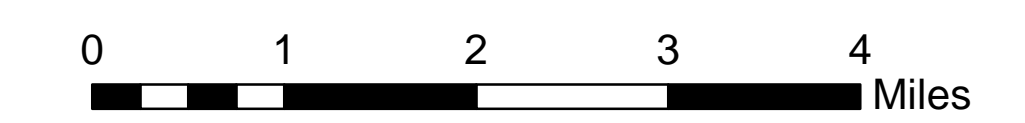
# Assessment Map Roads & Recreation Sites

May 20, 2017 0700

Branch One  
Division Zone 3  
Ava Ranger District  
Mark Twain National Forest



1:63,360



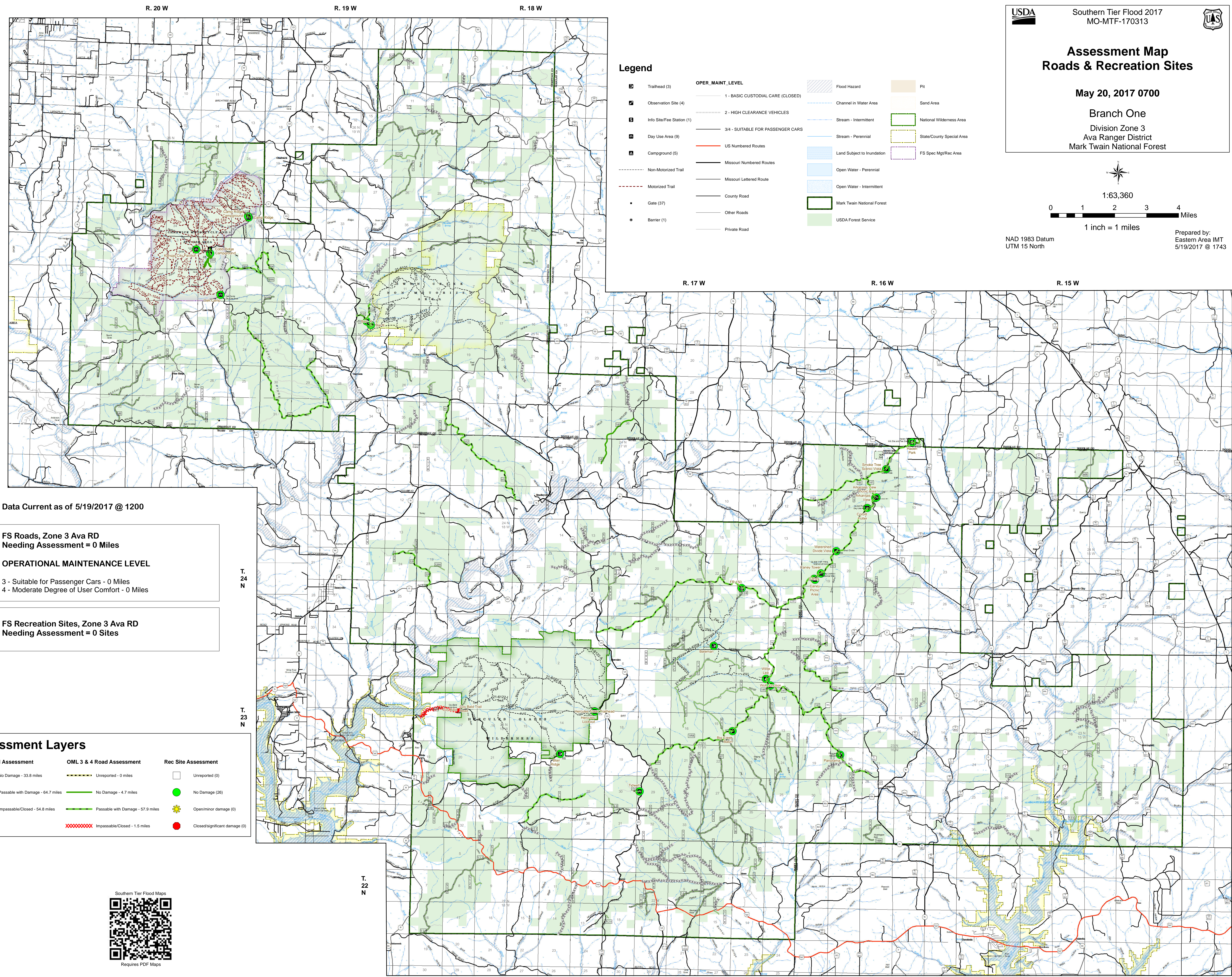
1 inch = 1 miles

NAD 1983 Datum  
UTM 15 North

Prepared by:  
Eastern Area IMT  
5/19/2017 @ 1743

## Legend

- |                           |                                   |                            |                           |
|---------------------------|-----------------------------------|----------------------------|---------------------------|
| Trailhead (3)             | <b>OPER. MAINT. LEVEL</b>         | Flood Hazard               | Pit                       |
| Observation Site (4)      | 1 - BASIC CUSTODIAL CARE (CLOSED) | Channel in Water Area      | Sand Area                 |
| Info Site/Fee Station (1) | 2 - HIGH CLEARANCE VEHICLES       | Stream - Intermittent      | National Wilderness Area  |
| Day Use Area (9)          | 3/4 - SUITABLE FOR PASSENGER CARS | Stream - Perennial         | State/County Special Area |
| Campground (5)            | US Numbered Routes                | Land Subject to Inundation | FS Spec Mgr/Rec Area      |
| Non-Motorized Trail       | Missouri Numbered Routes          | Open Water - Perennial     |                           |
| Motorized Trail           | Missouri Lettered Route           | Open Water - Intermittent  |                           |
| Gate (37)                 | County Road                       | Mark Twain National Forest |                           |
| Barrier (1)               | Other Roads                       | USDA Forest Service        |                           |
|                           | Private Road                      |                            |                           |



Data Current as of 5/19/2017 @ 1200

**FS Roads, Zone 3 Ava RD  
Needing Assessment = 0 Miles**

**OPERATIONAL MAINTENANCE LEVEL**

3 - Suitable for Passenger Cars - 0 Miles  
4 - Moderate Degree of User Comfort - 0 Miles

**FS Recreation Sites, Zone 3 Ava RD  
Needing Assessment = 0 Sites**

### Assessment Layers

<b>OML 2 Road Assessment</b>	<b>OML 3 &amp; 4 Road Assessment</b>	<b>Rec Site Assessment</b>
No Damage - 33.8 miles	Unreported - 0 miles	Unreported (0)
Passable with Damage - 64.7 miles	No Damage - 4.7 miles	No Damage (26)
Impassable/Closed - 54.6 miles	Passable with Damage - 57.9 miles	Open/minor damage (0)
Impassable/Closed - 1.5 miles		Closed/significant damage (0)



Requires PDF Maps