



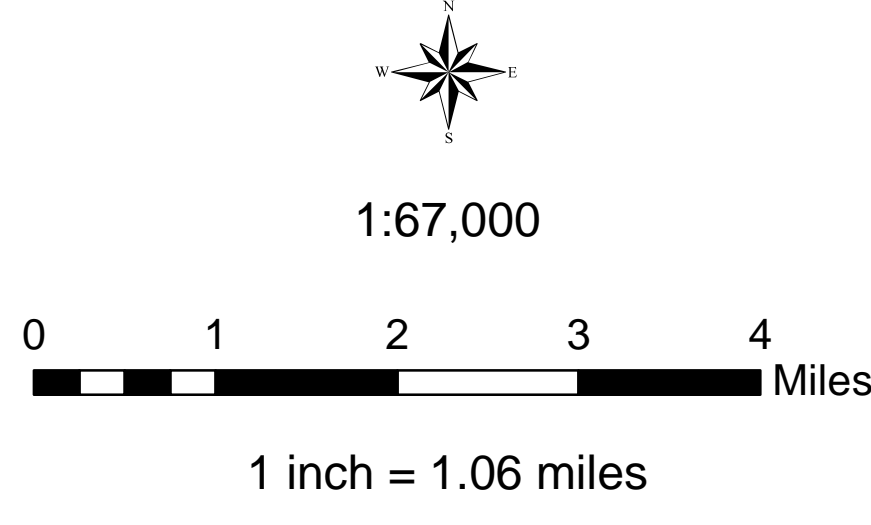
Requires PDF Maps

USDA Southern Tier Flood 2017 MO-MTF-170313

**Assessment Map
Roads & Recreation Sites**

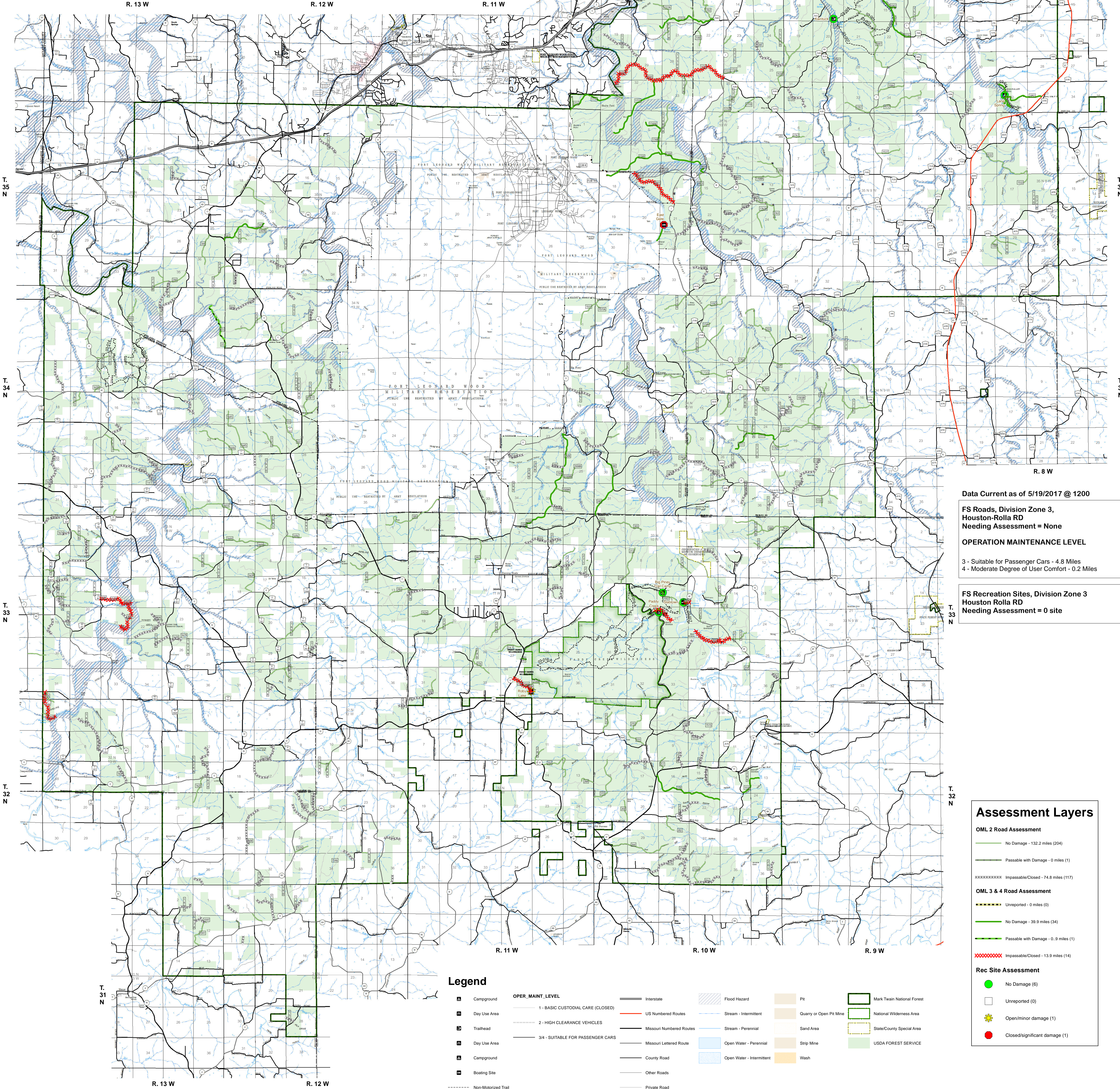
May 20, 2017 0700

Branch One
Division Zone Three
Houston/Rolla Ranger District
Mark Twain National Forest



NAD 1983 Datum
UTM 15 North

Prepared by:
Eastern Area IMT
5/19/2017 @ 1745



Data Current as of 5/19/2017 @ 1200

FS Roads, Division Zone 3,
Houston-Rolla RD
Needing Assessment = None

OPERATION MAINTENANCE LEVEL

- 3 - Suitable for Passenger Cars - 4.8 Miles
- 4 - Moderate Degree of User Comfort - 0.2 Miles

FS Recreation Sites, Division Zone 3
Houston Rolla RD
Needing Assessment = 0 site

Assessment Layers

- OML 2 Road Assessment**
- No Damage - 132.2 miles (204)
 - Passable with Damage - 0 miles (1)
 - XXXXXXXXXX Impassable/Closed - 74.8 miles (117)
- OML 3 & 4 Road Assessment**
- Unreported - 0 miles (0)
 - No Damage - 39.9 miles (34)
 - Passable with Damage - 0.9 miles (1)
 - XXXXXXXXXX Impassable/Closed - 13.9 miles (14)
- Rec Site Assessment**
- No Damage (6)
 - Unreported (0)
 - Open/Minor damage (1)
 - Closed/significant damage (1)

Legend

- | | | | | | |
|---------------------|-----------------------------------|--------------------------|---------------------------|-------------------------|----------------------------|
| Campground | OPER. MAINT. LEVEL | Interstate | Flood Hazard | Pit | Mark Twain National Forest |
| Day Use Area | 1 - BASIC CUSTODIAL CARE (CLOSED) | US Numbered Routes | Stream - Intermittent | Quarry or Open Pit Mine | National Wilderness Area |
| Trailhead | 2 - HIGH CLEARANCE VEHICLES | Missouri Numbered Routes | Stream - Perennial | Sand Area | State/County Special Area |
| Day Use Area | 3/4 - SUITABLE FOR PASSENGER CARS | Missouri Lettered Routes | Open Water - Perennial | Strip Mine | USDA FOREST SERVICE |
| Campground | | County Road | Open Water - Intermittent | Wash | |
| Boasting Site | | Other Roads | | | |
| Non-Motorized Trail | | Private Road | | | |
| Gate | | Railroad | | | |
| Barrier | | | | | |