

R 12 W

R 11 W

R 10 W

R 9 W

T 27 N

T 27 N

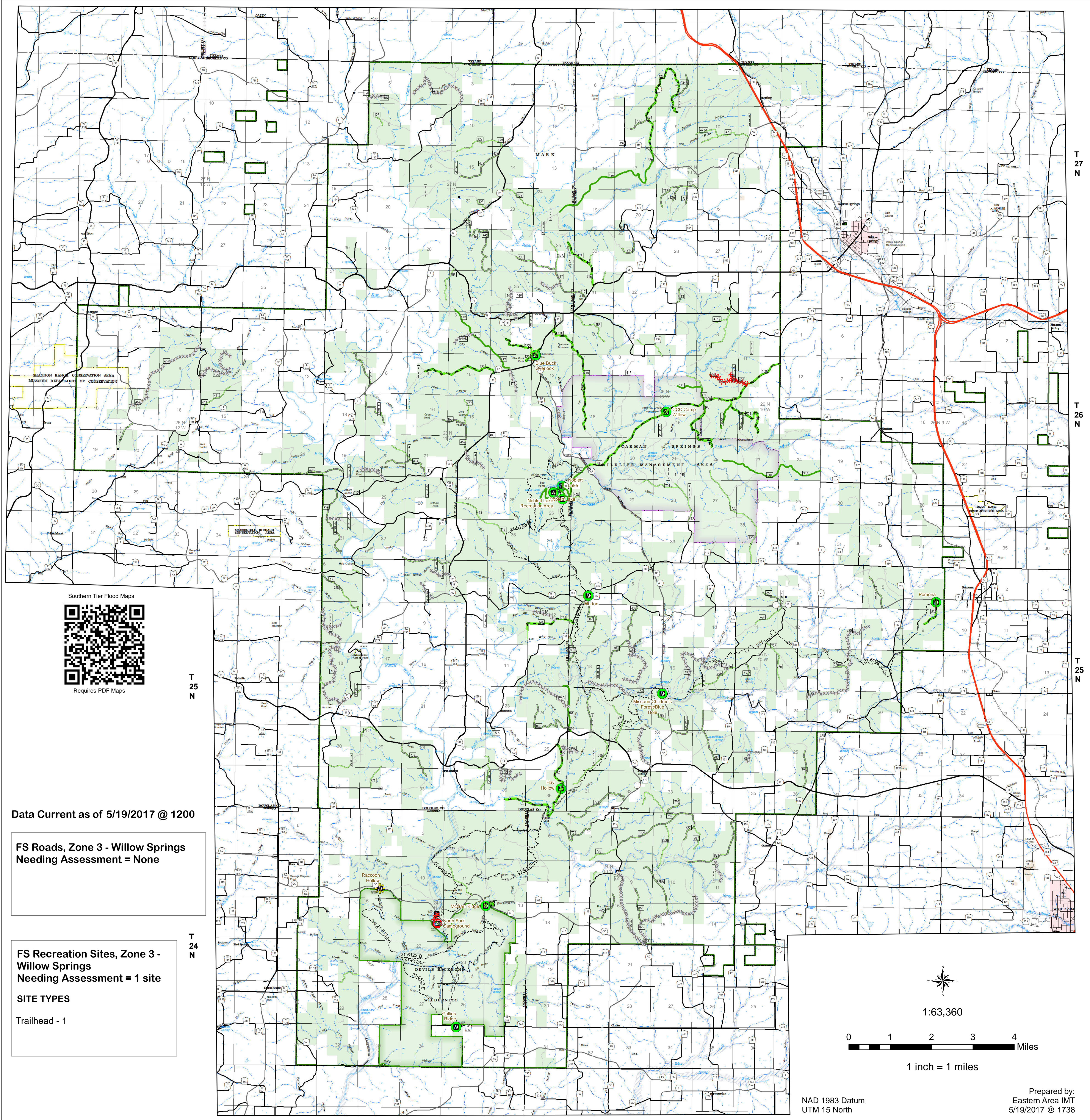
T 26 N

T 26 N

T 25 N

T 25 N

T 24 N



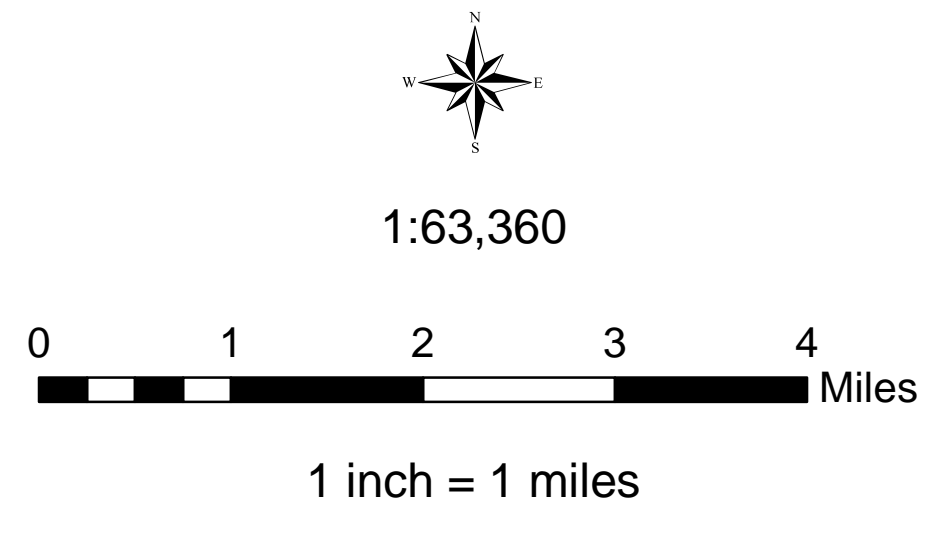
Data Current as of 5/19/2017 @ 1200

FS Roads, Zone 3 - Willow Springs
Needing Assessment = None

FS Recreation Sites, Zone 3 -
Willow Springs
Needing Assessment = 1 site

SITE TYPES

Trailhead - 1



NAD 1983 Datum
UTM 15 North

Prepared by:
Eastern Area IMT
5/19/2017 @ 1738

USDA Southern Tier Flood 2017 MO-MTF-170313

**Assessment Map
Roads & Recreation Sites**
May 20, 2017 0700

Branch One

Division Zone 3
Willow Springs Ranger District
Mark Twain National Forest

Assessment Layers

OML 2 Road Assessment	OML 3 & 4 Road Assessment	Rec Site Assessment
No Damage - 37.1 miles	Unreported - 0 miles	Unreported (0)
Passable with Damage - 42.87 miles	No Damage - 14.91 miles	No Damage (11)
Impassible/Closed - 36.0 miles	Passable with Damage - 25.7 miles	Open/minor damage (1)
	Impassible/Closed - 1.8 miles	Closed/significant damage (1)

Legend

Campground (2)	Non-Motorized Trail	US Numbered Routes	Flood Hazard	Sand Area
Trailhead (9)	Gate (31)	Missouri Numbered Routes	Stream - Intermittent	Strip Mine
Observation Site (1)	Barrier (5)	Missouri Lettered Route	Stream - Perennial	Mark Twain National Forest
Interpretive Site (Minor) (1)	OPER_MAINT_LEVEL	County Road	Waterfall	National Wilderness Area
Day Use Area (1)	1 - BASIC CUSTODIAL CARE (CLOSED)	Other Roads	Open Water - Perennial	State/County Special Area
Campground (1)	2 - HIGH CLEARANCE VEHICLES	Private Road	Open Water - Intermittent	FS Spec Mgt/Rec Area
	3/4 - SUITABLE FOR PASSENGER CARS	Railroad	Quarry or Open Pit Mine	USDA Forest Service