



R. 3 E R. 4 E R. 5 E R. 6 E R. 7 E

T. 28 N

T. 27 N

T. 26 N

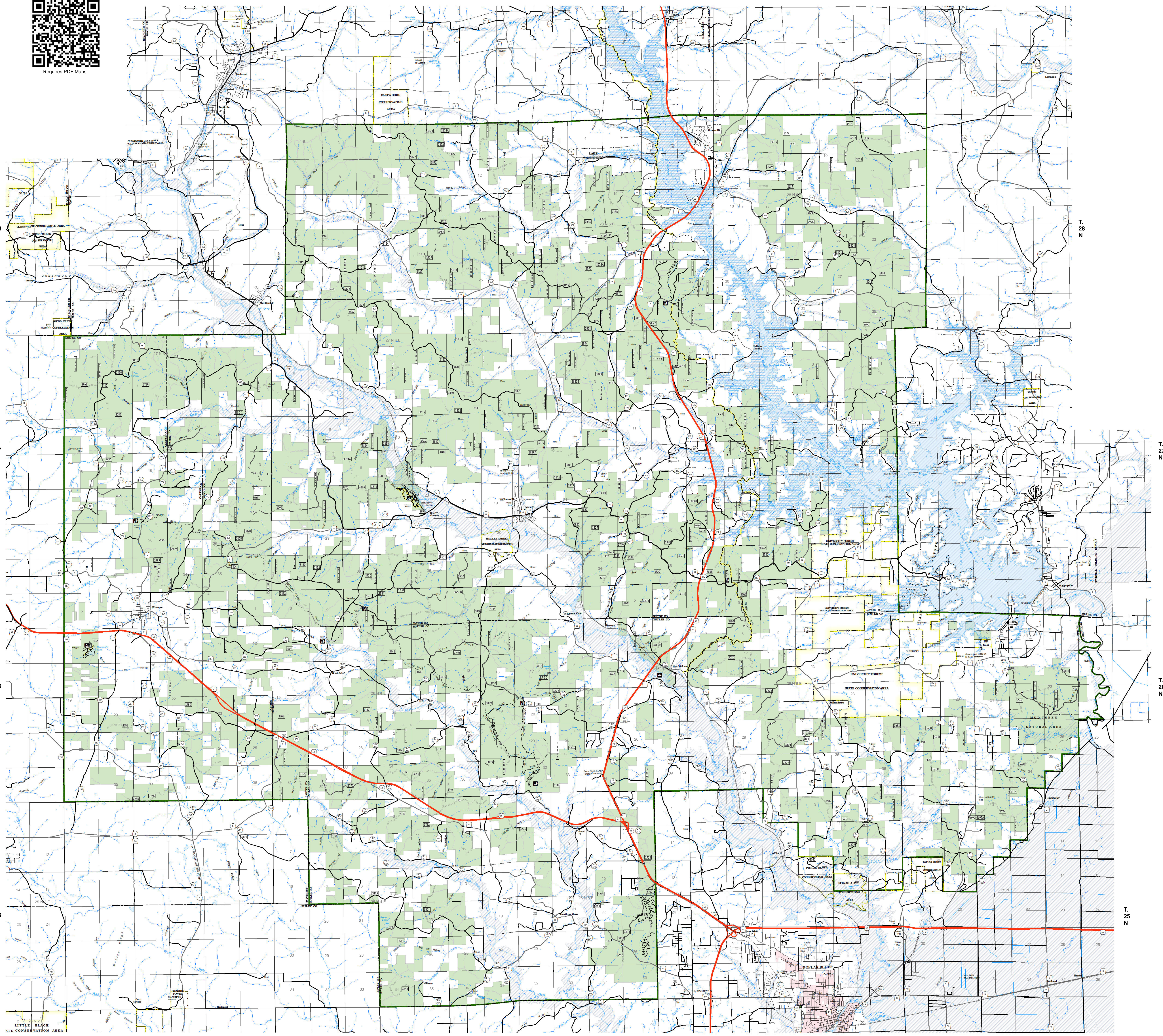
T. 25 N

T. 28 N

T. 27 N

T. 26 N

T. 25 N



R. 3 E R. 4 E R. 5 E R. 6 E R. 7 E

USDA Southern Tier Flood 2017
MO-MTF-170313

Assessment Map Trails

May 20, 2017 0700

Branch Two
Division Black River
Poplar Bluff Ranger District / Mark Twain National Forest



Legend

Campground (2)	OPER_MAINT_LEVEL	Flood Hazard	Sand Area
Trailhead (7)	1 - BASIC CUSTODIAL CARE (CLOSED)	Canal/Aque/Ditch	Strip Mine
Boating Site (1)	2 - HIGH CLEARANCE VEHICLES	Stream - Intermittent	Mark Twain National Forest
Non-Motorized Trail	3/4 - SUITABLE FOR PASSENGER CARS	Stream - Perennial	State/County Special Area
Gate (12)	US Numbered Routes	Land Subject to Inundation	USDA Forest Service
Barrier (12)	Missouri Numbered Routes	Open Water - Perennial	
	Missouri Lettered Route	Open Water - Intermittent	
	County Road		
	Other Roads		
	Private Road		
	Railroad		

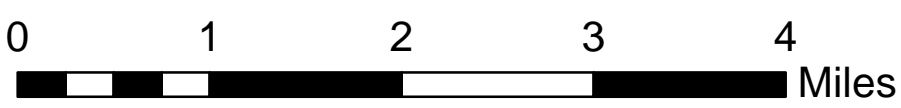
Assessment Layer

Trail Assessment

- Unreported - 0 miles
- No Damage - 41.0 miles
- Passable with Damage - 28.6 miles
- Impassable/Closed - 0 miles

Data Current as of 5/19/2017 @ 1200
FS Trails, Zone Black River, Poplar Bluff RD
Needing Assessment = None

1:63,360



1 inch = 1 miles

NAD 1983 Datum
UTM 15 North

Prepared by:
Eastern Area IMT
5/19/2017 @ 1757