

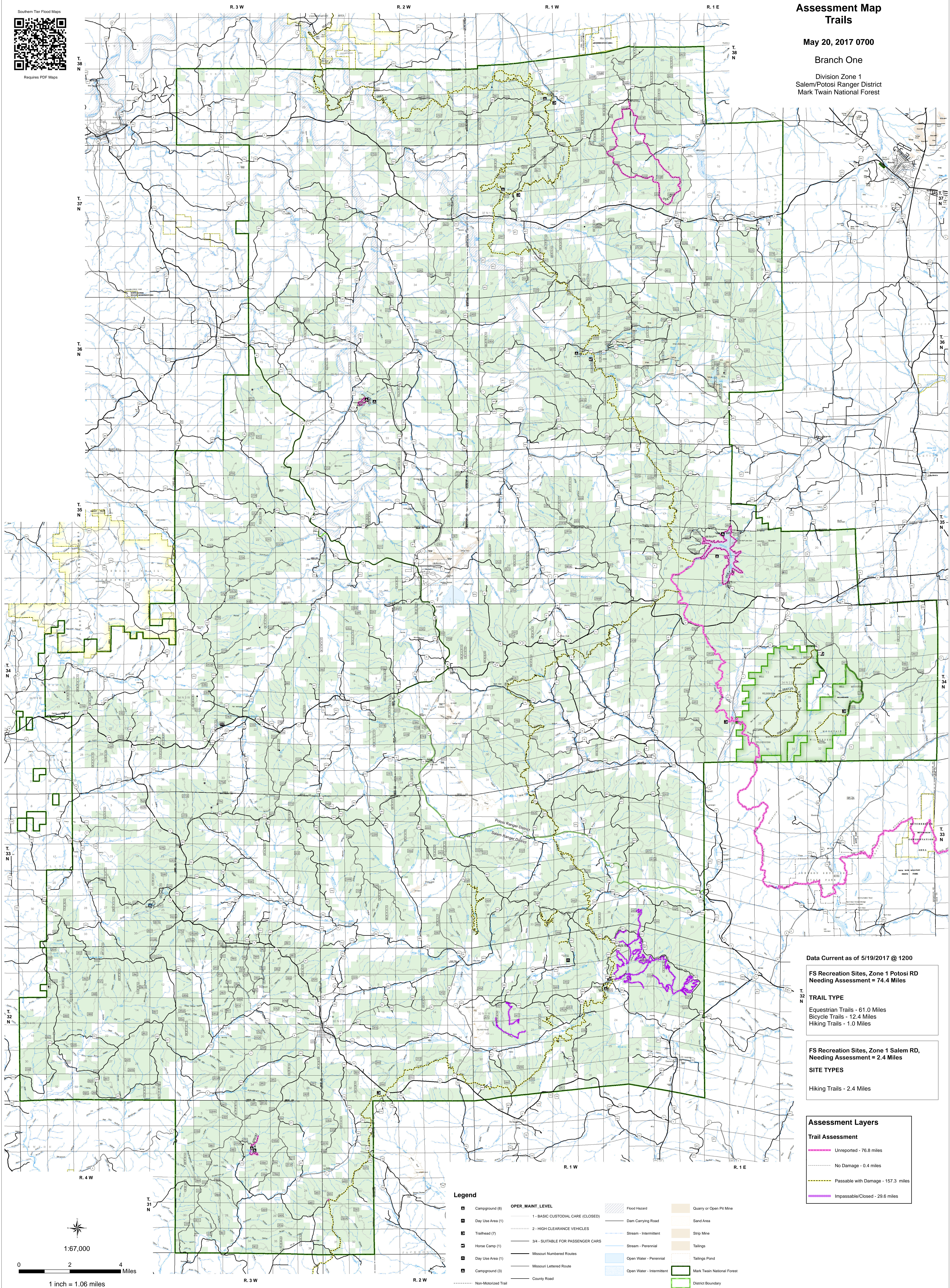


Assessment Map  
Trails

May 20, 2017 0700

Branch One

Division Zone 1  
Salem/Potosi Ranger District  
Mark Twain National Forest



Data Current as of 5/19/2017 @ 1200

FS Recreation Sites, Zone 1 Potosi RD  
Needing Assessment = 74.4 Miles

TRAIL TYPE

Equestrian Trails - 61.0 Miles  
Bicycle Trails - 12.4 Miles  
Hiking Trails - 1.0 Miles

FS Recreation Sites, Zone 1 Salem RD,  
Needing Assessment = 2.4 Miles

SITE TYPES

Hiking Trails - 2.4 Miles

Assessment Layers

Trail Assessment

Unreported - 76.8 miles  
No Damage - 0.4 miles  
Passable with Damage - 157.3 miles  
Impassable/Closed - 29.6 miles

Legend

- |                                   |                  |               |                |                  |                |                     |      |         |
|-----------------------------------|------------------|---------------|----------------|------------------|----------------|---------------------|------|---------|
| Campground (8)                    | Day Use Area (1) | Trailhead (7) | Horse Camp (1) | Day Use Area (1) | Campground (3) | Non-Motorized Trail | Gate | Barrier |
| <b>OPER_MAINT_LEVEL</b>           |                  |               |                |                  |                |                     |      |         |
| 1 - BASIC CUSTODIAL CARE (CLOSED) |                  |               |                |                  |                |                     |      |         |
| 2 - HIGH CLEARANCE VEHICLES       |                  |               |                |                  |                |                     |      |         |
| 3/4 - SUITABLE FOR PASSENGER CARS |                  |               |                |                  |                |                     |      |         |
| Missouri Numbered Routes          |                  |               |                |                  |                |                     |      |         |
| Missouri Lettered Route           |                  |               |                |                  |                |                     |      |         |
| County Road                       |                  |               |                |                  |                |                     |      |         |
| Other Roads                       |                  |               |                |                  |                |                     |      |         |
| Private Road                      |                  |               |                |                  |                |                     |      |         |
| Railroad                          |                  |               |                |                  |                |                     |      |         |
| Flood Hazard                      |                  |               |                |                  |                |                     |      |         |
| Dam Carrying Road                 |                  |               |                |                  |                |                     |      |         |
| Stream - Intermittent             |                  |               |                |                  |                |                     |      |         |
| Stream - Perennial                |                  |               |                |                  |                |                     |      |         |
| Open Water - Perennial            |                  |               |                |                  |                |                     |      |         |
| Open Water - Intermittent         |                  |               |                |                  |                |                     |      |         |
| Quarry or Open Pit Mine           |                  |               |                |                  |                |                     |      |         |
| Sand Area                         |                  |               |                |                  |                |                     |      |         |
| Strip Mine                        |                  |               |                |                  |                |                     |      |         |
| Tailings                          |                  |               |                |                  |                |                     |      |         |
| Tailings Pond                     |                  |               |                |                  |                |                     |      |         |
| Mark Twain National Forest        |                  |               |                |                  |                |                     |      |         |
| District Boundary                 |                  |               |                |                  |                |                     |      |         |
| USDA FOREST SERVICE               |                  |               |                |                  |                |                     |      |         |



1:67,000

0 2 4 Miles

1 inch = 1.06 miles