

R 12 W

R 11 W

R 10 W

R 9 W

T 27 N

T 27 N

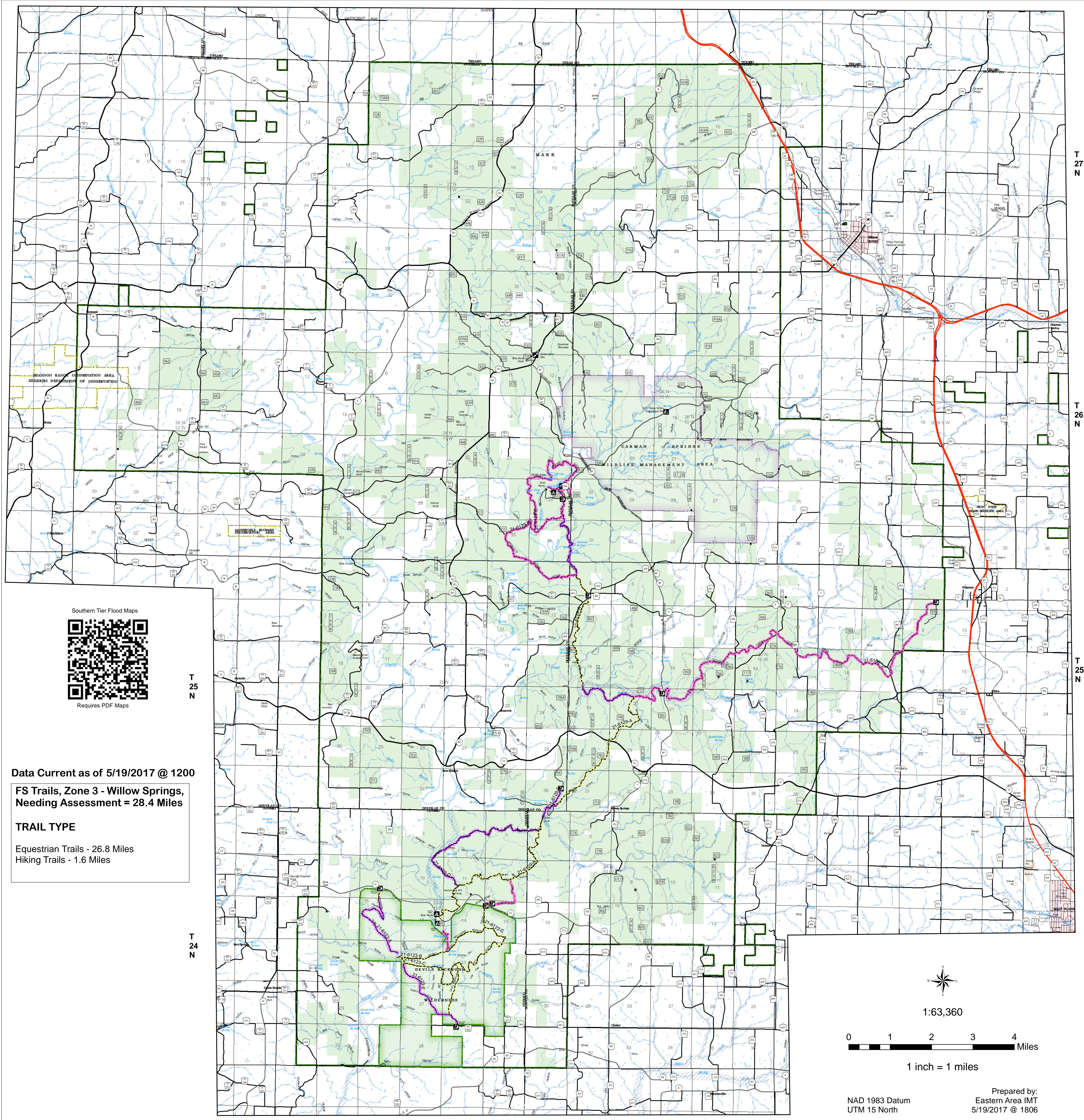
T 26 N

T 26 N

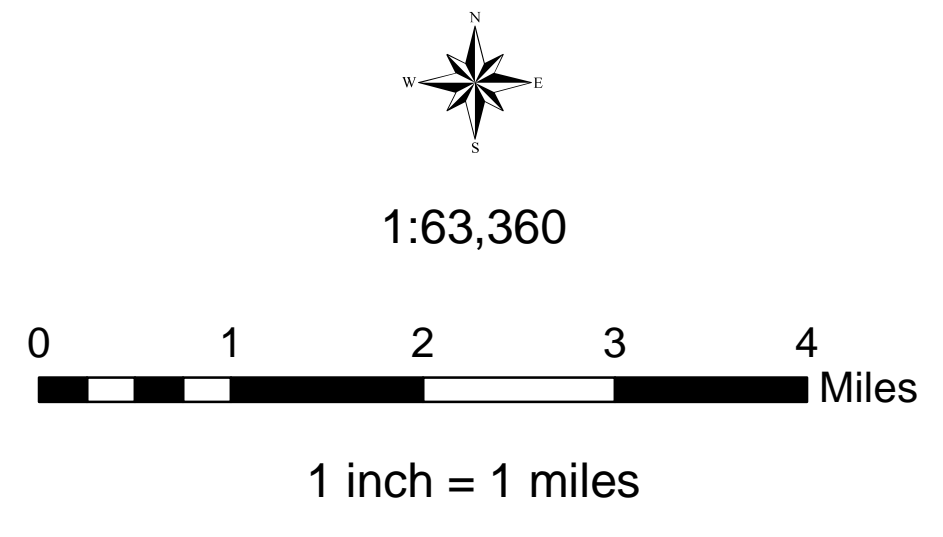
T 25 N

T 25 N

T 24 N



Data Current as of 5/19/2017 @ 1200
FS Trails, Zone 3 - Willow Springs, Needing Assessment = 28.4 Miles
TRAIL TYPE
 Equestrian Trails - 26.8 Miles
 Hiking Trails - 1.6 Miles



Prepared by:
 Eastern Area IMT
 5/19/2017 @ 1806
 NAD 1983 Datum
 UTM 15 North

USDA Southern Tier Flood 2017 MO-MTF-170313 UAS

Assessment Map Trails

May 20, 2017 0700

Branch One
 Division Zone 3
 Willow Springs Ranger District
 Mark Twain National Forest

Assessment Layers

Trail Assessment	
	Unreported - 28.4 miles
	No Damage - 0.75 miles
	Passable with Damage - 33.4 miles
	Impassable/Closed - 26.8 miles

Legend

	Campground (2)		Non-Motorized Trail		US Numbered Routes
	Trailhead (9)		Gate (31)		Missouri Numbered Routes
	Observation Site (1)		Barrier (5)		Missouri Lettered Route
	Interpretive Site (Minor) (1)	OPER. MAINT. LEVEL			County Road
	Day Use Area (1)		1 - BASIC CUSTODIAL CARE (CLOSED)		Other Roads
	Campground (1)		2 - HIGH CLEARANCE VEHICLES		Private Road
			3/4 - SUITABLE FOR PASSENGER CARS		Railroad

	Flood Hazard		Mark Twain National Forest
	Stream - Intermittent		National Wilderness Area
	Stream - Perennial		State/County Special Area
	Waterfall		FS Spec Mgt/Rec Area
	Open Water - Perennial		USDA Forest Service
	Open Water - Intermittent		
	Quarry or Open Pit Mine		
	Sand Area		
	Strip Mine		