



Southern Tier Flood 2017
MO-MTF-170313



Assessment Map Roads & Recreation Sites

May 21, 2017 0700

Branch One
Division Zone 1
Fredericktown Ranger District
Mark Twain National Forest

Data Current as of 5/20/2017 @ 1430

FS Roads, Zone 1 - Fredericktown RD
Needing Assessment = None

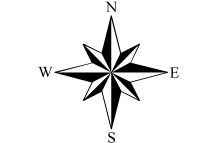
FS Recreation Sites, Zone 1 - Fredericktown RD
Needing Assessment = None

Assessment Layers

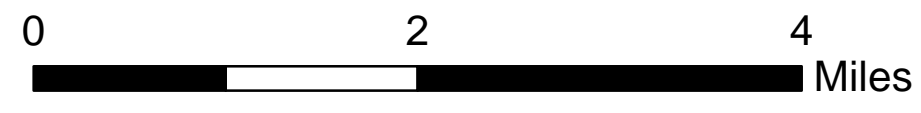
OML 2 Road Assessment	OML 3 & 4 Road Assessment	Rec Site Assessment
No Damage - 0.6 miles	Unreported - 0.0 miles	Unreported (0)
Passable with Damage - 3.3 miles	No Damage - 12.7 miles	No Damage (1)
Impassable/Closed - 0 miles	Passable with Damage - 11.4 miles	Open/minor damage (3)
	Impassable/Closed - 0 miles	Closed/significant damage (0)



Requires PDF Maps



1:63,360



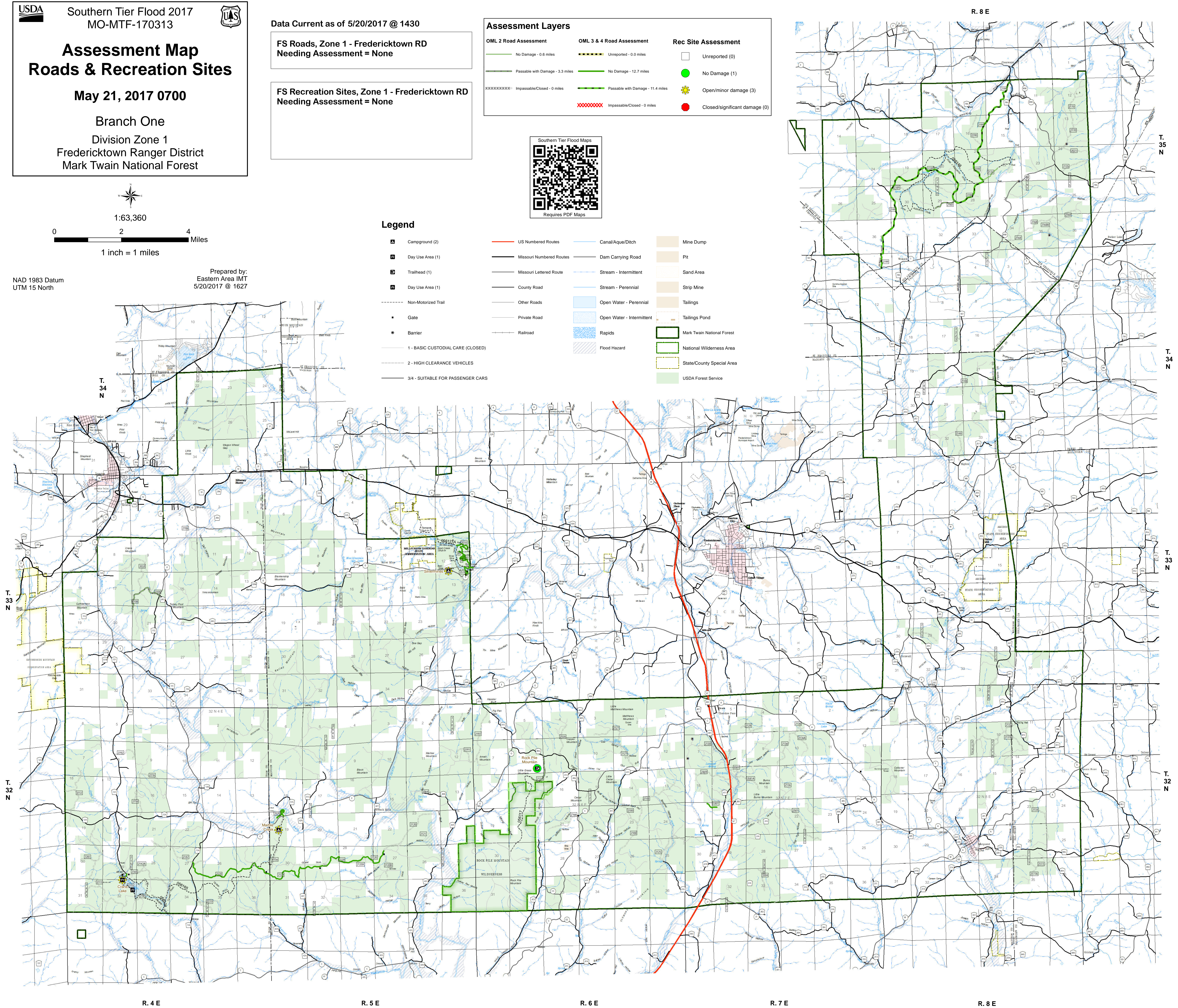
1 inch = 1 miles

NAD 1983 Datum
UTM 15 North

Prepared by:
Eastern Area IMT
5/20/2017 @ 1627

Legend

Campground (2)	US Numbered Routes	Mine Dump
Day Use Area (1)	Missouri Numbered Routes	Pit
Trailhead (1)	Missouri Lettered Route	Sand Area
Day Use Area (1)	County Road	Strip Mine
Non-Motorized Trail	Other Roads	Tailings
Gate	Private Road	Tailings Pond
Barrier	Railroad	Mark Twain National Forest
1-BASIC CUSTODIAL CARE (CLOSED)	Canal/Aque/Ditch	National Wilderness Area
2-HIGH CLEARANCE VEHICLES	Dam Carrying Road	State/County Special Area
34-SUITABLE FOR PASSENGER CARS	Stream - Intermittent	USDA Forest Service
	Stream - Perennial	
	Open Water - Perennial	
	Open Water - Intermittent	
	Rapids	
	Flood Hazard	



R. 4 E

R. 5 E

R. 6 E

R. 7 E

R. 8 E

T. 34 N

T. 33 N

T. 32 N

T. 35 N

T. 34 N

T. 33 N

T. 32 N