

Assessment Map Roads & Recreation Sites

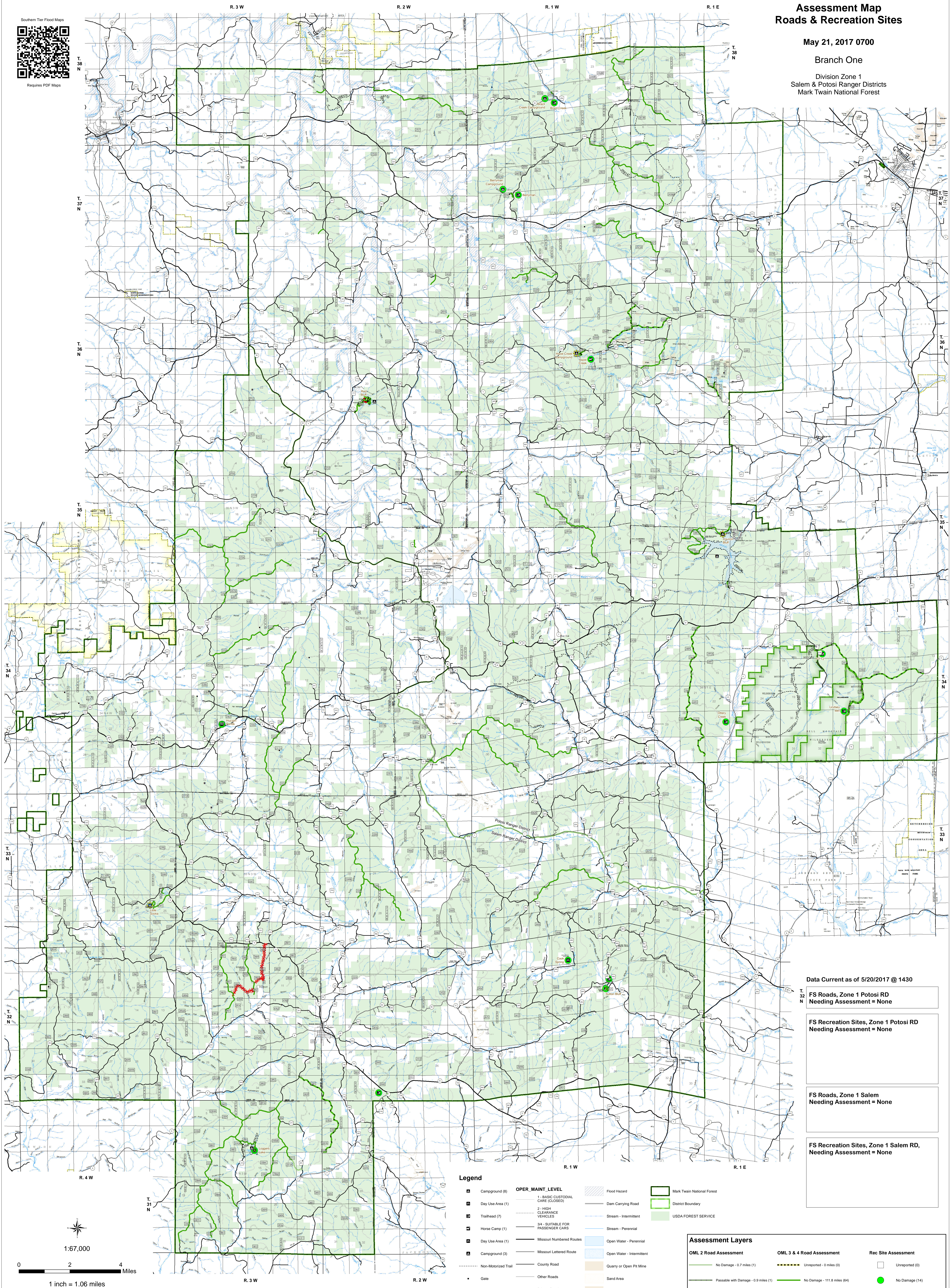
May 21, 2017 0700

Branch One

Division Zone 1
Salem & Potosi Ranger Districts
Mark Twain National Forest



Requires PDF Maps



Data Current as of 5/20/2017 @ 1430

FS Roads, Zone 1 Potosi RD
Needing Assessment = None

FS Recreation Sites, Zone 1 Potosi RD
Needing Assessment = None

FS Roads, Zone 1 Salem
Needing Assessment = None

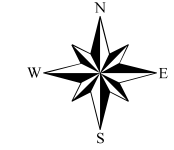
FS Recreation Sites, Zone 1 Salem RD,
Needing Assessment = None

Legend

- | | | | | | | | |
|--|---------------------|--|-----------------------------------|--|---------------------------|--|----------------------------|
| | Campground (8) | | 1 - BASIC CUSTODIAL CARE (CLOSED) | | Flood Hazard | | Mark Twain National Forest |
| | Day Use Area (1) | | 2 - HIGH CLEARANCE VEHICLES | | Dam Carrying Road | | District Boundary |
| | Trailhead (7) | | 3/4 - SUITABLE FOR PASSENGER CARS | | Stream - Intermittent | | USDA FOREST SERVICE |
| | Horse Camp (1) | | Missouri Numbered Routes | | Stream - Perennial | | |
| | Day Use Area (1) | | Missouri Lettered Route | | Open Water - Perennial | | |
| | Campground (3) | | County Road | | Open Water - Intermittent | | |
| | Non-Motorized Trail | | Other Roads | | Quarry or Open Pit Mine | | |
| | Gate | | Private Road | | Sand Area | | |
| | Barrier | | Railroad | | Strip Mine | | |
| | | | | | Tailings | | |
| | | | | | Tailings Pond | | |

Assessment Layers

- | | | | | | |
|--|--------------------------------------|--|--|--|-----------------------|
| | No Damage - 0.7 miles (1) | | Unreported - 0 miles (0) | | Unreported (0) |
| | Passable with Damage - 0.9 miles (1) | | No Damage - 111.8 miles (64) | | No Damage (14) |
| | Impassible/Closed - 1.1 miles (2) | | Passable with Damage - 26.3 miles (16) | | Open/minor damage (3) |
| | Impassible/Closed - 3.5 miles (2) | | Closed/significant damage (1) | | |



1:67,000

