



Southern Tier Flood 2017  
MO-MTF-170313



# Assessment Map Trails

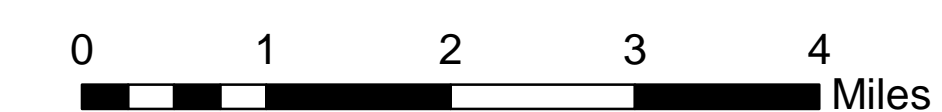
May 21, 2017 0700

Branch Two

Divisions Eleven Point and Current River  
Eleven Point/Doniphan Ranger District  
Mark Twain National Forest



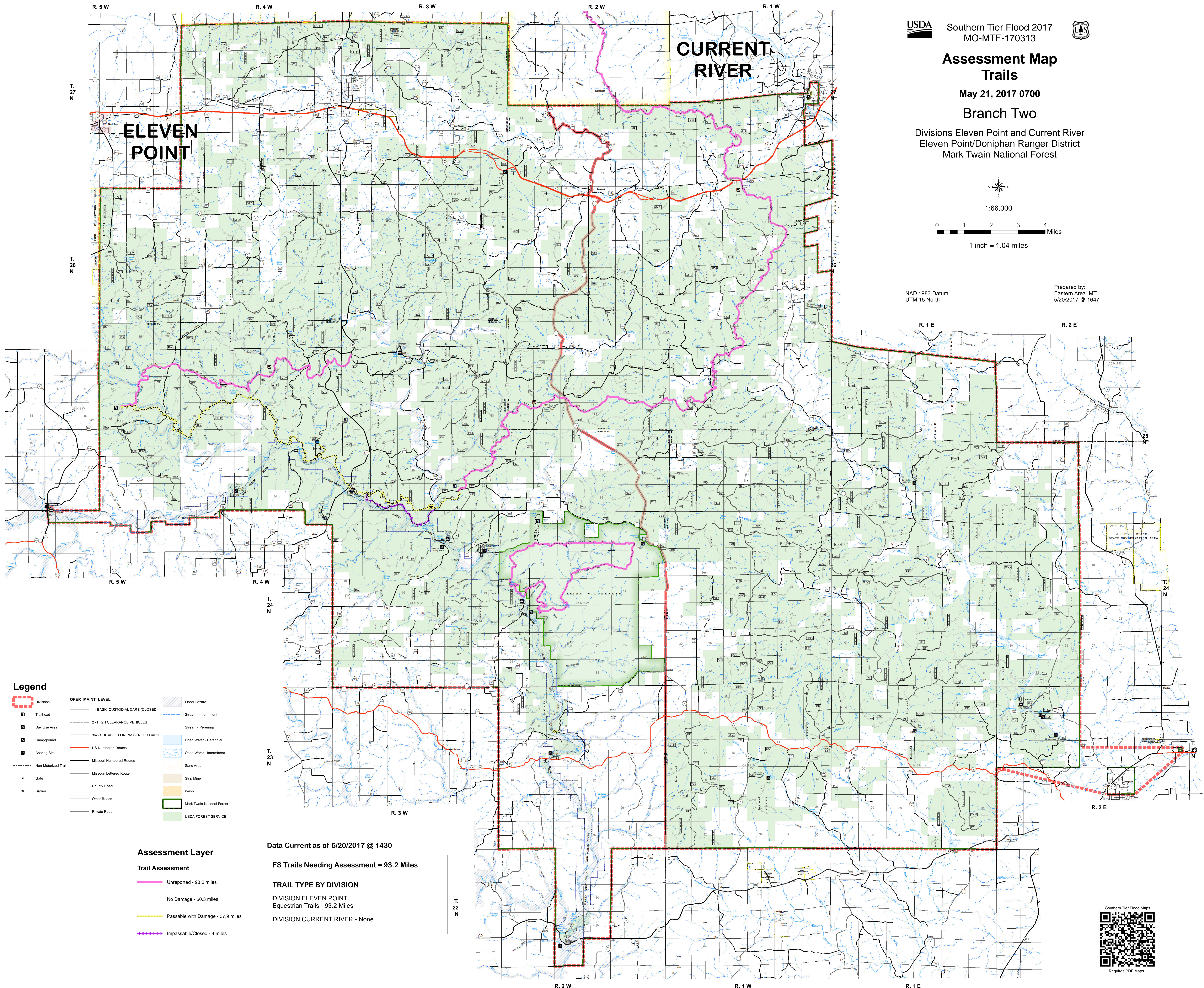
1:66,000



1 inch = 1.04 miles

NAD 1983 Datum  
UTM 15 North

Prepared by:  
Eastern Area IMT  
5/20/2017 @ 1647



### Legend

- |                     |                                   |                            |
|---------------------|-----------------------------------|----------------------------|
| Divisions           | <b>OPER. MAINT. LEVEL</b>         | Flood Hazard               |
| Trailhead           | 1 - BASIC CUSTODIAL CARE (CLOSED) | Stream - Intermittent      |
| Day Use Area        | 2 - HIGH CLEARANCE VEHICLES       | Stream - Perennial         |
| Campground          | 3/4 - SUITABLE FOR PASSENGER CARS | Open Water - Perennial     |
| Boating Site        | US Numbered Routes                | Open Water - Intermittent  |
| Non-Motorized Trail | Missouri Numbered Routes          | Sand Area                  |
| Gate                | Missouri Lettered Route           | Strip Mine                 |
| Barrier             | County Road                       | Wash                       |
|                     | Other Roads                       | Mark Twain National Forest |
|                     | Private Road                      | USDA FOREST SERVICE        |

### Assessment Layer

- Trail Assessment**
- Unreported - 93.2 miles
  - No Damage - 50.3 miles
  - Passable with Damage - 37.9 miles
  - Impassable/Closed - 4 miles

Data Current as of 5/20/2017 @ 1430

FS Trails Needing Assessment = 93.2 Miles

### TRAIL TYPE BY DIVISION

DIVISION ELEVEN POINT  
Equestrian Trails - 93.2 Miles

DIVISION CURRENT RIVER - None

