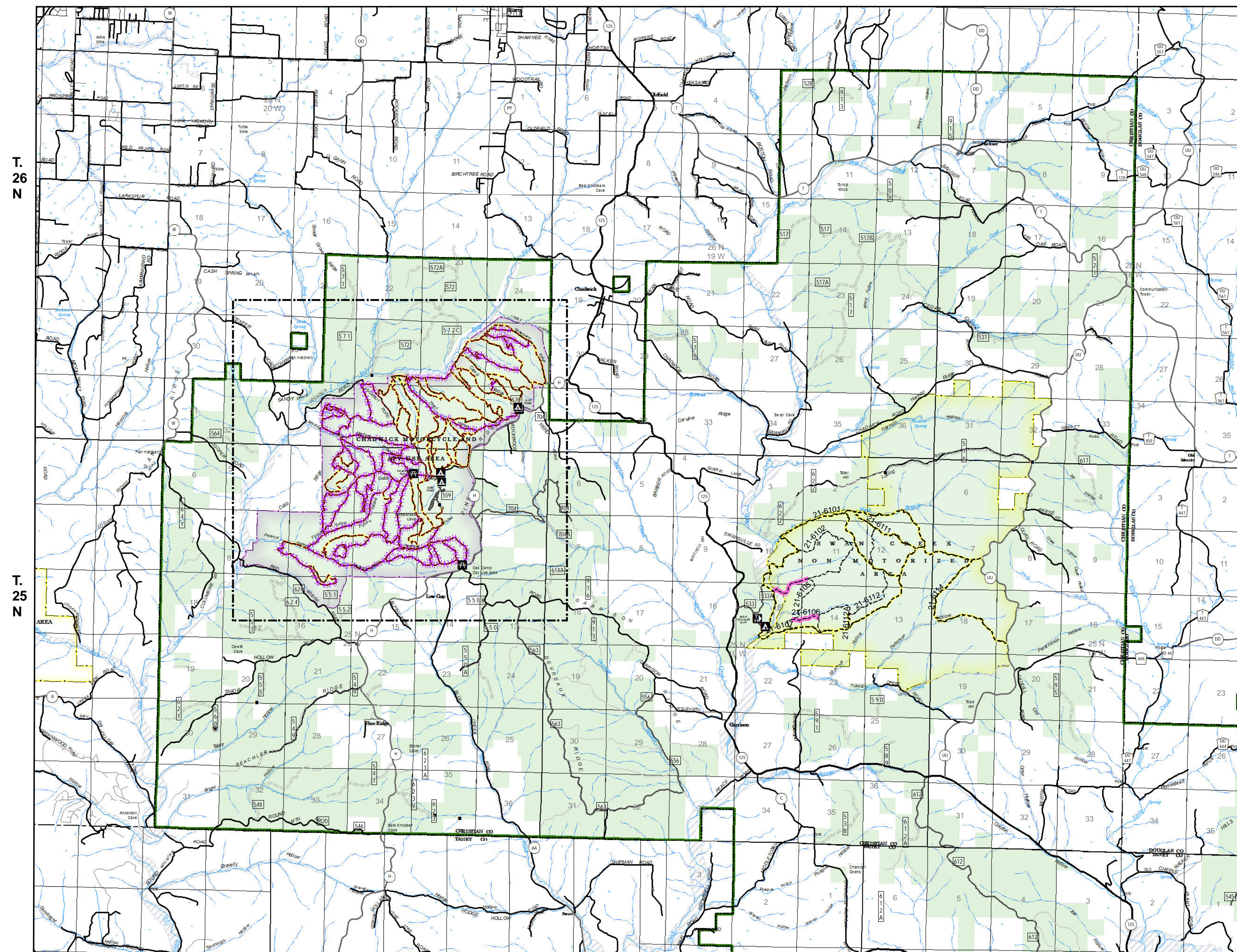


R. 20 W

R. 19 W

R. 18 W



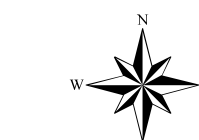
Southern Tier Flood 2017  
MO-MTF-170313



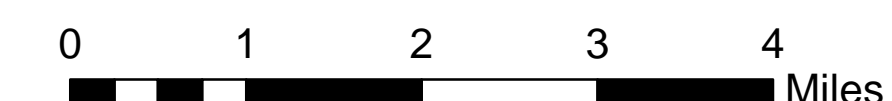
### Assessment Map Trails

May 21, 2017 0700

Branch One  
Division Zone 3  
Ava Ranger District  
Mark Twain National Forest



1:69,238



1 inch = 1.09 miles

NAD 1983 Datum  
UTM 15 North

Prepared by:  
Eastern Area IMT  
5/20/2017 @ 1654

#### Legend

- |                           |                                   |                            |                               |
|---------------------------|-----------------------------------|----------------------------|-------------------------------|
| Campground (2)            | Barrier                           | Flood Hazard               | Pit                           |
| Day Use Area (3)          | 1 - BASIC CUSTODIAL CARE (CLOSED) | Channel in Water Area      | Sand Area                     |
| TRAILHEAD (2)             | 2 - HIGH CLEARANCE VEHICLES       | Stream - Intermittent      | Mark Twain National Forest    |
| Trailhead (3)             | 3/4 - SUITABLE FOR PASSENGER CARS | Stream - Perennial         | National Wilderness Area (2)  |
| Observation Site (4)      | US Numbered Routes                | Land Subject to Inundation | State/County Special Area (5) |
| Info Site/Fee Station (1) | Missouri Numbered Routes          | Open Water - Perennial     | FS Spec Mgr/Rec Area (1)      |
| Day Use Area (9)          | Missouri Lettered Route           | Open Water - Intermittent  | USDA FOREST SERVICE           |
| Campground (5)            | County Road                       |                            |                               |
| Non-Motorized Trail       | Other Roads                       |                            |                               |
| Motorized Trail           | Private Road                      |                            |                               |
| Gate                      |                                   |                            |                               |

T. 26 N

T. 25 N

R. 17 W

R. 16 W

R. 15 W

Data Current as of 5/20/2017 @ 1430

FS Trails, Division Zone 3 Ava RD  
Needing Assessment = 3.8 Miles

#### TRAIL TYPE

Equestrian Trails - 3.8 Miles

#### Trail Assessment Layer

- |                        |                                   |
|------------------------|-----------------------------------|
| Unreported - 3.8 miles | Passable with Damage - 86.7 miles |
| No Damage - 10.0 miles | Impassable/Closed - 36.4 miles    |

T. 24 N

T. 23 N

T. 22 N

#### Chadwick Motorcycle and ATV Use Area

