

Assessment Map Roads & Recreation Sites

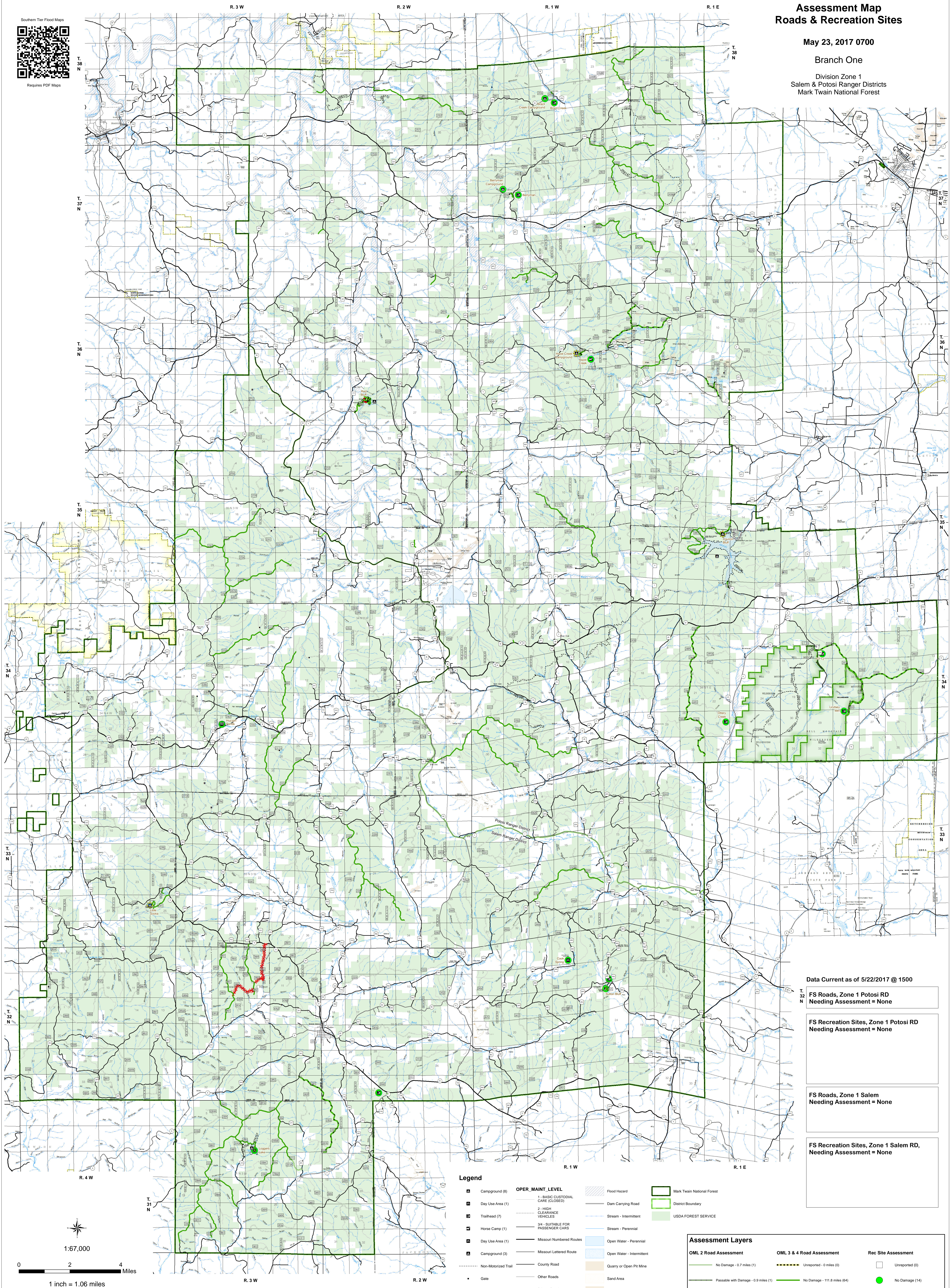
May 23, 2017 0700

Branch One

Division Zone 1
Salem & Potosi Ranger Districts
Mark Twain National Forest



Requires PDF Maps



Data Current as of 5/22/2017 @ 1500

FS Roads, Zone 1 Potosi RD
Needing Assessment = None

FS Recreation Sites, Zone 1 Potosi RD
Needing Assessment = None

FS Roads, Zone 1 Salem
Needing Assessment = None

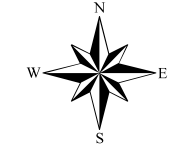
FS Recreation Sites, Zone 1 Salem RD,
Needing Assessment = None

Legend

- | | | | |
|---------------------|-----------------------------------|---------------------------|----------------------------|
| Campground (8) | 1 - BASIC CUSTODIAL CARE CLOSED | Flood Hazard | Mark Twain National Forest |
| Day Use Area (1) | 2 - HIGH CLEARANCE VEHICLES | Dam Carrying Road | District Boundary |
| Trailhead (7) | 3/4 - SUITABLE FOR PASSENGER CARS | Stream - Intermittent | USDA FOREST SERVICE |
| Horse Camp (1) | Missouri Numbered Routes | Stream - Perennial | |
| Day Use Area (1) | Missouri Lettered Route | Open Water - Perennial | |
| Campground (3) | County Road | Open Water - Intermittent | |
| Non-Motorized Trail | Other Roads | Quarry or Open Pit Mine | |
| Gate | Private Road | Sand Area | |
| Barrier | Railroad | Strip Mine | |
| | | Tailings | |
| | | Tailings Pond | |

Assessment Layers

- | | | |
|--------------------------------------|--|----------------------------|
| OML 2 Road Assessment | OML 3 & 4 Road Assessment | Rec Site Assessment |
| No Damage - 0.7 miles (1) | Unreported - 0 miles (0) | Unreported (0) |
| Passable with Damage - 0.9 miles (1) | No Damage - 111.8 miles (64) | No Damage (14) |
| Impassible/Closed - 1.1 miles (2) | Passable with Damage - 26.3 miles (16) | Open/minor damage (3) |
| Impassible/Closed - 3.5 miles (2) | Closed/significant damage (1) | |



1:67,000

