



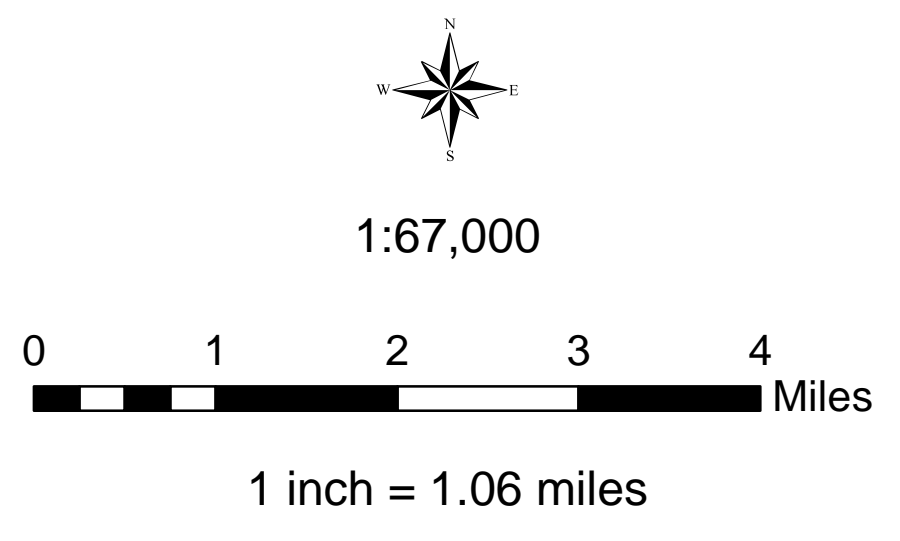
Requires PDF Maps

**USDA** Southern Tier Flood 2017  
MO-MTF-170313

**Assessment Map  
Roads & Recreation Sites**

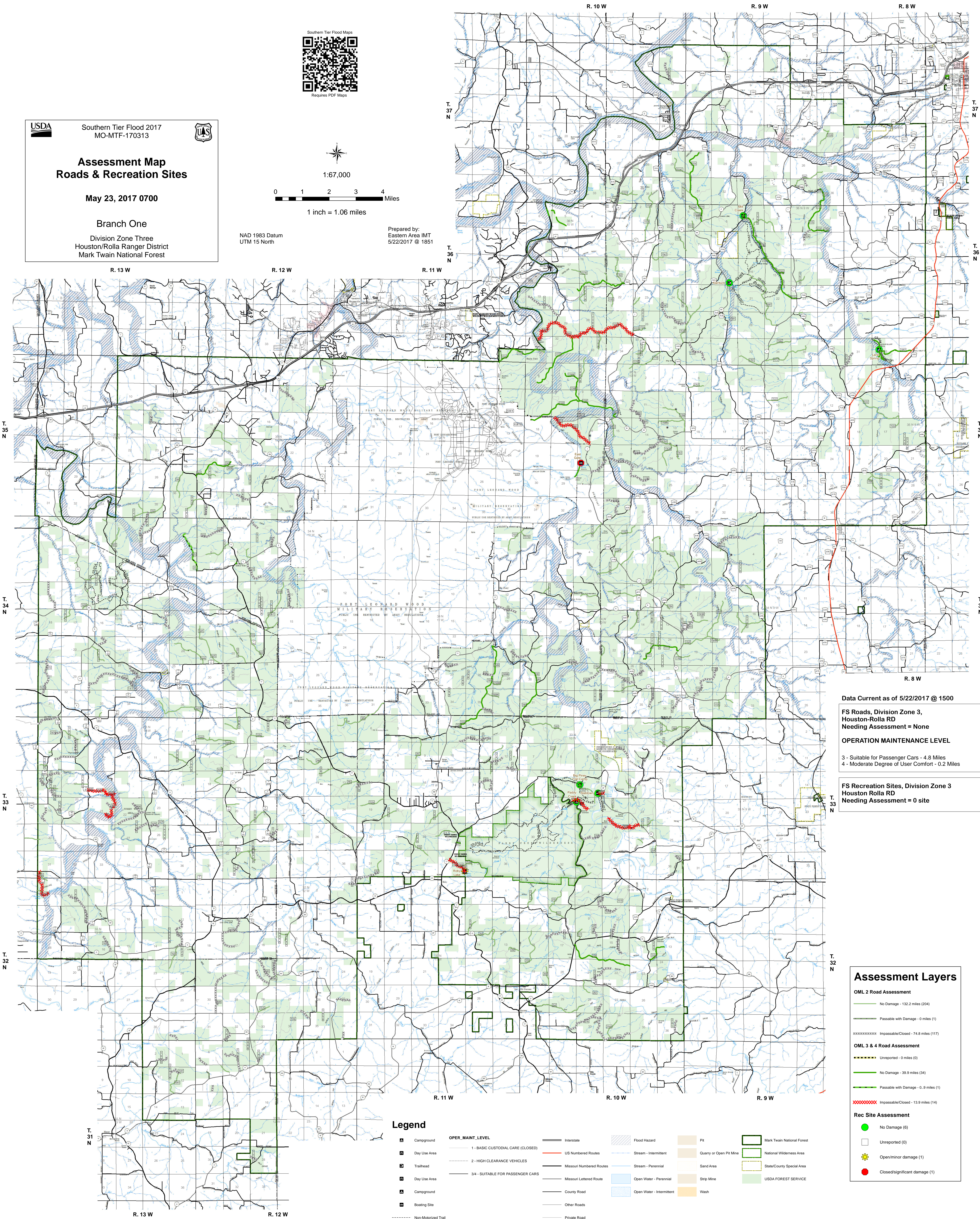
May 23, 2017 0700

Branch One  
Division Zone Three  
Houston/Rolla Ranger District  
Mark Twain National Forest



NAD 1983 Datum  
UTM 15 North

Prepared by:  
Eastern Area IMT  
5/22/2017 @ 1851



Data Current as of 5/22/2017 @ 1500

**FS Roads, Division Zone 3,  
Houston-Rolla RD  
Needing Assessment = None**

**OPERATION MAINTENANCE LEVEL**

3 - Suitable for Passenger Cars - 4.8 Miles  
4 - Moderate Degree of User Comfort - 0.2 Miles

**FS Recreation Sites, Division Zone 3  
Houston Rolla RD  
Needing Assessment = 0 site**

**Assessment Layers**

OML 2 Road Assessment	
—	No Damage - 132.2 miles (204)
—	Passable with Damage - 0 miles (1)
XXXXXXXXXX	Impassable/Closed - 74.8 miles (117)
OML 3 & 4 Road Assessment	
—	Unreported - 0 miles (0)
—	No Damage - 39.9 miles (34)
—	Passable with Damage - 0.9 miles (1)
XXXXXXXXXX	Impassable/Closed - 13.9 miles (14)
Rec Site Assessment	
●	No Damage (6)
□	Unreported (0)
☼	Open/Minor damage (1)
●	Closed/significant damage (1)

**Legend**

OPER. MAINT. LEVEL	ROAD TYPE	TOPOGRAPHY	LAND USE
1 - BASIC CUSTODIAL CARE (CLOSED)	Interstate	Flood Hazard	Pit
2 - HIGH CLEARANCE VEHICLES	US Numbered Routes	Stream - Intermittent	Quarry or Open Pit Mine
3/4 - SUITABLE FOR PASSENGER CARS	Missouri Numbered Routes	Stream - Perennial	Sand Area
	Missouri Lettered Routes	Open Water - Perennial	Strip Mine
	County Road	Open Water - Intermittent	Wash
	Other Roads		
	Private Road		
	Railroad		
	Non-Motorized Trail		
●	Gate		
●	Barrier		

- Campground
- Day Use Area
- Trailhead
- Day Use Area
- Campground
- Boasting Site
- Non-Motorized Trail
- Gate
- Barrier

R. 13 W R. 12 W R. 11 W R. 10 W R. 9 W

T. 31 N T. 32 N T. 33 N T. 34 N T. 35 N T. 36 N T. 37 N