

Assessment Map Trails

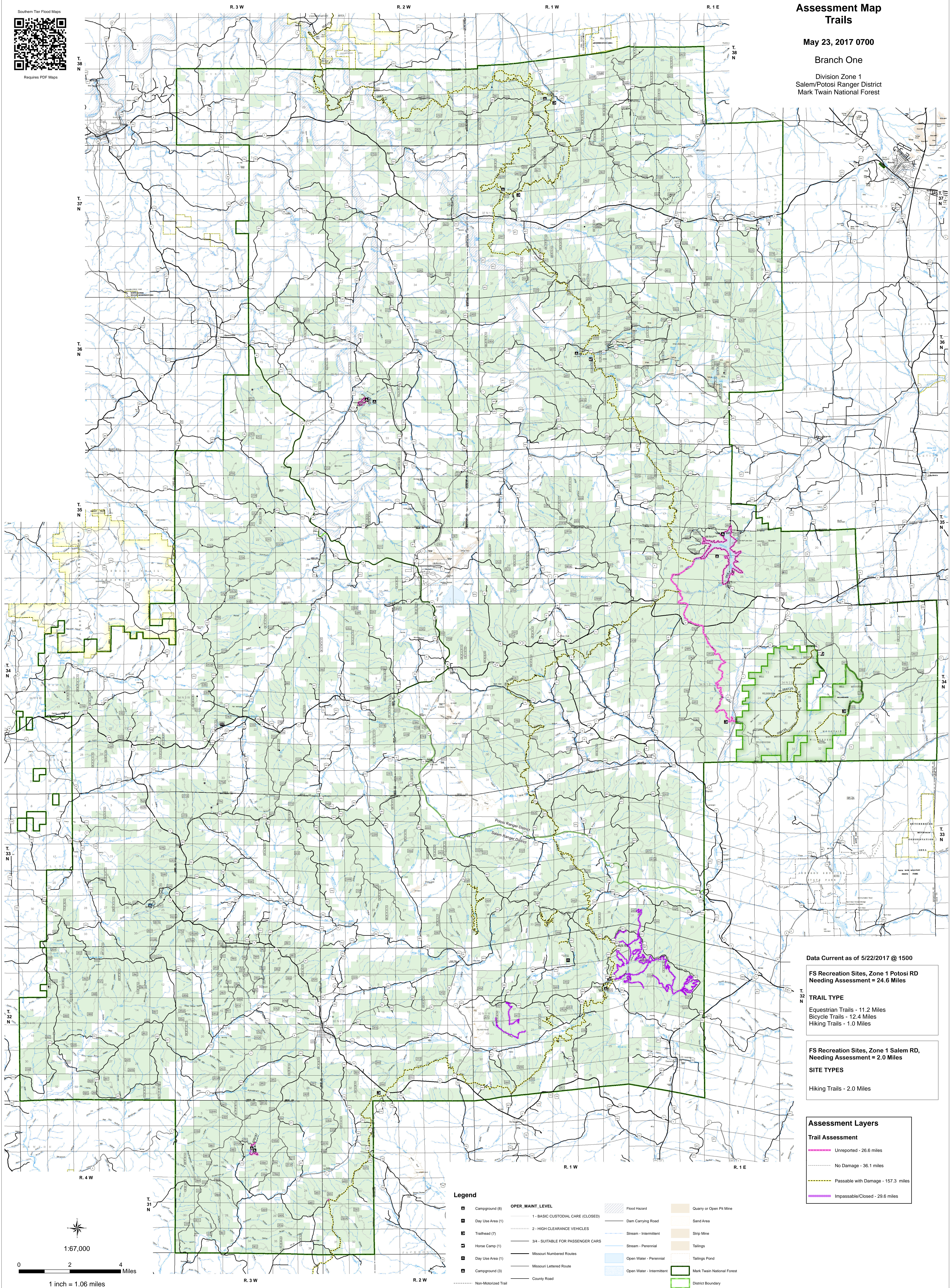
May 23, 2017 0700

Branch One

Division Zone 1
Salem/Potosi Ranger District
Mark Twain National Forest



Requires PDF Maps



Data Current as of 5/22/2017 @ 1500

FS Recreation Sites, Zone 1 Potosi RD
Needing Assessment = 24.6 Miles

TRAIL TYPE

Equestrian Trails - 11.2 Miles
Bicycle Trails - 12.4 Miles
Hiking Trails - 1.0 Miles

FS Recreation Sites, Zone 1 Salem RD,
Needing Assessment = 2.0 Miles

SITE TYPES

Hiking Trails - 2.0 Miles

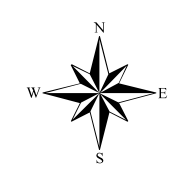
Assessment Layers

Trail Assessment

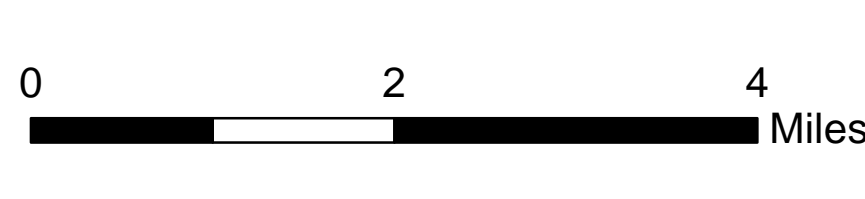
Unreported - 26.6 miles
No Damage - 36.1 miles
Passable with Damage - 157.3 miles
Impassible/Closed - 29.6 miles

Legend

- | | | | | | |
|--|---------------------|--|---------------------------|--|----------------------------|
| | Campground (8) | | Flood Hazard | | Quarry or Open Pit Mine |
| | Day Use Area (1) | | Dam Carrying Road | | Sand Area |
| | Trailhead (7) | | Stream - Intermittent | | Strip Mine |
| | Horse Camp (1) | | Stream - Perennial | | Tailings |
| | Day Use Area (1) | | Open Water - Perennial | | Tailings Pond |
| | Campground (3) | | Open Water - Intermittent | | Mark Twain National Forest |
| | Non-Motorized Trail | | County Road | | District Boundary |
| | Gate | | Other Roads | | USDA FOREST SERVICE |
| | Barrier | | Private Road | | |
| | | | Railroad | | |



1:67,000



1 inch = 1.06 miles