



Southern Tier Flood 2017  
MO-MTF-170313

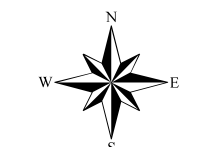


# Assessment Map Trails

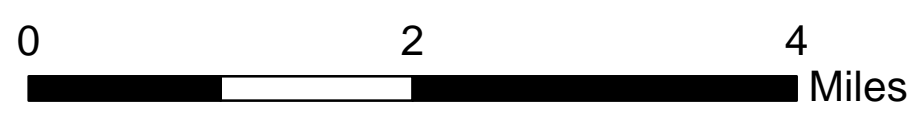
May 23, 2017 0700

Branch One

Division Zone 1  
Fredericktown Ranger District  
Mark Twain National Forest



1:63,360



1 inch = 1 miles

NAD 1983 Datum  
UTM 15 North

Prepared by:  
Eastern Area IMT  
5/22/2017 @ 1954

## Assessment Layers

### Trail Assessment

- Unreported - 6.0 miles
- - - - - No Damage - 1.7 miles
- - - - - Passable with Damage - 15.0 miles
- Impassable/Closed - 0 miles

Data Current as of 5/22/2017 @ 1500

FS Trails, Zone 1 - Fredericktown RD  
Needing Assessment = 6.0 Miles

### TRAIL TYPE

- Equestrian Trails - 5.0 Miles
- Bicycle Trails - 1.0 Miles

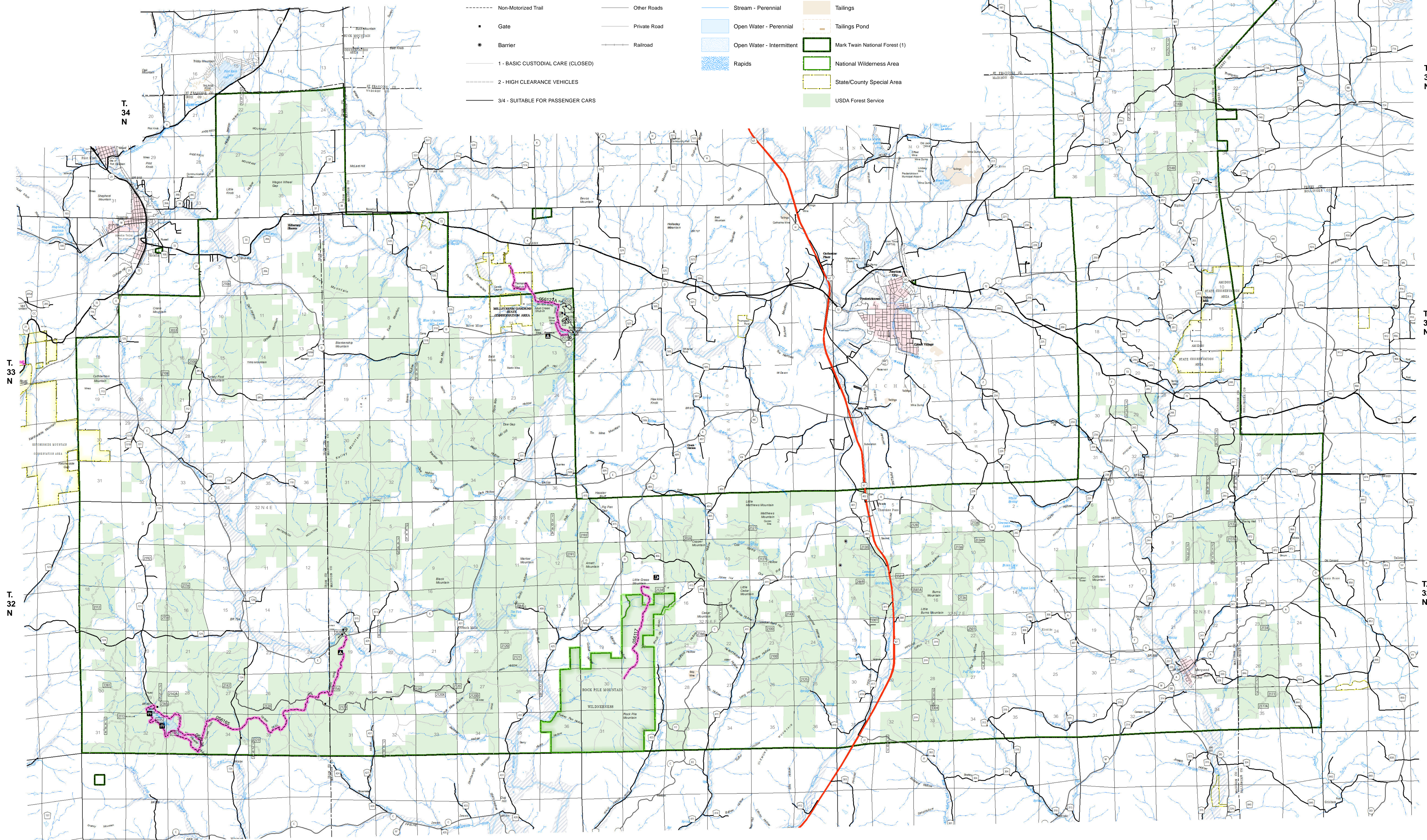
Southern Tier Flood Maps



Requires PDF Maps

## Legend

- |  |                                   |  |                          |  |                           |  |                                |
|--|-----------------------------------|--|--------------------------|--|---------------------------|--|--------------------------------|
|  | Campground (2)                    |  | US Numbered Routes       |  | Flood Hazard              |  | Mine Dump                      |
|  | Day Use Area (1)                  |  | Missouri Numbered Routes |  | Canal/Aque/Ditch          |  | Pit                            |
|  | Trailhead (1)                     |  | Missouri Lettered Route  |  | Dam Carrying Road         |  | Sand Area                      |
|  | Day Use Area (1)                  |  | County Road              |  | Stream - Intermittent     |  | Strip Mine                     |
|  | Non-Motorized Trail               |  | Other Roads              |  | Stream - Perennial        |  | Tailings                       |
|  | Gate                              |  | Private Road             |  | Open Water - Perennial    |  | Tailings Pond                  |
|  | Barrier                           |  | Railroad                 |  | Open Water - Intermittent |  | Mark Twain National Forest (1) |
|  | 1 - BASIC CUSTODIAL CARE (CLOSED) |  | Rapids                   |  | National Wilderness Area  |  | State/County Special Area      |
|  | 2 - HIGH CLEARANCE VEHICLES       |  |                          |  | USDA Forest Service       |  |                                |
|  | 3/4 - SUITABLE FOR PASSENGER CARS |  |                          |  |                           |  |                                |



R. 4 E

R. 5 E

R. 6 E

R. 7 E

R. 8 E

T. 33 N

T. 32 N

T. 34 N

T. 35 N

T. 34 N

T. 33 N

T. 32 N