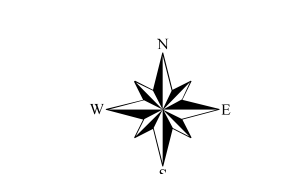


Assessment Map Roads & Recreation Sites

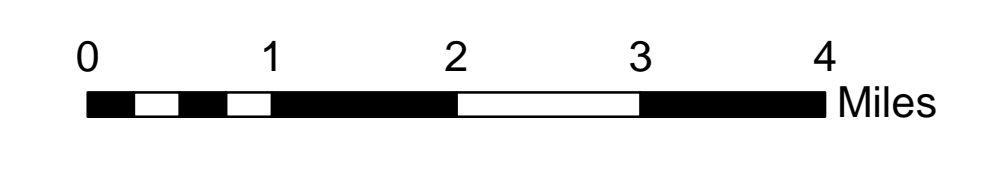
May 24, 2017 0700

Branch Two

Divisions Eleven Point and Current River
Eleven Point/Doniphan Ranger District
Mark Twain National Forest



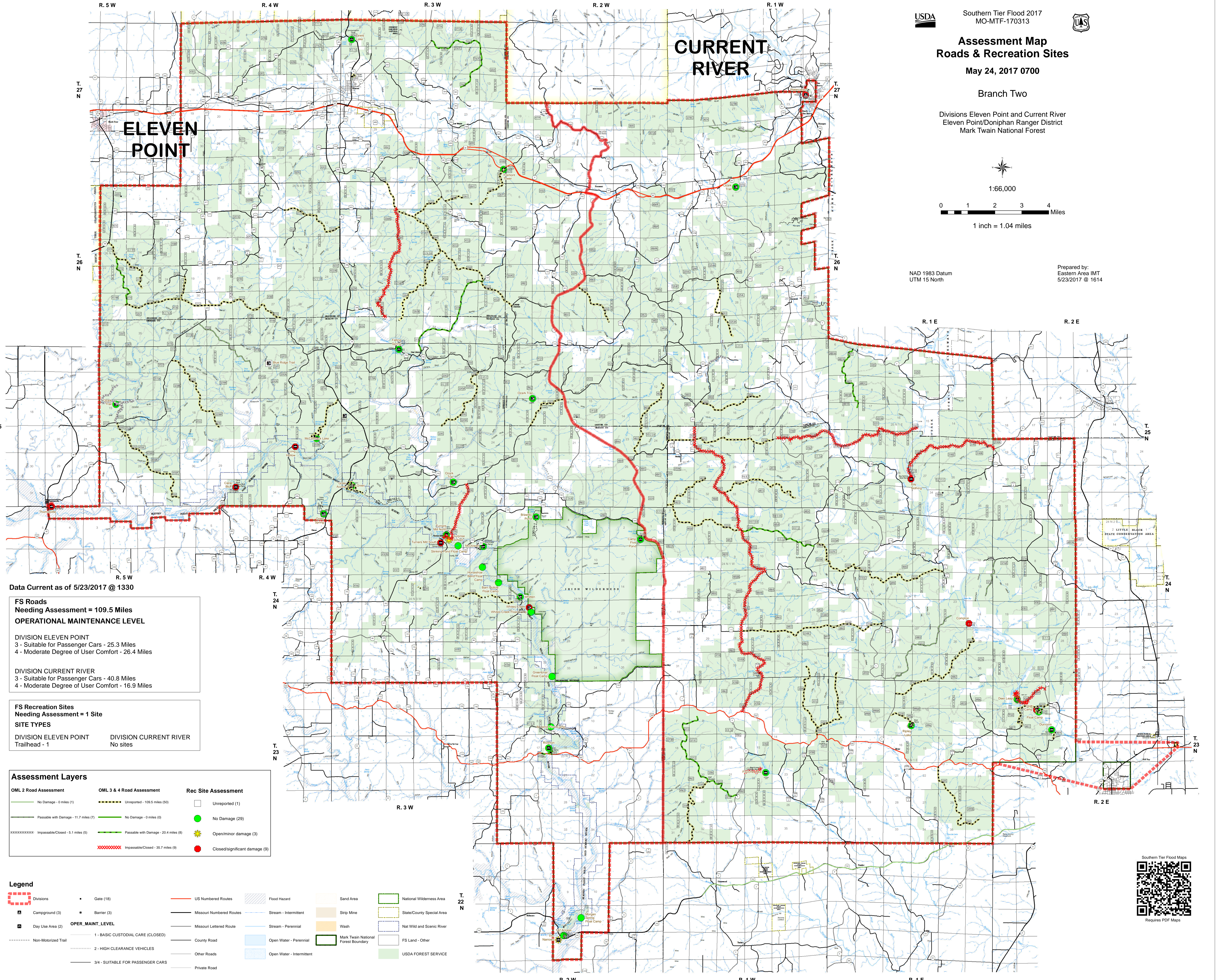
1:66,000



1 inch = 1.04 miles

NAD 1983 Datum
UTM 15 North

Prepared by:
Eastern Area IMT
5/23/2017 @ 1614



Data Current as of 5/23/2017 @ 1330

**FS Roads
Needing Assessment = 109.5 Miles
OPERATIONAL MAINTENANCE LEVEL**

DIVISION ELEVEN POINT
3 - Suitable for Passenger Cars - 25.3 Miles
4 - Moderate Degree of User Comfort - 26.4 Miles

DIVISION CURRENT RIVER
3 - Suitable for Passenger Cars - 40.8 Miles
4 - Moderate Degree of User Comfort - 16.9 Miles

**FS Recreation Sites
Needing Assessment = 1 Site
SITE TYPES**

| | |
|---|---|
| DIVISION ELEVEN POINT Trailhead - 1 | DIVISION CURRENT RIVER No sites |
|---|---|

Assessment Layers

| | | |
|--|---|---------------------------------|
| OML 2 Road Assessment | OML 3 & 4 Road Assessment | Rec Site Assessment |
| — No Damage - 0 miles (1) | — Unreported - 109.5 miles (50) | □ Unreported (1) |
| — Passable with Damage - 11.7 miles (7) | — No Damage - 0 miles (0) | ● No Damage (29) |
| XXXXXXXXXX Impassable/Closed - 5.1 miles (5) | — Passable with Damage - 20.4 miles (8) | ⚡ Open/minor damage (3) |
| — Impassable/Closed - 35.7 miles (9) | — Impassable/Closed - 35.7 miles (9) | ● Closed/significant damage (9) |

Legend

| | | | | | |
|-------------------------------------|-----------------------------------|----------------------------|-----------------------------|---------------------------------------|-----------------------------|
| ▭ Divisions | • Gate (18) | — US Numbered Routes | ▨ Flood Hazard | ▭ Sand Area | ▭ National Wilderness Area |
| ▭ Campground (3) | • Barrier (3) | — Missouri Numbered Routes | — Stream - Intermittent | ▭ Strip Mine | ▭ State/County Special Area |
| ▭ Day Use Area (2) | OPER_MAINT_LEVEL | — Missouri Lettered Route | — Stream - Perennial | ▭ Wash | ▭ Nat Wild and Scenic River |
| — Non-Motorized Trail | 1 - BASIC CUSTODIAL CARE (CLOSED) | — County Road | ▭ Open Water - Perennial | ▭ Mark Twain National Forest Boundary | ▭ FS Land - Other |
| — 2 - HIGH CLEARANCE VEHICLES | 2 - HIGH CLEARANCE VEHICLES | — Other Roads | ▭ Open Water - Intermittent | ▭ USDA FOREST SERVICE | |
| — 3/4 - SUITABLE FOR PASSENGER CARS | 3/4 - SUITABLE FOR PASSENGER CARS | — Private Road | | | |



Requires PDF Maps