



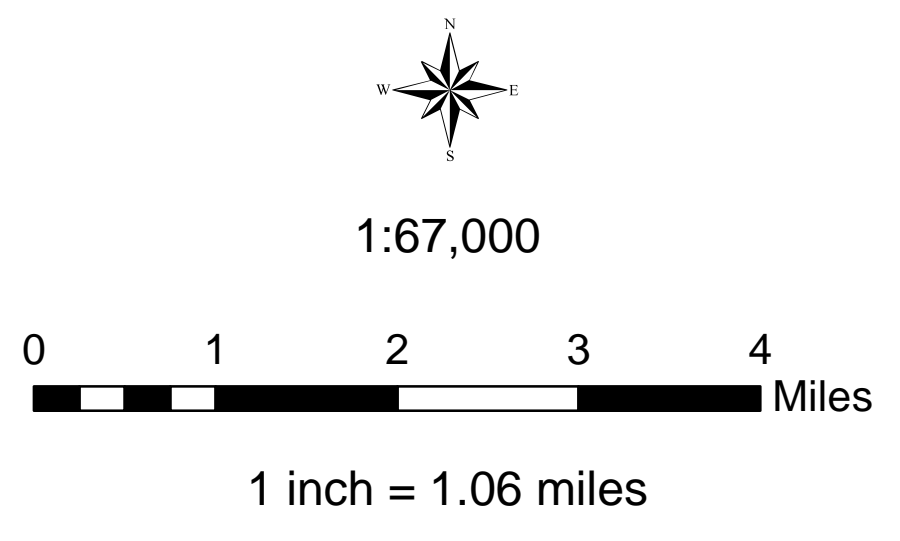
Requires PDF Maps

**USDA** Southern Tier Flood 2017  
MO-MTF-170313

**Assessment Map  
Roads & Recreation Sites**

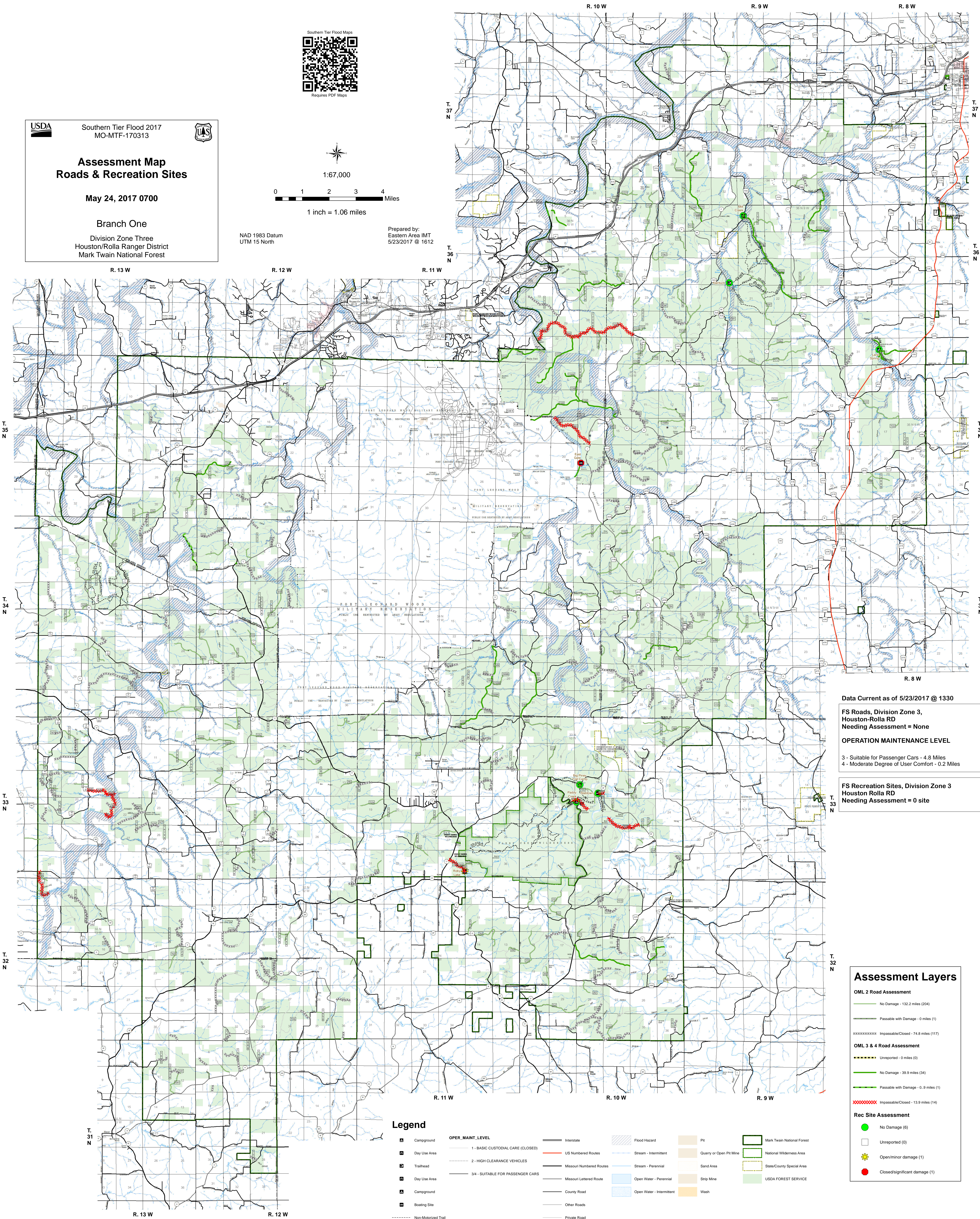
May 24, 2017 0700

Branch One  
Division Zone Three  
Houston/Rolla Ranger District  
Mark Twain National Forest



NAD 1983 Datum  
UTM 15 North

Prepared by:  
Eastern Area IMT  
5/23/2017 @ 1612



Data Current as of 5/23/2017 @ 1330

**FS Roads, Division Zone 3,  
Houston-Rolla RD  
Needing Assessment = None**

**OPERATION MAINTENANCE LEVEL**

3 - Suitable for Passenger Cars - 4.8 Miles  
4 - Moderate Degree of User Comfort - 0.2 Miles

**FS Recreation Sites, Division Zone 3  
Houston Rolla RD  
Needing Assessment = 0 site**

**Assessment Layers**

**OML 2 Road Assessment**

- No Damage - 132.2 miles (204)
- Passable with Damage - 0 miles (1)
- Impassable/Closed - 74.8 miles (117)

**OML 3 & 4 Road Assessment**

- Unreported - 0 miles (0)
- No Damage - 39.9 miles (34)
- Passable with Damage - 0.9 miles (1)
- Impassable/Closed - 13.9 miles (14)

**Rec Site Assessment**

- No Damage (6)
- Unreported (0)
- Open/Minor damage (1)
- Closed/significant damage (1)

**Legend**

Campground	<b>OPER. MAINT. LEVEL</b>	Interstate	Flood Hazard	Pit	Mark Twain National Forest
Day Use Area	1 - BASIC CUSTODIAL CARE (CLOSED)	US Numbered Routes	Stream - Intermittent	Quarry or Open Pit Mine	National Wilderness Area
Trailhead	2 - HIGH CLEARANCE VEHICLES	Missouri Numbered Routes	Stream - Perennial	Sand Area	State/County Special Area
Day Use Area	3/4 - SUITABLE FOR PASSENGER CARS	Missouri Lettered Routes	Open Water - Perennial	Strip Mine	USDA FOREST SERVICE
Campground		County Road	Open Water - Intermittent	Wash	
Boasting Site		Other Roads			
Non-Motorized Trail		Private Road			
Gate		Railroad			
Barrier					