

R 12 W

R 11 W

R 10 W

R 9 W

T 27 N

T 27 N

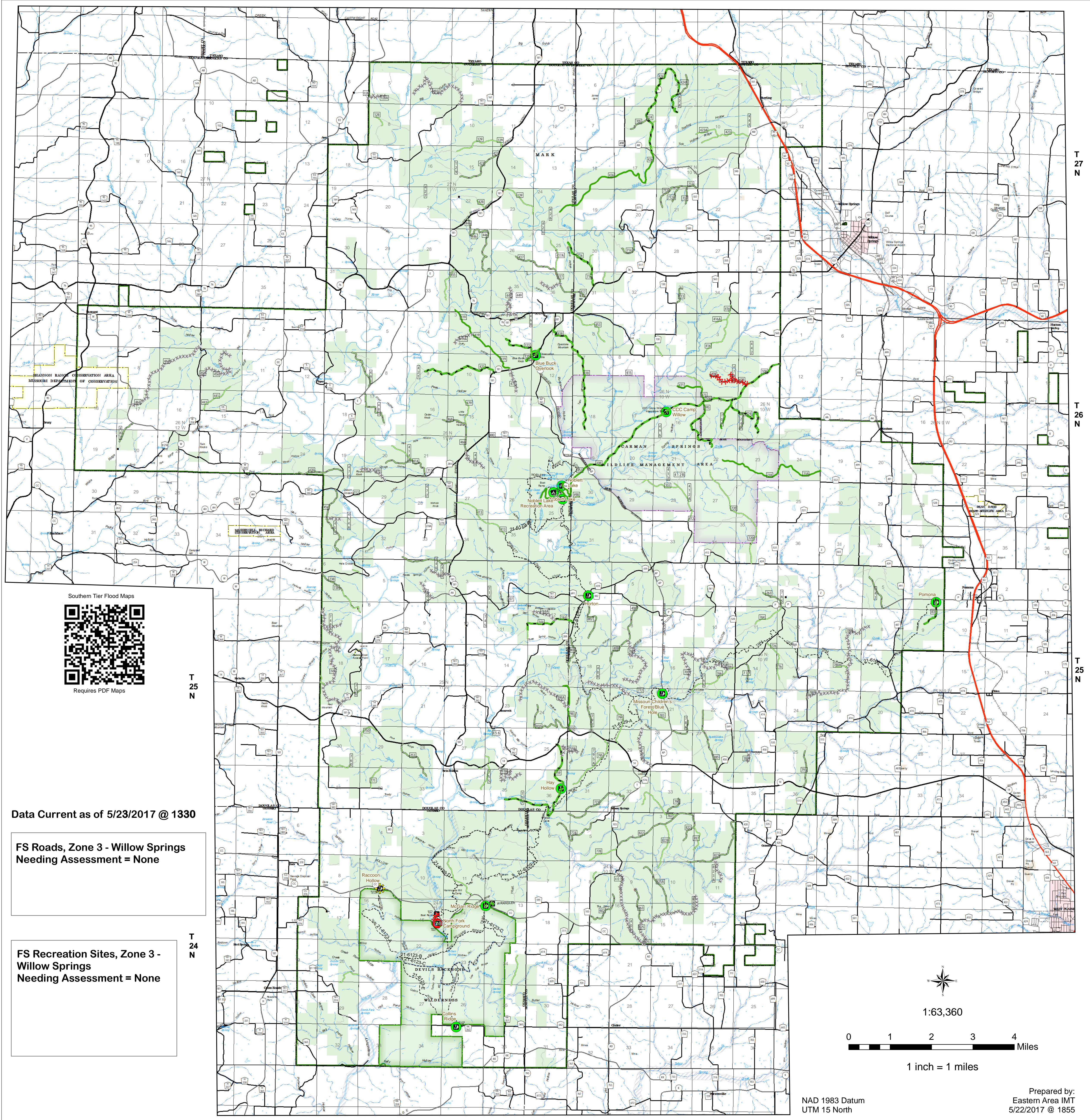
T 26 N

T 26 N

T 25 N

T 25 N

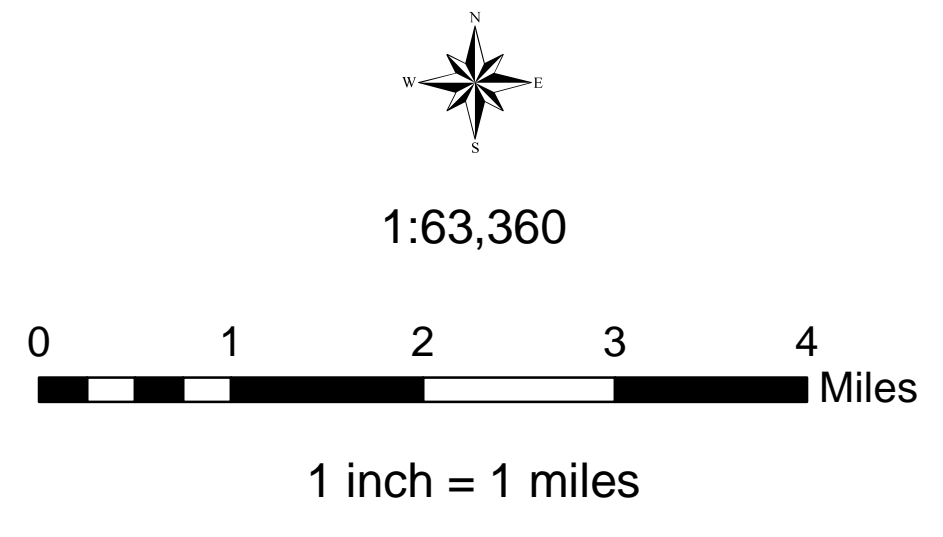
T 24 N



Data Current as of 5/23/2017 @ 1330

FS Roads, Zone 3 - Willow Springs
Needing Assessment = None

FS Recreation Sites, Zone 3 -
Willow Springs
Needing Assessment = None



NAD 1983 Datum
UTM 15 North

Prepared by:
Eastern Area IMT
5/22/2017 @ 1855

USDA Southern Tier Flood 2017 MO-MTF-170313

Assessment Map Roads & Recreation Sites

May 24, 2017 0700

Branch One

Division Zone 3
Willow Springs Ranger District
Mark Twain National Forest

Assessment Layers		
OML 2 Road Assessment	OML 3 & 4 Road Assessment	Rec Site Assessment
No Damage - 37.1 miles	Unreported - 0 miles	Unreported (0)
Passable with Damage - 42.87 miles	No Damage - 14.91 miles	No Damage (11)
Impassible/Closed - 36.0 miles	Passable with Damage - 25.7 miles	Open/minor damage (1)
	Impassible/Closed - 1.8 miles	Closed/significant damage (1)

Legend		
Campground (2)	Non-Motorized Trail	US Numbered Routes
Trailhead (9)	Gate (31)	Flood Hazard
Observation Site (1)	Barrier (5)	Stream - Intermittent
Interpretive Site (Minor) (1)	OPER_MAINT_LEVEL	Stream - Perennial
Day Use Area (1)	1 - BASIC CUSTODIAL CARE (CLOSED)	Waterfall
Campground (1)	2 - HIGH CLEARANCE VEHICLES	Open Water - Perennial
	3/4 - SUITABLE FOR PASSENGER CARS	Open Water - Intermittent
Missouri Numbered Routes	Missouri Lettered Route	Quarry or Open Pit Mine
County Road	Other Roads	Sand Area
Private Road	Railroad	Strip Mine
Mark Twain National Forest	National Wilderness Area	State/County Special Area
FS Spec Mgt/Rec Area	USDA Forest Service	