



Southern Tier Flood 2017
MO-MTF-170313



Assessment Map Trails

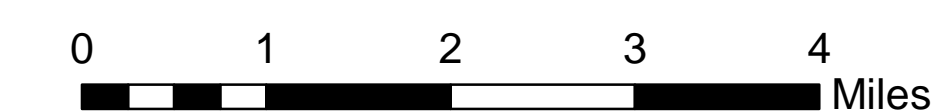
May 24, 2017 0700

Branch Two

Divisions Eleven Point and Current River
Eleven Point/Doniphan Ranger District
Mark Twain National Forest



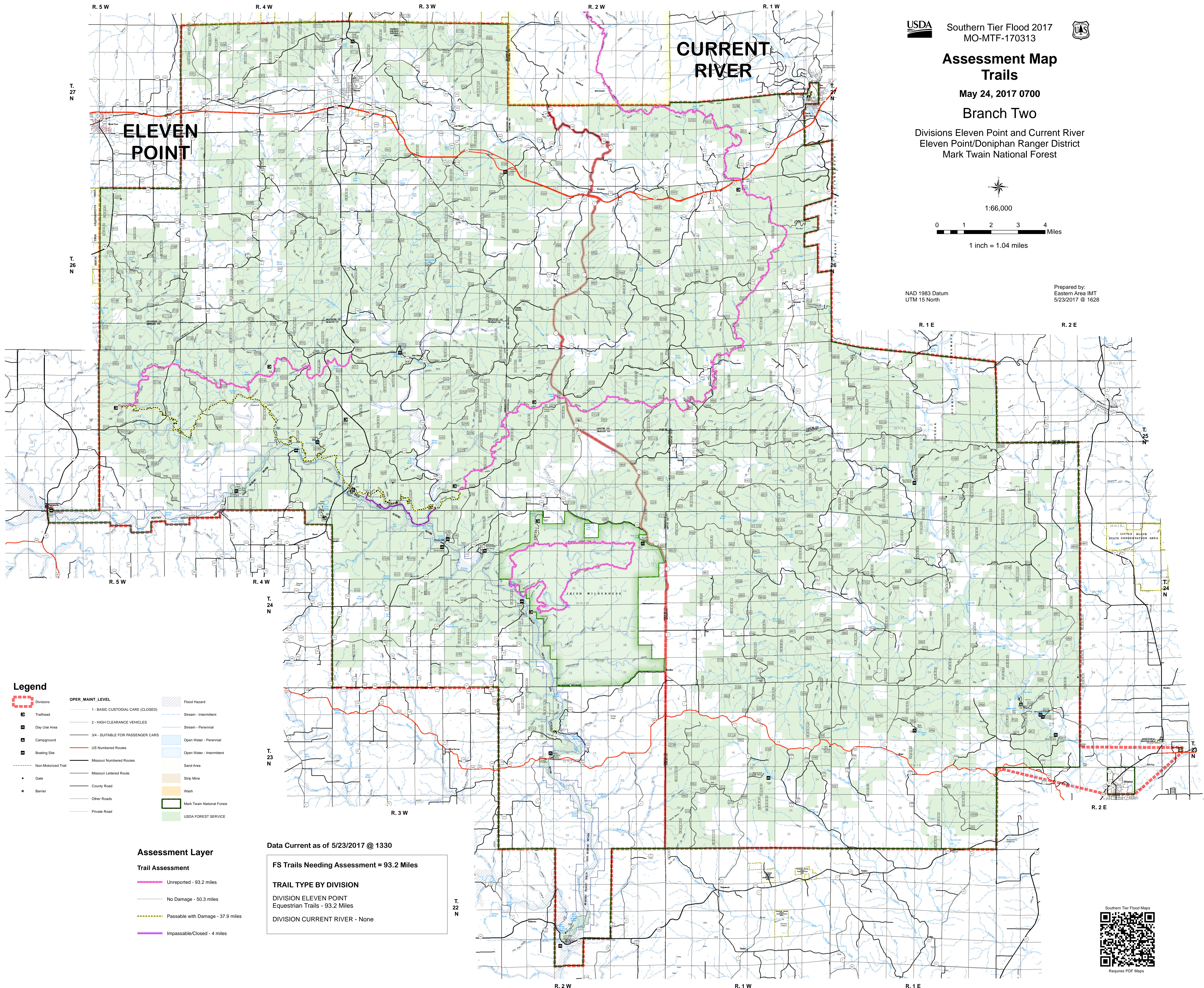
1:66,000



1 inch = 1.04 miles

NAD 1983 Datum
UTM 15 North

Prepared by:
Eastern Area IMT
5/23/2017 @ 1628



Legend

- | | | |
|---------------------|-----------------------------------|----------------------------|
| Divisions | OPER. MAINT. LEVEL | Flood Hazard |
| Trailhead | 1 - BASIC CUSTODIAL CARE (CLOSED) | Stream - Intermittent |
| Day Use Area | 2 - HIGH CLEARANCE VEHICLES | Stream - Perennial |
| Campground | 3/4 - SUITABLE FOR PASSENGER CARS | Open Water - Perennial |
| Boating Site | US Numbered Routes | Open Water - Intermittent |
| Non-Motorized Trail | Missouri Numbered Routes | Sand Area |
| Gate | Missouri Lettered Route | Strip Mine |
| Barrier | County Road | Wash |
| | Other Roads | Mark Twain National Forest |
| | Private Road | USDA FOREST SERVICE |

Assessment Layer

Trail Assessment

- Unreported - 93.2 miles
- No Damage - 50.3 miles
- Passable with Damage - 37.9 miles
- Impassible/Closed - 4 miles

Data Current as of 5/23/2017 @ 1330

FS Trails Needing Assessment = 93.2 Miles

TRAIL TYPE BY DIVISION

DIVISION ELEVEN POINT
Equestrian Trails - 93.2 Miles

DIVISION CURRENT RIVER - None



Requires PDF Maps