

R 12 W

R 11 W

R 10 W

R 9 W

T 27 N

T 27 N

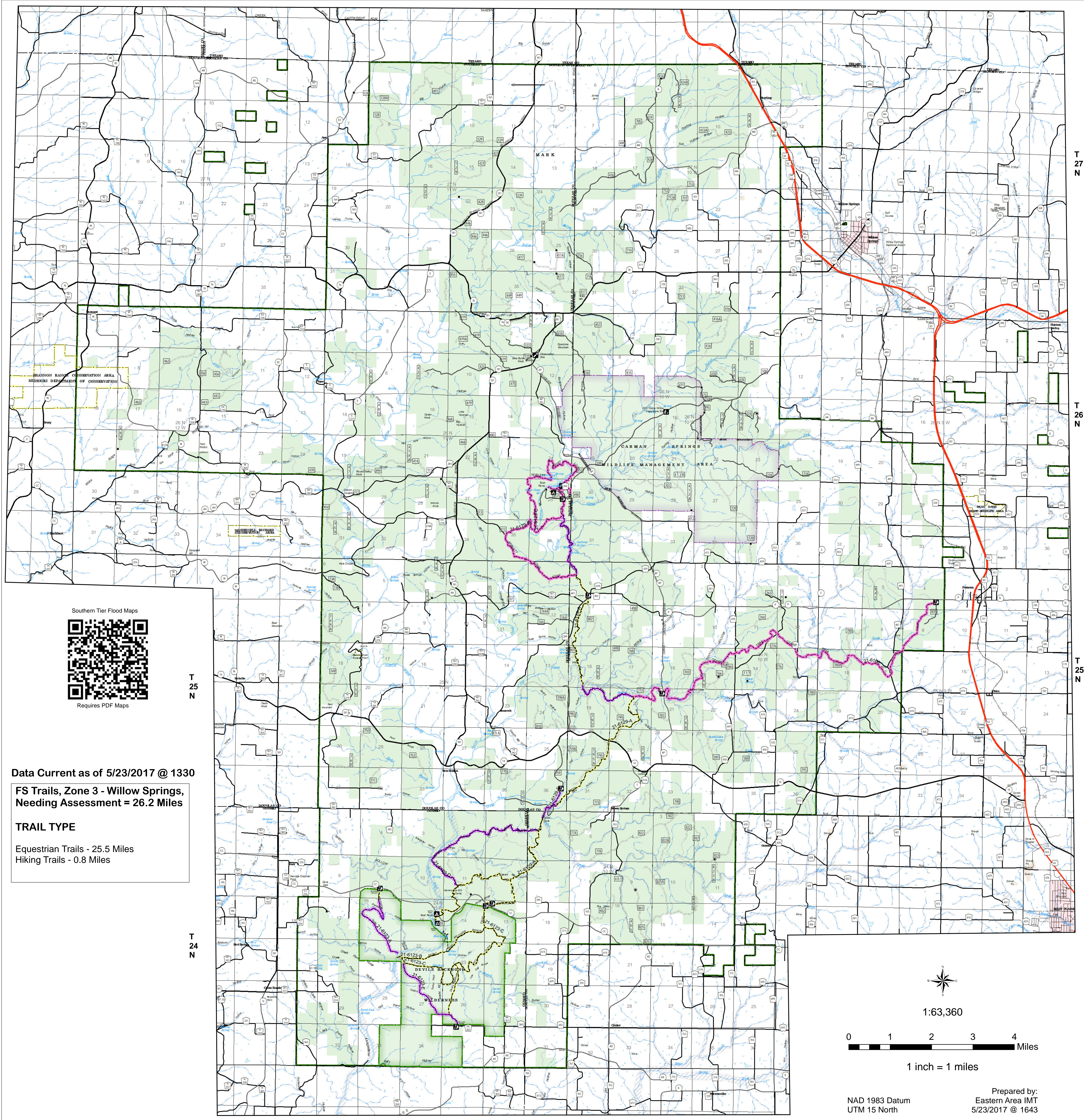
T 26 N

T 26 N

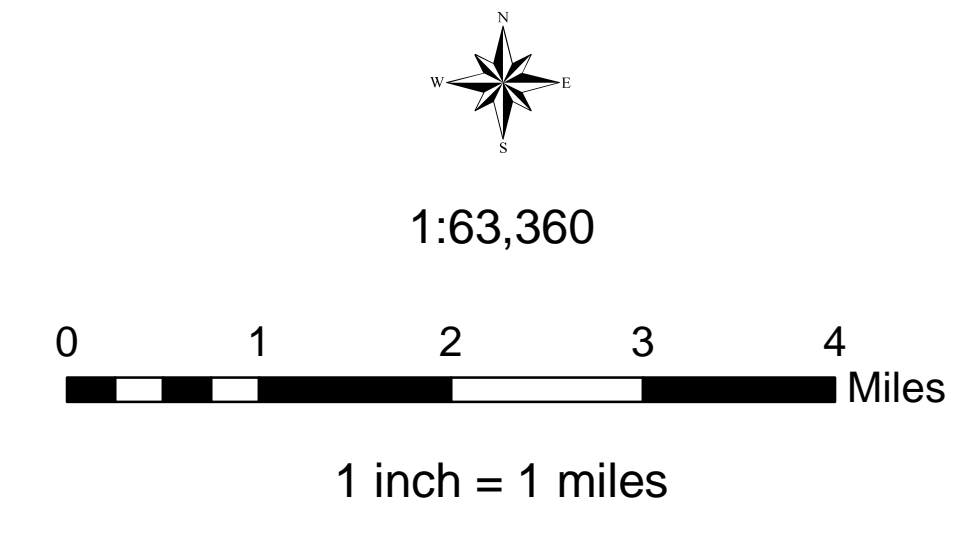
T 25 N

T 25 N

T 24 N



Data Current as of 5/23/2017 @ 1330
FS Trails, Zone 3 - Willow Springs, Needing Assessment = 26.2 Miles
TRAIL TYPE
 Equestrian Trails - 25.5 Miles
 Hiking Trails - 0.8 Miles



Prepared by:
 Eastern Area IMT
 5/23/2017 @ 1643

USDA Southern Tier Flood 2017 MO-MTF-170313 UAS

Assessment Map Trails

May 24, 2017 0700

Branch One
 Division Zone 3
 Willow Springs Ranger District
 Mark Twain National Forest

Assessment Layers		Legend	
Unreported - 28.4 miles	Non-Motorized Trail	US Numbered Routes	Flood Hazard
No Damage - 0.75 miles	Gate (31)	Missouri Numbered Routes	Stream - Intermittent
Passable with Damage - 33.4 miles	Barrier (5)	Missouri Lettered Route	Stream - Perennial
Impassable/Closed - 26.8 miles	Interpretive Site (Minor) (1)	County Road	Waterfall
	Day Use Area (1)	Other Roads	Open Water - Perennial
	Campground (1)	Private Road	Open Water - Intermittent
		Railroad	
	OPER_MAINT_LEVEL		
	1 - BASIC CUSTODIAL CARE (CLOSED)		
	2 - HIGH CLEARANCE VEHICLES		
	3/4 - SUITABLE FOR PASSENGER CARS		
		Quarry or Open Pit Mine	Mark Twain National Forest
		Sand Area	National Wilderness Area
		Strip Mine	State/County Special Area
			FS Spec Mgt/Rec Area
			USDA Forest Service