



Southern Tier Flood 2017  
MO-MTF-170313

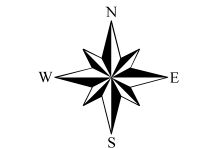


# Assessment Map Trails

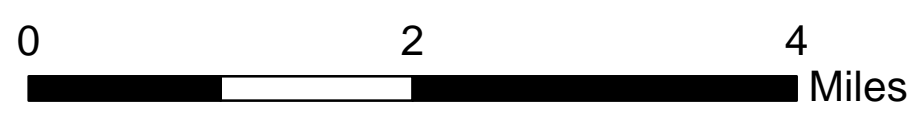
May 24, 2017 0700

Branch One

Division Zone 1  
Fredericktown Ranger District  
Mark Twain National Forest



1:63,360



1 inch = 1 miles

NAD 1983 Datum  
UTM 15 North

Prepared by:  
Eastern Area IMT  
5/23/2017 @ 1626

## Assessment Layers

### Trail Assessment

- Unreported - 6.0 miles
- - - - - No Damage - 1.7 miles
- - - - - Passable with Damage - 15.0 miles
- Impassable/Closed - 0 miles

Data Current as of 5/23/2017 @ 1330

FS Trails, Zone 1 - Fredericktown RD  
Needing Assessment = 6.0 Miles

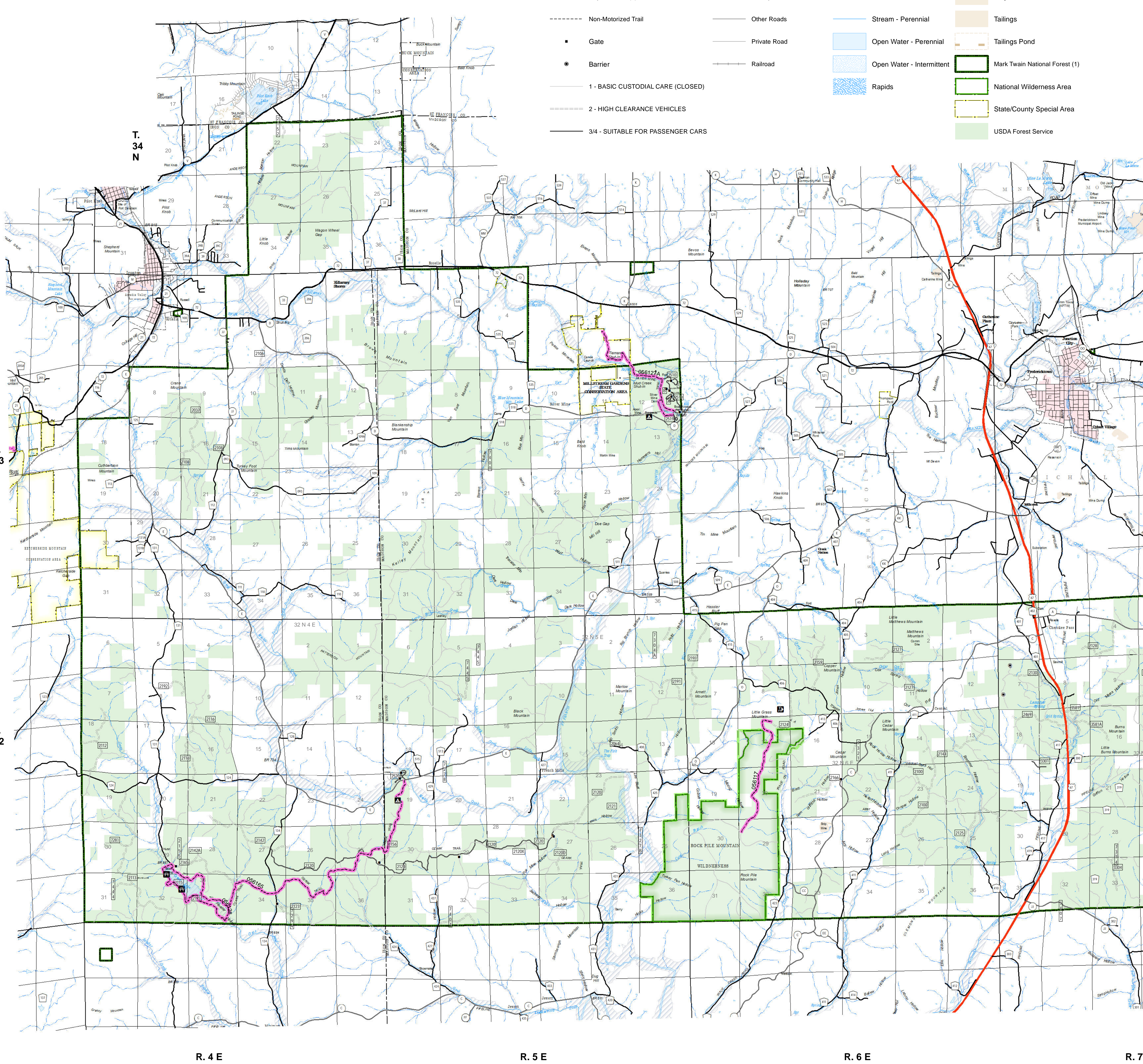
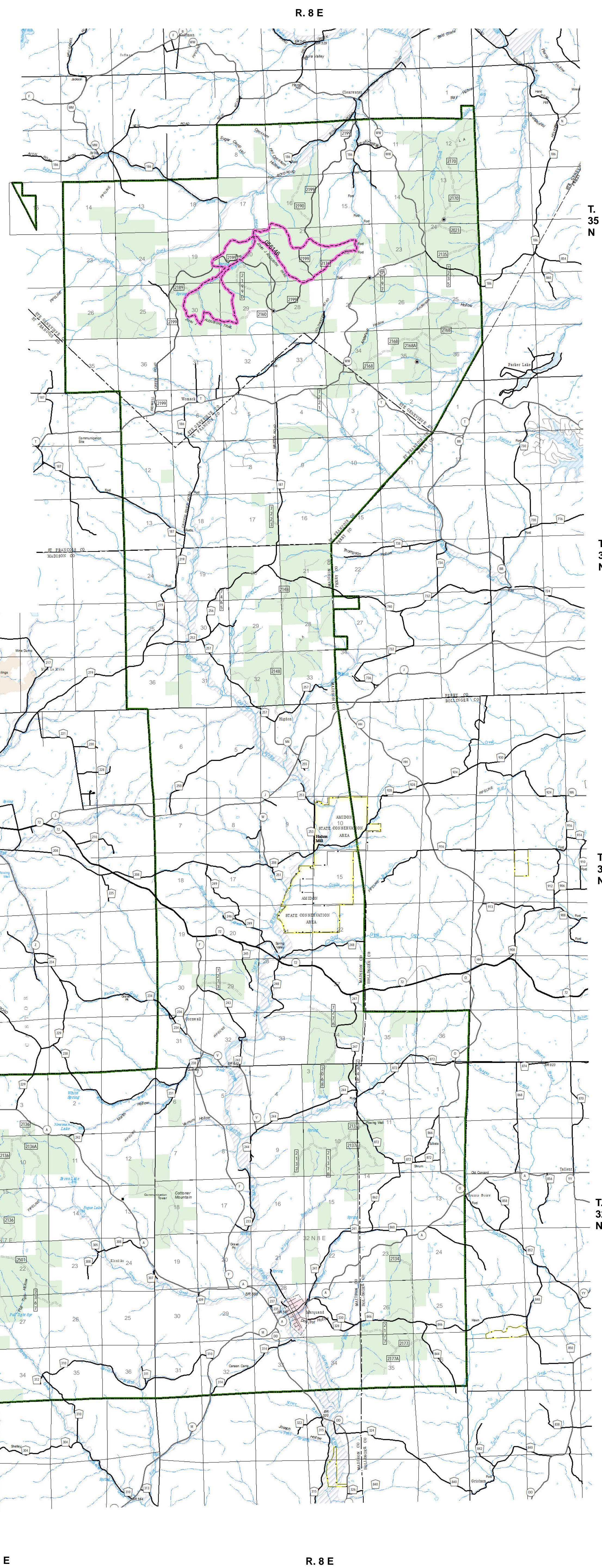
### TRAIL TYPE

Equestrian Trails - 5.0 Miles  
Bicycle Trails - 1.0 Miles



## Legend

- |                                   |                          |                           |                                |
|-----------------------------------|--------------------------|---------------------------|--------------------------------|
| Campground (2)                    | US Numbered Routes       | Flood Hazard              | Mine Dump                      |
| Day Use Area (1)                  | Missouri Numbered Routes | Canal/Aque/Ditch          | Pit                            |
| Trailhead (1)                     | Missouri Lettered Route  | Dam Carrying Road         | Sand Area                      |
| Day Use Area (1)                  | County Road              | Stream - Intermittent     | Strip Mine                     |
| Non-Motorized Trail               | Other Roads              | Stream - Perennial        | Tailings                       |
| Gate                              | Private Road             | Open Water - Perennial    | Tailings Pond                  |
| Barrier                           | Railroad                 | Open Water - Intermittent | Mark Twain National Forest (1) |
| 1 - BASIC CUSTODIAL CARE (CLOSED) |                          | Rapids                    | National Wilderness Area       |
| 2 - HIGH CLEARANCE VEHICLES       |                          |                           | State/County Special Area      |
| 3/4 - SUITABLE FOR PASSENGER CARS |                          |                           | USDA Forest Service            |



R. 4 E

R. 5 E

R. 6 E

R. 7 E

R. 8 E

T. 33 N

T. 32 N

T. 34 N

T. 35 N

T. 34 N

T. 33 N

T. 32 N