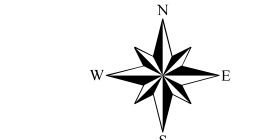


Assessment Map Roads & Recreation Sites

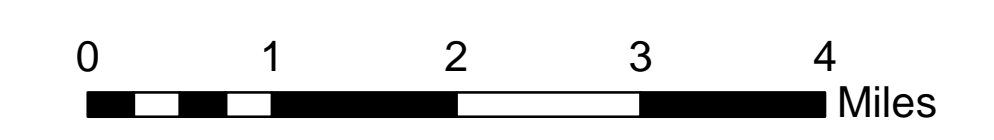
May 25 2017 0700

Branch Two

Divisions Eleven Point and Current River
Eleven Point/Doniphan Ranger District
Mark Twain National Forest



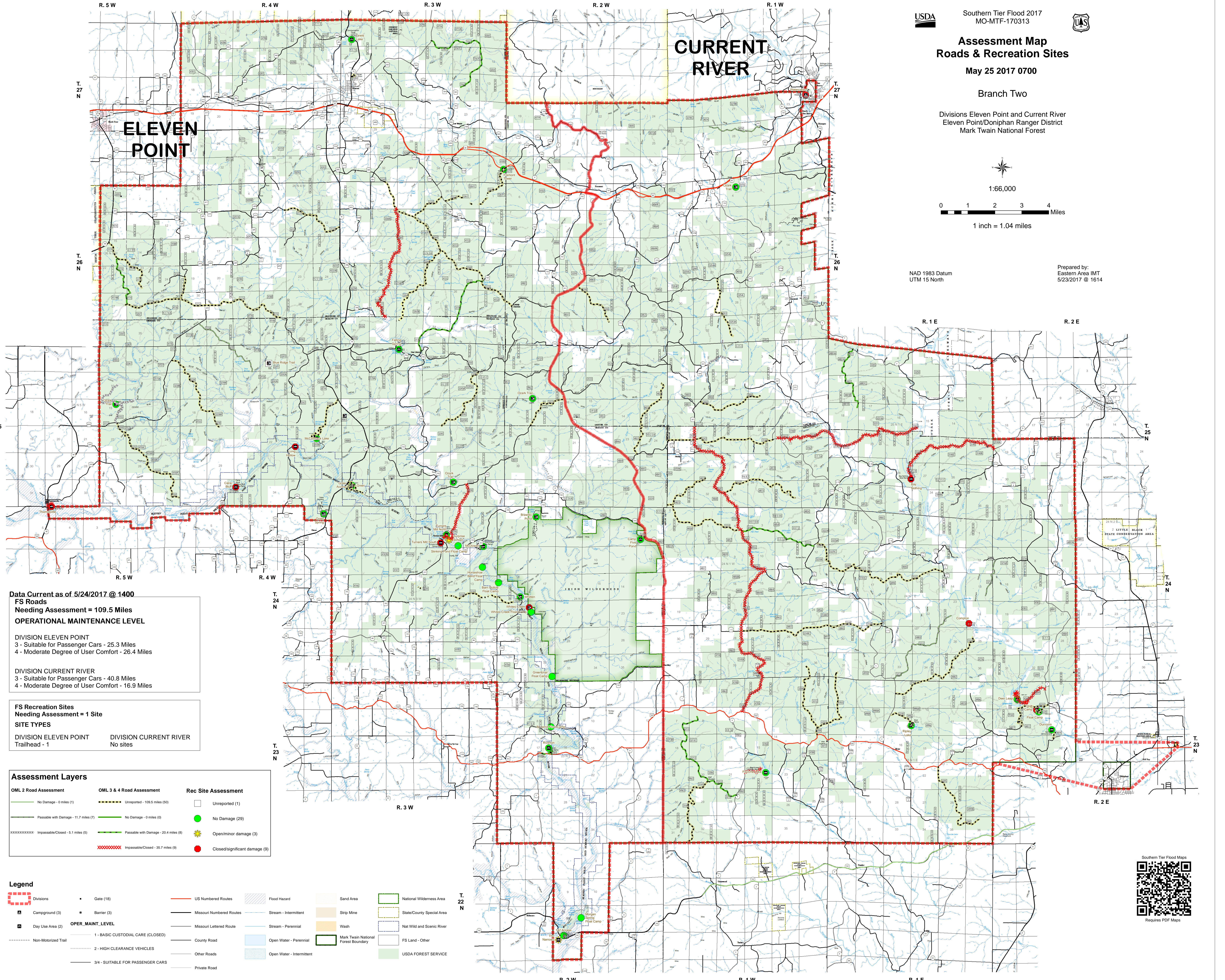
1:66,000



1 inch = 1.04 miles

NAD 1983 Datum
UTM 15 North

Prepared by:
Eastern Area IMT
5/23/2017 @ 1614



Data Current as of 5/24/2017 @ 1400
FS Roads
 Needing Assessment = 109.5 Miles
OPERATIONAL MAINTENANCE LEVEL

DIVISION ELEVEN POINT
 3 - Suitable for Passenger Cars - 25.3 Miles
 4 - Moderate Degree of User Comfort - 26.4 Miles

DIVISION CURRENT RIVER
 3 - Suitable for Passenger Cars - 40.8 Miles
 4 - Moderate Degree of User Comfort - 16.9 Miles

FS Recreation Sites
 Needing Assessment = 1 Site
SITE TYPES

DIVISION ELEVEN POINT **DIVISION CURRENT RIVER**
 Trailhead - 1 No sites

Assessment Layers

OML 2 Road Assessment	OML 3 & 4 Road Assessment	Rec Site Assessment
No Damage - 0 miles (1)	Unreported - 109.5 miles (50)	Unreported (1)
Passable with Damage - 11.7 miles (7)	No Damage - 0 miles (0)	No Damage (29)
Impassible/Closed - 5.1 miles (5)	Passable with Damage - 20.4 miles (8)	Open/minor damage (3)
Impassible/Closed - 35.7 miles (9)	Impassible/Closed - 35.7 miles (9)	Closed/significant damage (9)

Legend

Divisions	Gate (18)	US Numbered Routes	Flood Hazard	Sand Area	National Wilderness Area
Campground (3)	Barrier (3)	Missouri Numbered Routes	Stream - Intermittent	Strip Mine	State/County Special Area
Day Use Area (2)	OPER_MAINT_LEVEL	Missouri Lettered Route	Stream - Perennial	Wash	Nat Wild and Scenic River
Non-Motorized Trail	1 - BASIC CUSTODIAL CARE (CLOSED)	County Road	Open Water - Perennial	Mark Twain National Forest Boundary	FS Land - Other
	2 - HIGH CLEARANCE VEHICLES	Other Roads	Open Water - Intermittent	USDA FOREST SERVICE	
	3/4 - SUITABLE FOR PASSENGER CARS	Private Road			



Requires PDF Maps