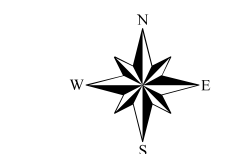


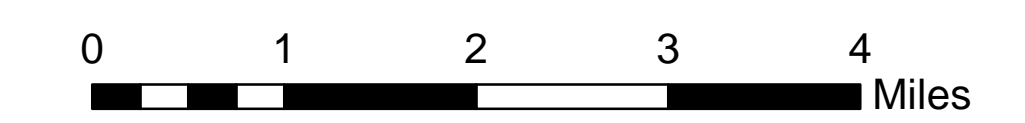
Assessment Map Roads & Recreation Sites

May 25, 2017 0700

Branch One
Division Zone 3
Ava Ranger District
Mark Twain National Forest



1:63,360



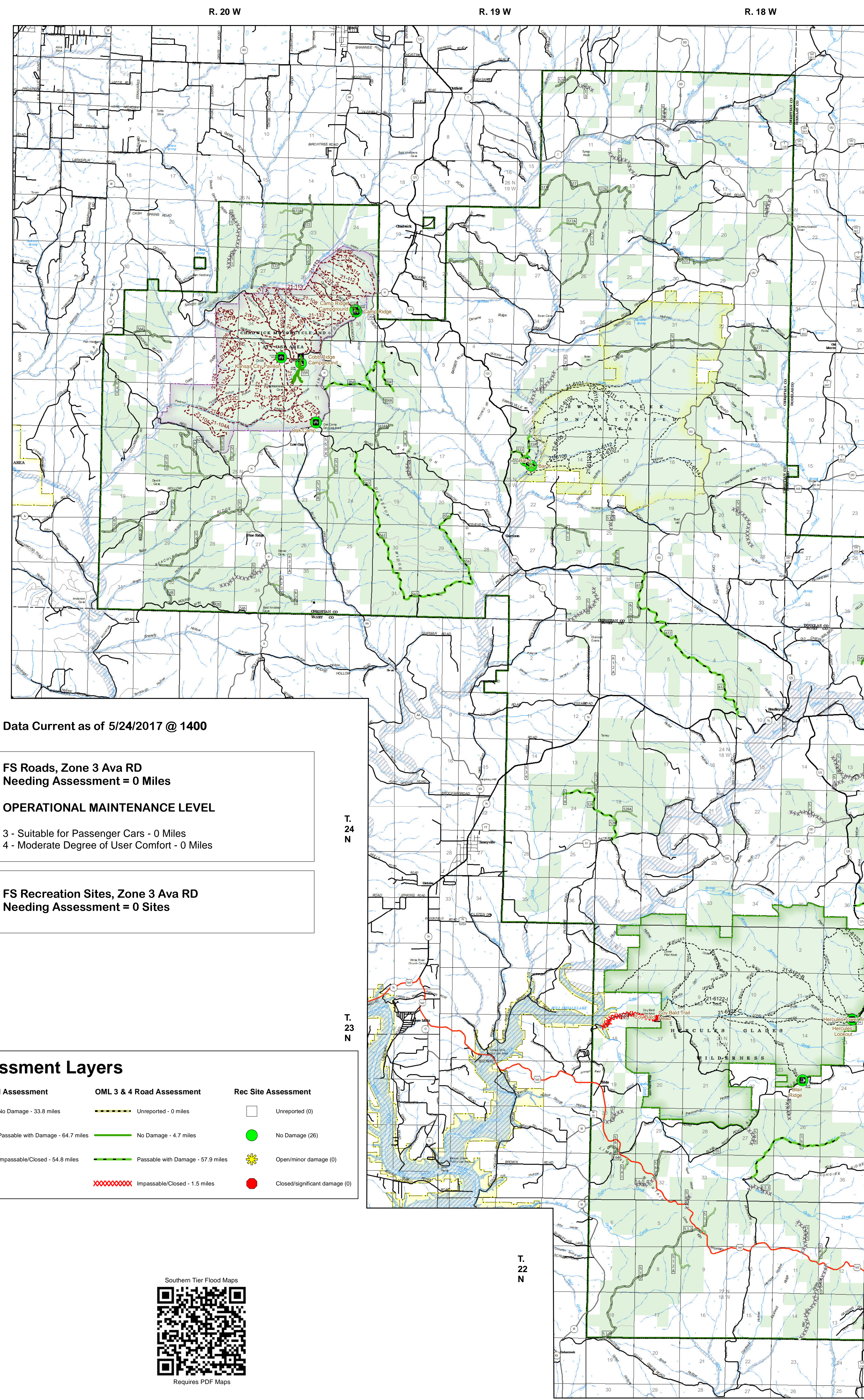
1 inch = 1 miles

NAD 1983 Datum
UTM 15 North

Prepared by:
Eastern Area IMT
5/23/2017 @ 1616

Legend

- | | | | |
|---------------------------|-----------------------------------|----------------------------|---------------------------|
| Trailhead (3) | OPER. MAINT. LEVEL | Flood Hazard | Pit |
| Observation Site (4) | 1 - BASIC CUSTODIAL CARE (CLOSED) | Channel in Water Area | Sand Area |
| Info Site/Fee Station (1) | 2 - HIGH CLEARANCE VEHICLES | Stream - Intermittent | National Wilderness Area |
| Day Use Area (9) | 3/4 - SUITABLE FOR PASSENGER CARS | Stream - Perennial | State/County Special Area |
| Campground (5) | US Numbered Routes | Land Subject to Inundation | FS Spec Mgt/Rec Area |
| Non-Motorized Trail | Missouri Numbered Routes | Open Water - Perennial | |
| Motorized Trail | Missouri Lettered Route | Open Water - Intermittent | |
| Gate (37) | County Road | Mark Twain National Forest | |
| Barrier (1) | Other Roads | USDA Forest Service | |
| | Private Road | | |



Data Current as of 5/24/2017 @ 1400

**FS Roads, Zone 3 Ava RD
Needing Assessment = 0 Miles**

OPERATIONAL MAINTENANCE LEVEL

3 - Suitable for Passenger Cars - 0 Miles
4 - Moderate Degree of User Comfort - 0 Miles

**FS Recreation Sites, Zone 3 Ava RD
Needing Assessment = 0 Sites**

Assessment Layers

| | | |
|-----------------------------------|--------------------------------------|-------------------------------|
| OML 2 Road Assessment | OML 3 & 4 Road Assessment | Rec Site Assessment |
| No Damage - 33.8 miles | Unreported - 0 miles | Unreported (0) |
| Passable with Damage - 64.7 miles | No Damage - 4.7 miles | No Damage (26) |
| Impassable/Closed - 54.6 miles | Passable with Damage - 57.9 miles | Open/minor damage (0) |
| | Impassable/Closed - 1.5 miles | Closed/significant damage (0) |

