

R 12 W

R 11 W

R 10 W

R 9 W

T 27 N

T 27 N

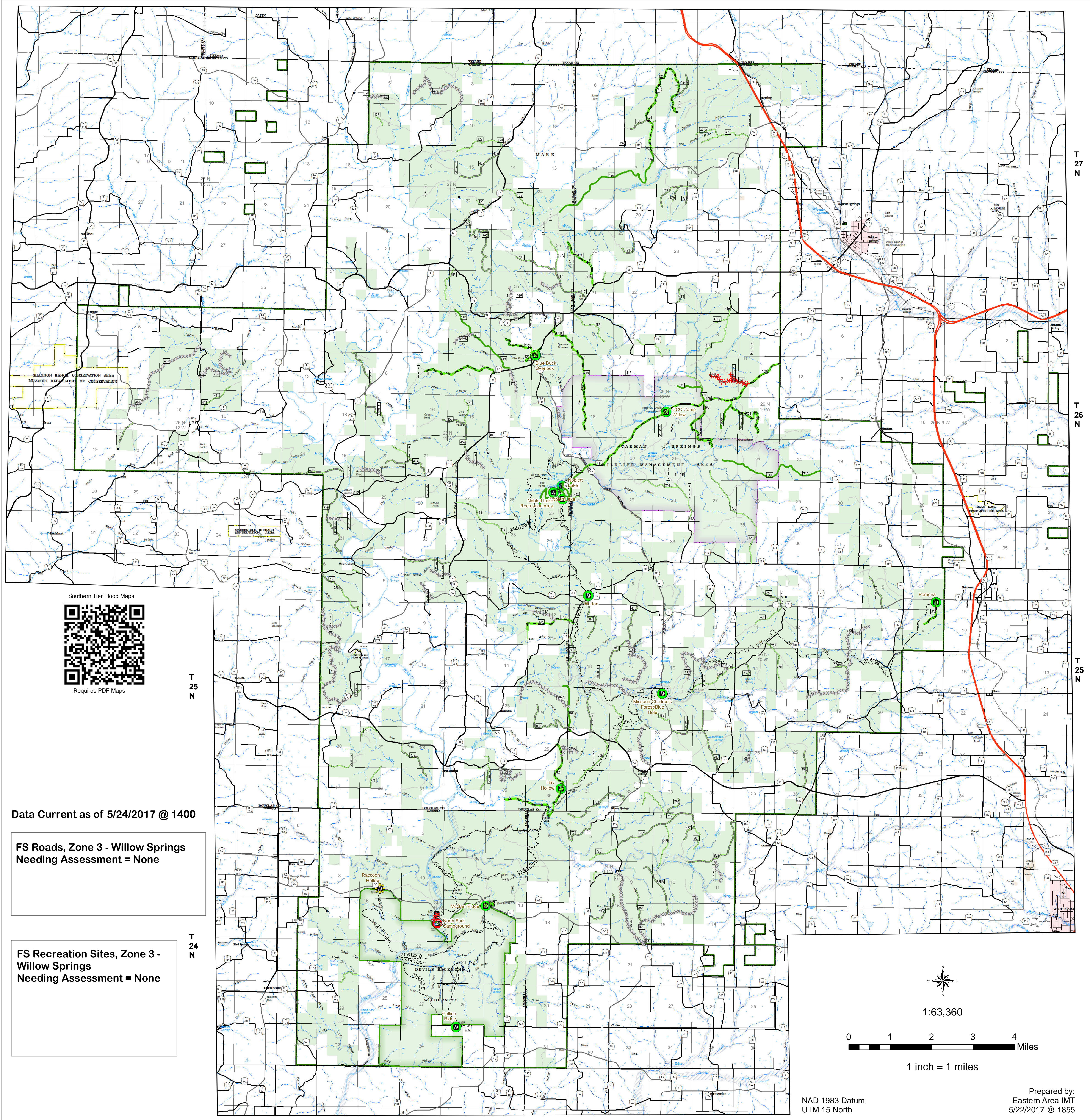
T 26 N

T 26 N

T 25 N

T 25 N

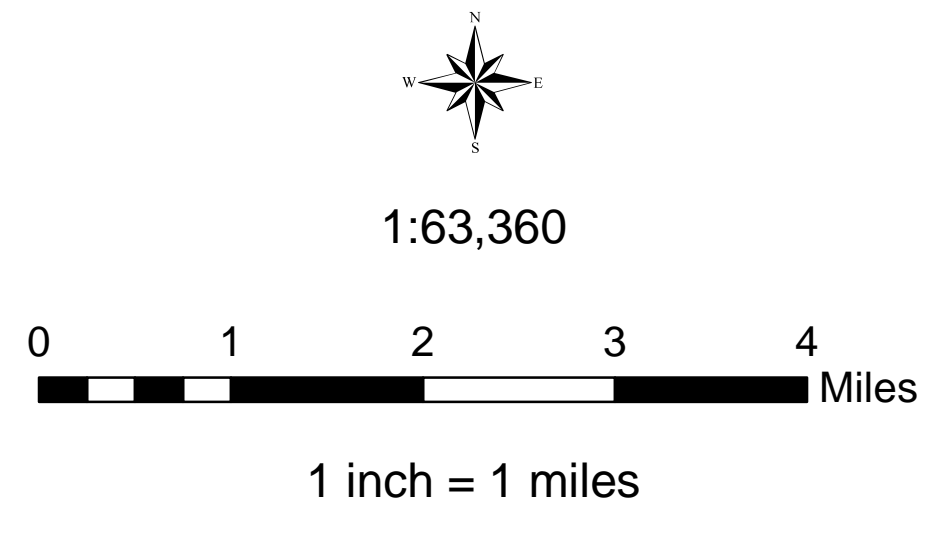
T 24 N



Data Current as of 5/24/2017 @ 1400

FS Roads, Zone 3 - Willow Springs  
Needing Assessment = None

FS Recreation Sites, Zone 3 -  
Willow Springs  
Needing Assessment = None



Prepared by:  
Eastern Area IMT  
5/22/2017 @ 1855

USDA Southern Tier Flood 2017 MO-MTF-170313

## Assessment Map Roads & Recreation Sites

May 25, 2017 0700

Branch One

Division Zone 3  
Willow Springs Ranger District  
Mark Twain National Forest

Assessment Layers		
<b>OML 2 Road Assessment</b>	<b>OML 3 &amp; 4 Road Assessment</b>	<b>Rec Site Assessment</b>
No Damage - 37.1 miles	Unreported - 0 miles	Unreported (0)
Passable with Damage - 42.87 miles	No Damage - 14.91 miles	No Damage (11)
Impassible/Closed - 36.0 miles	Passable with Damage - 25.7 miles	Open/minor damage (1)
	Impassible/Closed - 1.8 miles	Closed/significant damage (1)

Legend		
Campground (2)	Non-Motorized Trail	US Numbered Routes
Trailhead (9)	Gate (31)	Flood Hazard
Observation Site (1)	Barrier (5)	Stream - Intermittent
Interpretive Site (Minor) (1)	<b>OPER_MAINT_LEVEL</b>	Stream - Perennial
Day Use Area (1)	1 - BASIC CUSTODIAL CARE (CLOSED)	Waterfall
Campground (1)	2 - HIGH CLEARANCE VEHICLES	Open Water - Perennial
	3/4 - SUITABLE FOR PASSENGER CARS	Open Water - Intermittent
Missouri Numbered Routes	Missouri Lettered Route	Quarry or Open Pit Mine
County Road	Other Roads	Sand Area
Private Road	Railroad	Strip Mine
		Mark Twain National Forest
		National Wilderness Area
		State/County Special Area
		FS Spec Mgt/Rec Area
		USDA Forest Service