

Assessment Map Trails

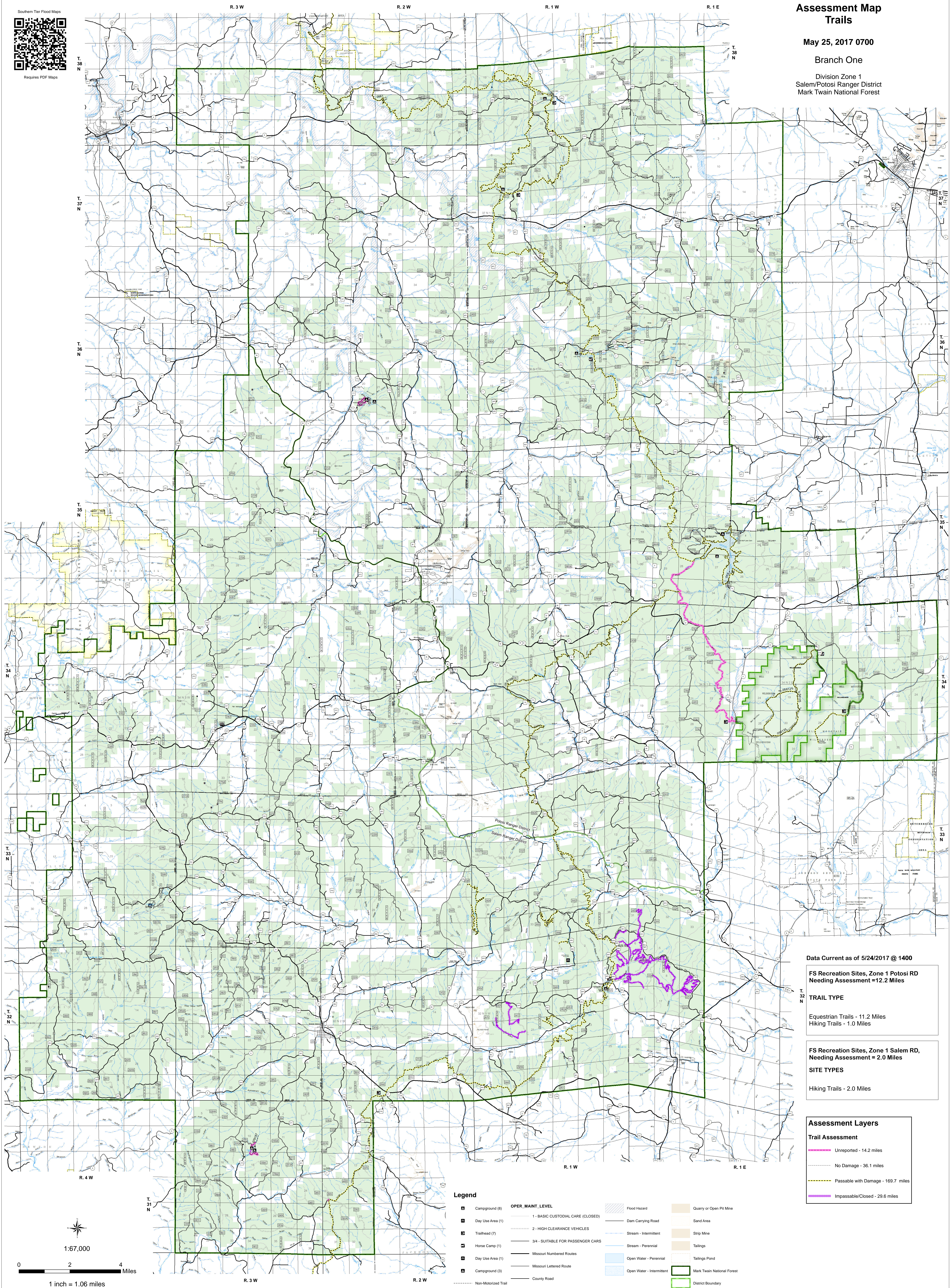
May 25, 2017 0700

Branch One

Division Zone 1
Salem/Potosi Ranger District
Mark Twain National Forest



Requires PDF Maps



Data Current as of 5/24/2017 @ 1400

FS Recreation Sites, Zone 1 Potosi RD
Needing Assessment = 12.2 Miles

TRAIL TYPE

Equestrian Trails - 11.2 Miles
Hiking Trails - 1.0 Miles

FS Recreation Sites, Zone 1 Salem RD,
Needing Assessment = 2.0 Miles

SITE TYPES

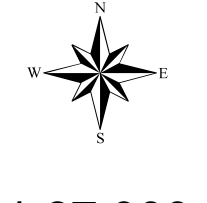
Hiking Trails - 2.0 Miles

Assessment Layers

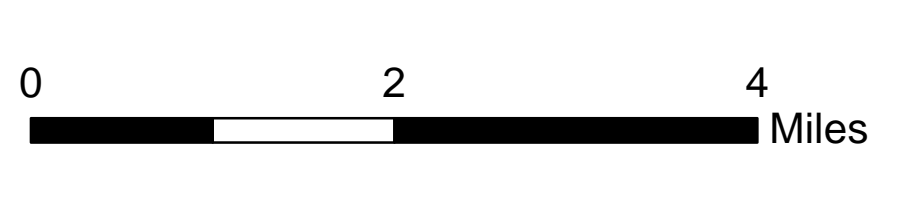
Trail Assessment	
	Unreported - 14.2 miles
	No Damage - 36.1 miles
	Passable with Damage - 169.7 miles
	Impassable/Closed - 29.6 miles

Legend

	Campground (8)		Flood Hazard		Quarry or Open Pit Mine
	Day Use Area (1)		Dam Carrying Road		Sand Area
	Trailhead (7)		Stream - Intermittent		Strip Mine
	Horse Camp (1)		Stream - Perennial		Tailings
	Day Use Area (1)		Open Water - Perennial		Tailings Pond
	Campground (3)		Open Water - Intermittent		Mark Twain National Forest
	Non-Motorized Trail		County Road		District Boundary
	Gate		Other Roads		USDA FOREST SERVICE
	Barrier		Private Road		
			Railroad		



1:67,000



1 inch = 1.06 miles