

R 12 W

R 11 W

R 10 W

R 9 W

T 27 N

T 27 N

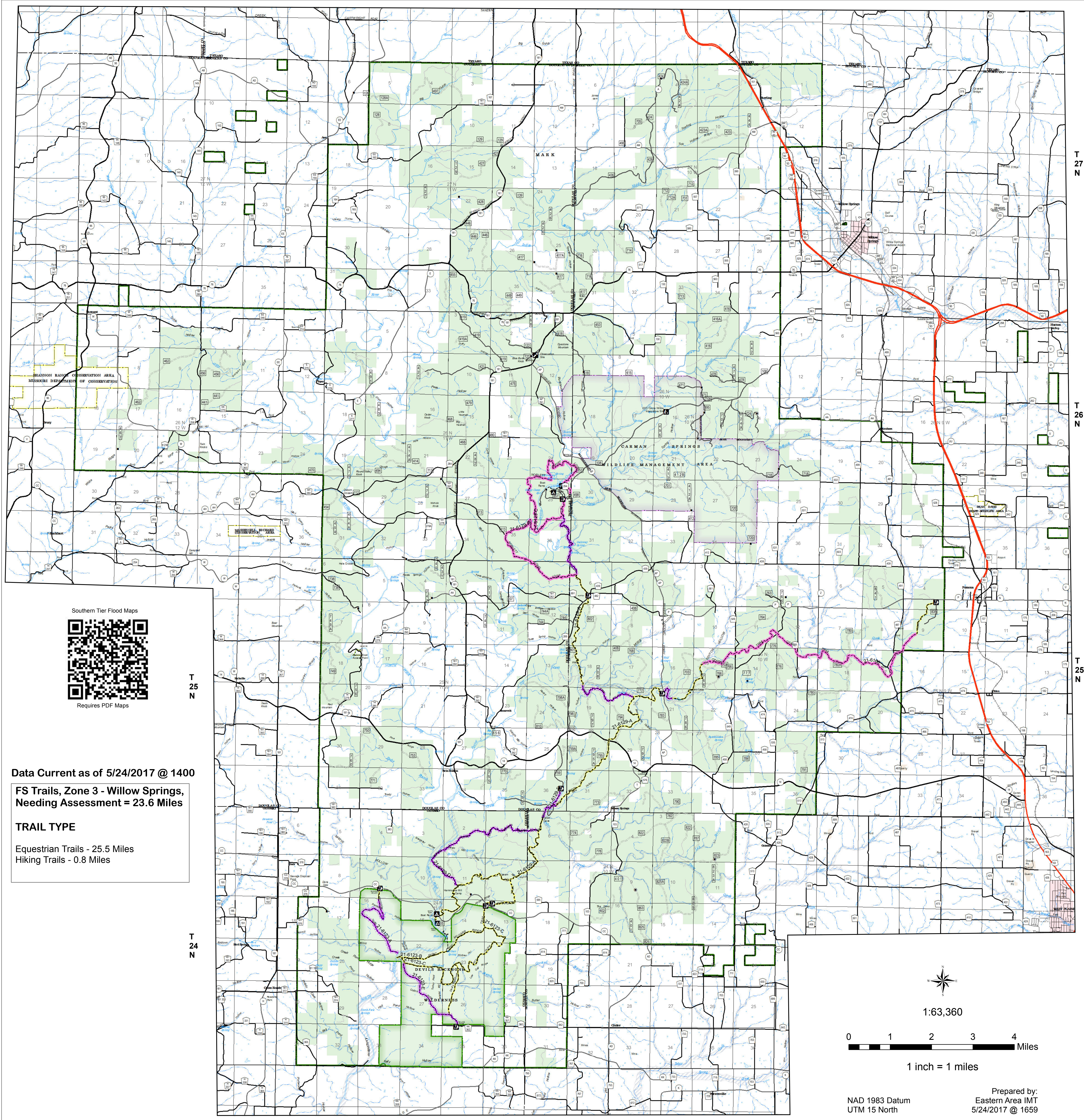
T 26 N

T 26 N

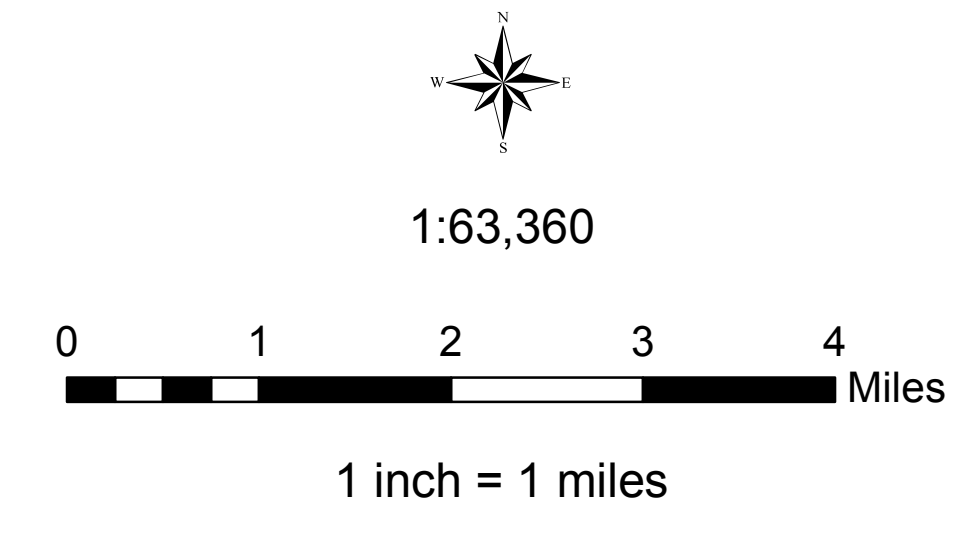
T 25 N

T 25 N

T 24 N



Data Current as of 5/24/2017 @ 1400
FS Trails, Zone 3 - Willow Springs, Needing Assessment = 23.6 Miles
TRAIL TYPE
 Equestrian Trails - 25.5 Miles
 Hiking Trails - 0.8 Miles



Prepared by:
 Eastern Area IMT
 5/24/2017 @ 1659
 NAD 1983 Datum
 UTM 15 North

USDA Southern Tier Flood 2017 MO-MTF-170313 UAS

Assessment Map Trails

May 25, 2017 0700

Branch One
 Division Zone 3
 Willow Springs Ranger District
 Mark Twain National Forest

Assessment Layers

Trail Assessment	
	Unreported - 23.6 miles
	No Damage - 2.3 miles
	Passable with Damage - 56.9 miles
	Impassable/Closed - 26.8 miles

Legend

	Campground (2)		Non-Motorized Trail		US Numbered Routes		Flood Hazard		Quarry or Open Pit Mine
	Trailhead (9)		Gate (31)		Missouri Numbered Routes		Stream - Intermittent		Sand Area
	Observation Site (1)		Barrier (5)		Missouri Lettered Route		Stream - Perennial		Strip Mine
	Interpretive Site (Minor) (1)	OPER_MAINT_LEVEL			County Road		Waterfall		Mark Twain National Forest
	Day Use Area (1)		1 - BASIC CUSTODIAL CARE (CLOSED)		Other Roads		Open Water - Perennial		National Wilderness Area
	Campground (1)		2 - HIGH CLEARANCE VEHICLES		Private Road		Open Water - Intermittent		State/County Special Area
			3/4 - SUITABLE FOR PASSENGER CARS		Railroad				FS Spec Mgt/Rec Area
									USDA Forest Service