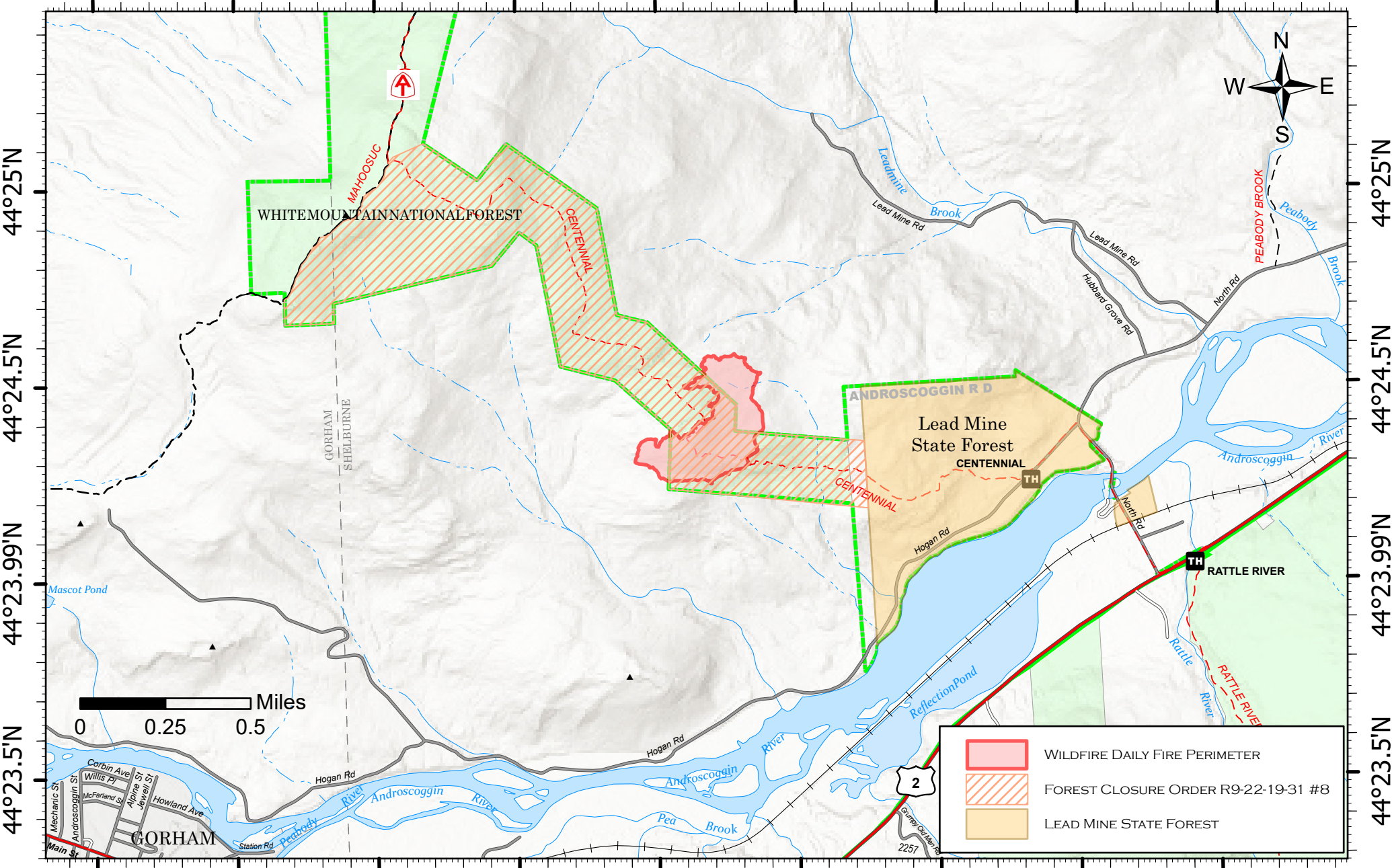





71°10.5'W 71°10'W 71°9.5'W 71°9'W 71°8.5'W 71°8'W 71°7.5'W 71°7'W 71°6.5'W



	WILDFIRE DAILY FIRE PERIMETER
	FOREST CLOSURE ORDER R9-22-19-31 #8
	LEAD MINE STATE FOREST

71°10.5'W 71°10'W 71°9.5'W 71°9'W 71°8.5'W 71°8'W 71°7.5'W 71°7'W 71°6.5'W