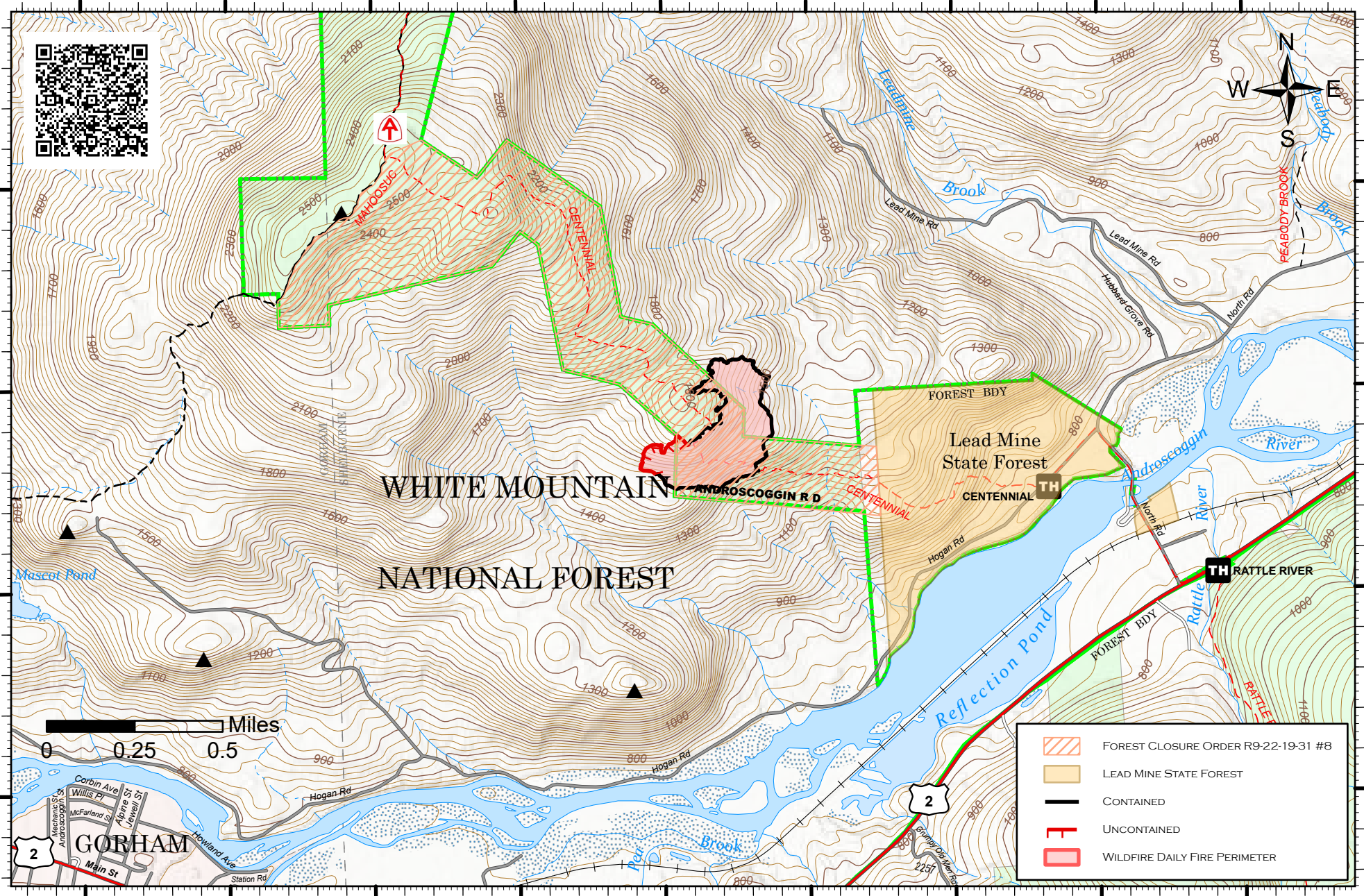







71°10.5'W 71°10'W 71°9.5'W 71°9'W 71°8.5'W 71°8'W 71°7.5'W 71°7'W 71°6.5'W



	FOREST CLOSURE ORDER R9-22-19-31 #8
	LEAD MINE STATE FOREST
	CONTAINED
	UNCONTAINED
	WILDFIRE DAILY FIRE PERIMETER

71°10.5'W 71°10'W 71°9.5'W 71°9'W 71°8.5'W 71°8'W 71°7.5'W 71°7'W 71°6.5'W