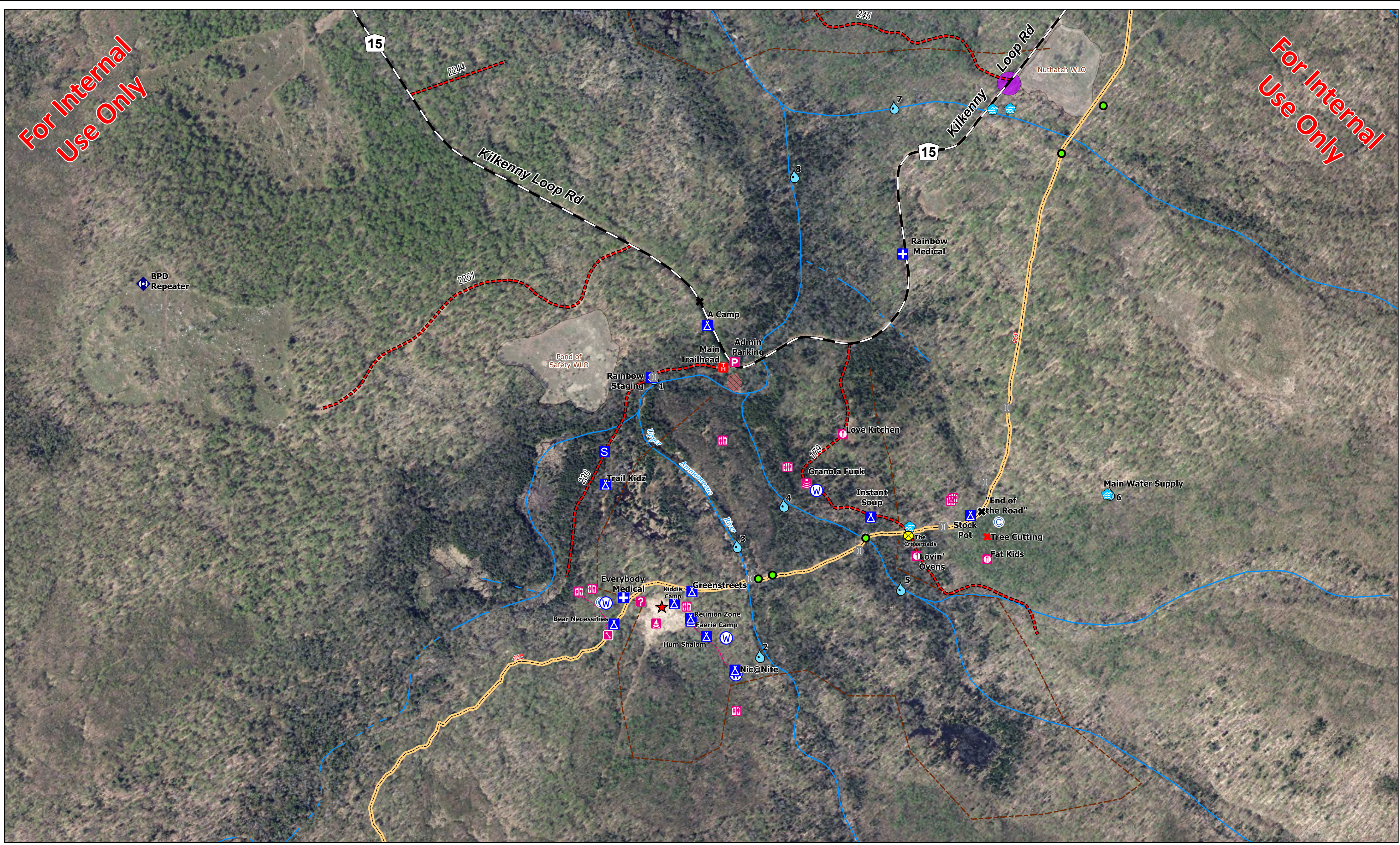


For Internal Use Only

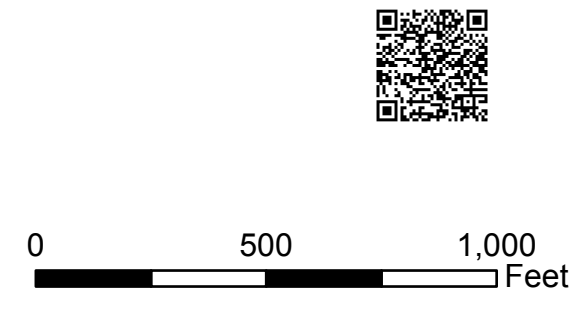
For Internal Use Only



- | | | | |
|--------------------|---------------------------------|---------------------------|----------------------------|
| Bridge | Staging Area | Stage/Theater | Stream/River |
| Camp | Trailhead | Repeater | Stream/River Intermittent |
| Community Fire Pit | Water Development or Draft Site | "End of the Road" | Social Trail |
| Information | Water Sample Location | CrossRoads | Wetlands |
| Kitchen | Water Source | Potential "Workshop" Area | Heritage Avoidance Areas |
| Latrine | Mile Marker | NNIS Sites | RFSS |
| Main Meadow | Observed Resource Damage | Major Roads | Permanent Wildlife Opening |
| Medical | Compost Pit | Closed Roads | |
| Parking | | Snowmobile Trail | |
| | | Dog Trails | |

USDA **Unauthorized Group Use Incident**

White Mountain National Forest
 Androscoggin Ranger District
 Operations Map - Imagery
 June 29, 2023



The USDA Forest Service makes no warranty, expressed or implied, including the warranties of merchantability and fitness for a particular purpose, nor assumes any legal liability or responsibility for the accuracy, reliability, completeness or utility of these geospatial data, or for the improper or incorrect use of these geospatial data. These geospatial data and related maps or graphics are not legal documents and are not intended to be used as such. The data and maps may not be used to determine title, ownership, legal descriptions or boundaries, legal jurisdiction, or restrictions that may be in place on either public or private land. Natural hazards may or may not be depicted on the data and maps, and users should exercise due caution. The data are dynamic and may change over time. The user is responsible to verify the limitations of the geospatial data and to use the data accordingly.