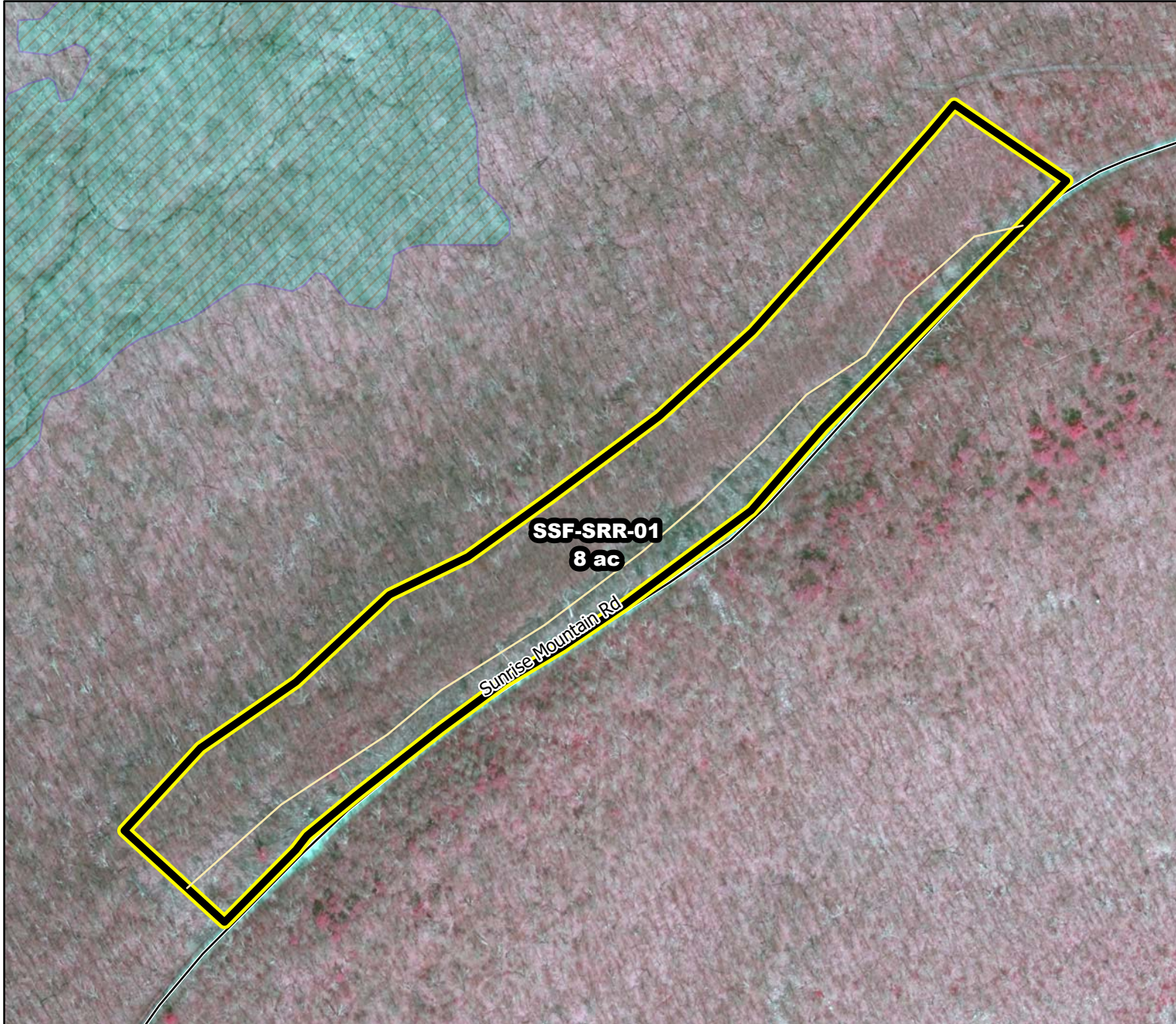




Prescribed Burning LMR Determinations

Last Approved Year:
2023



SSF-SRR-01

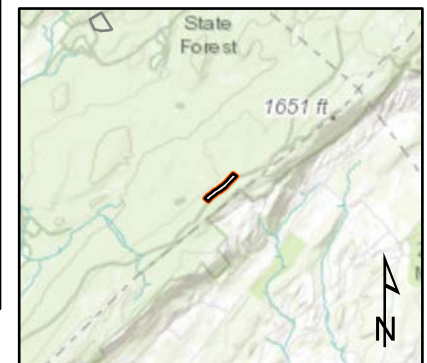
**Conditionally
Approved**

ONLM COMMENTS:
2018: Caution: RxB unit on steep slopes, immediately below population of American Mountain ash on ridgetop.

ENSP COMMENTS:
Burn 11/15-3/15 - SNAKES

HPO COMMENTS:
no response

SFS COMMENTS:
no comment



Proposed units Existing lines Wetlands

300 ft

MTC, NJFFS
2021.01.05