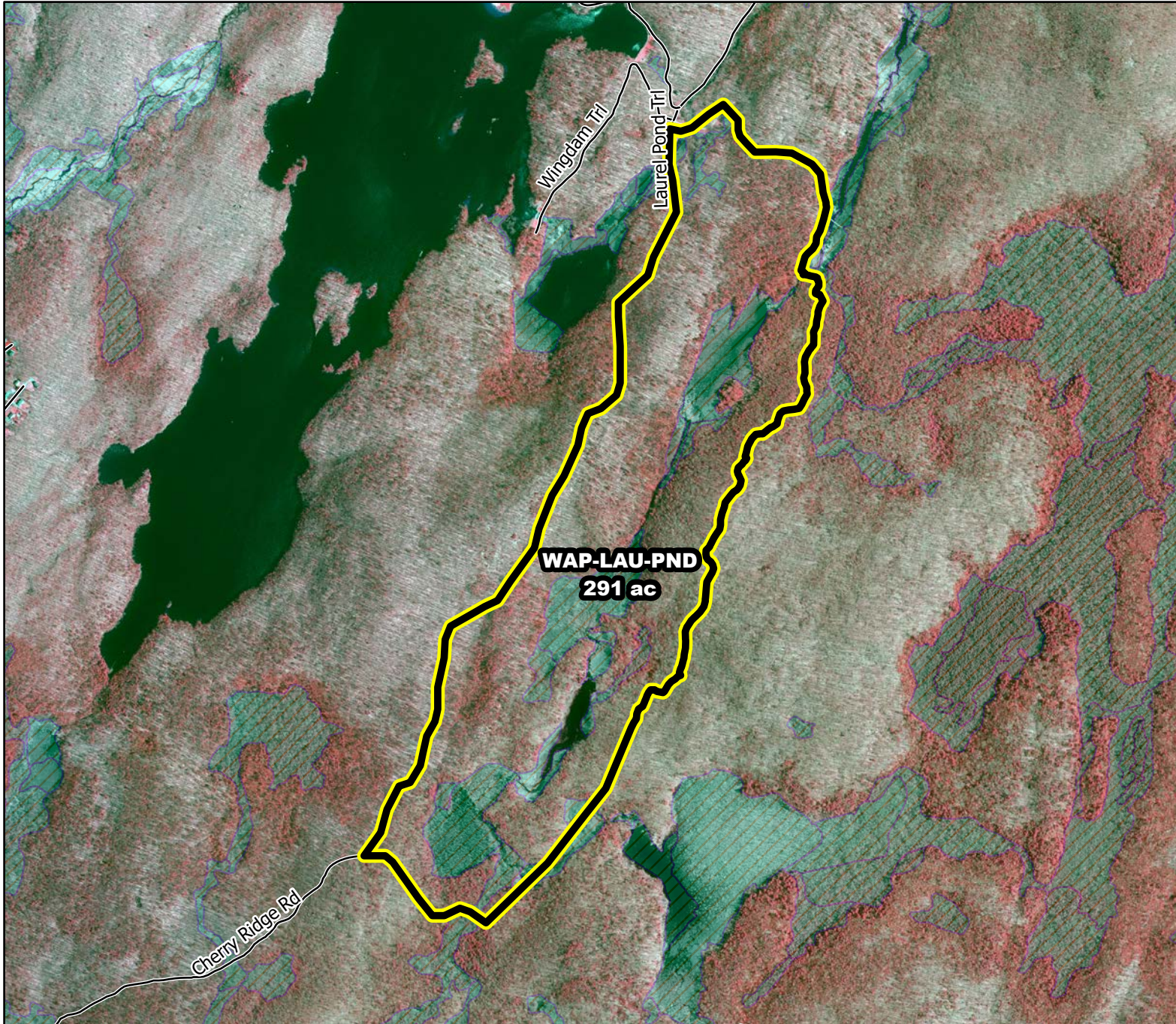




# Prescribed Burning LMR Determinations

Last Approved Year:  
**2023**



## WAP-LAU-PND

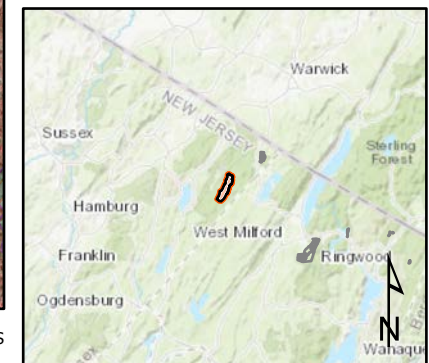
**Conditionally  
Approved**

**ONLM COMMENTS:**  
2018: Exclude RxB from 4.7 ac WAP-LAU-PND-X; black lining ok from the W and SW edges of Calla wetland (do not burn to stream bank); Recommend low intensity RxB due to fire sensitive hemlock & wetland areas.

**ENSP COMMENTS:**  
Herp and avian concerns - Burn 11/15 through 3/15, with possible extension until 3/31 with an ecological justification

**HPO COMMENTS:**  
no comment

**SFS COMMENTS:**  
Other LMR constraints are met



Proposed units Wetlands

1,200 ft

MTC, NJFFS  
20210106