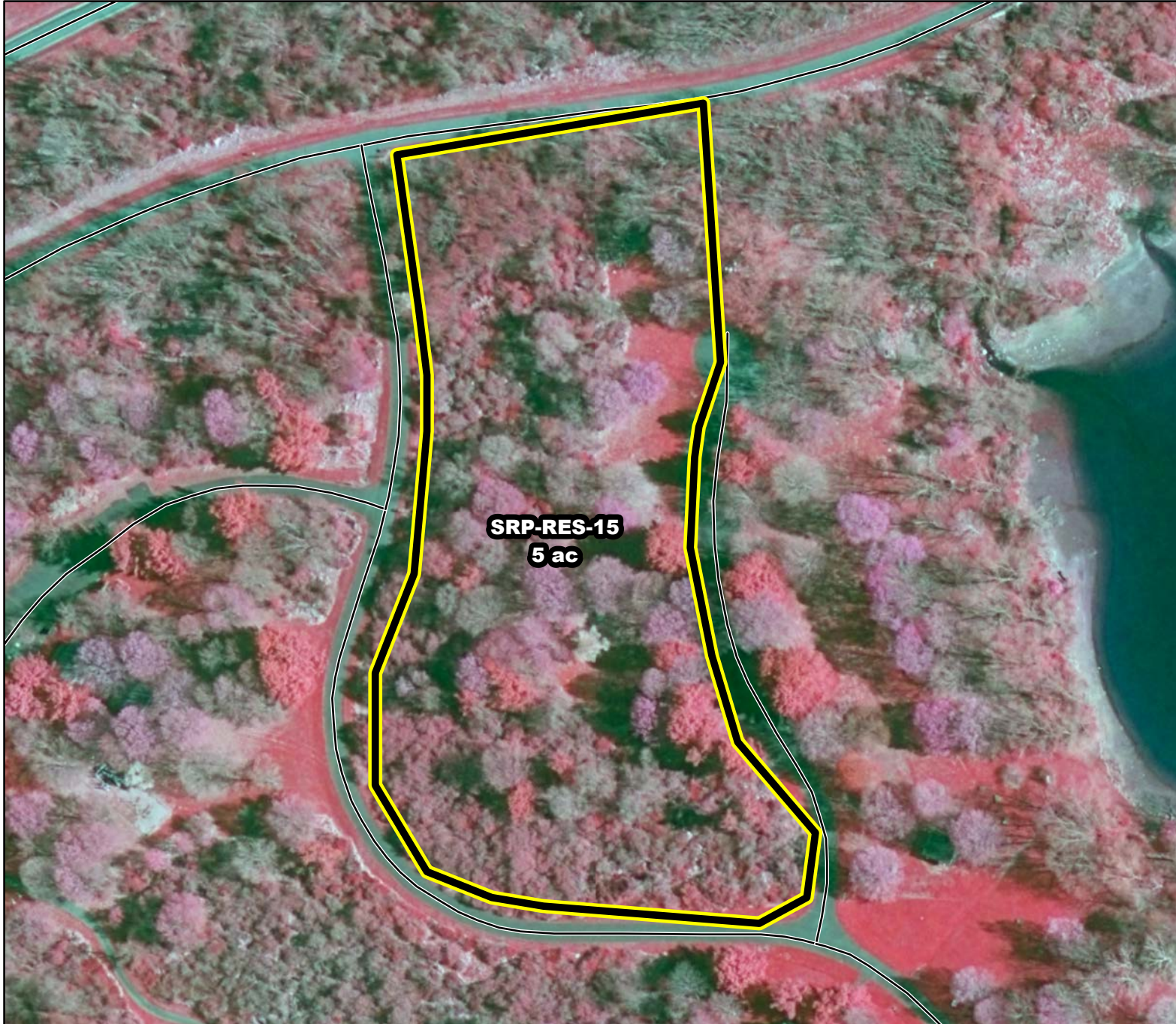




Prescribed Burning LMR Determinations

Last Approved Year:
2024



SRP-RES-15

Approved


ONLM COMMENTS:
no comment

ENSP COMMENTS:
no comment

HPO COMMENTS:
archaeological sensitivity
along Spruce Run

SFS COMMENTS:
no comment



 Proposed units

120 ft

MTC, NJFFS
20210105