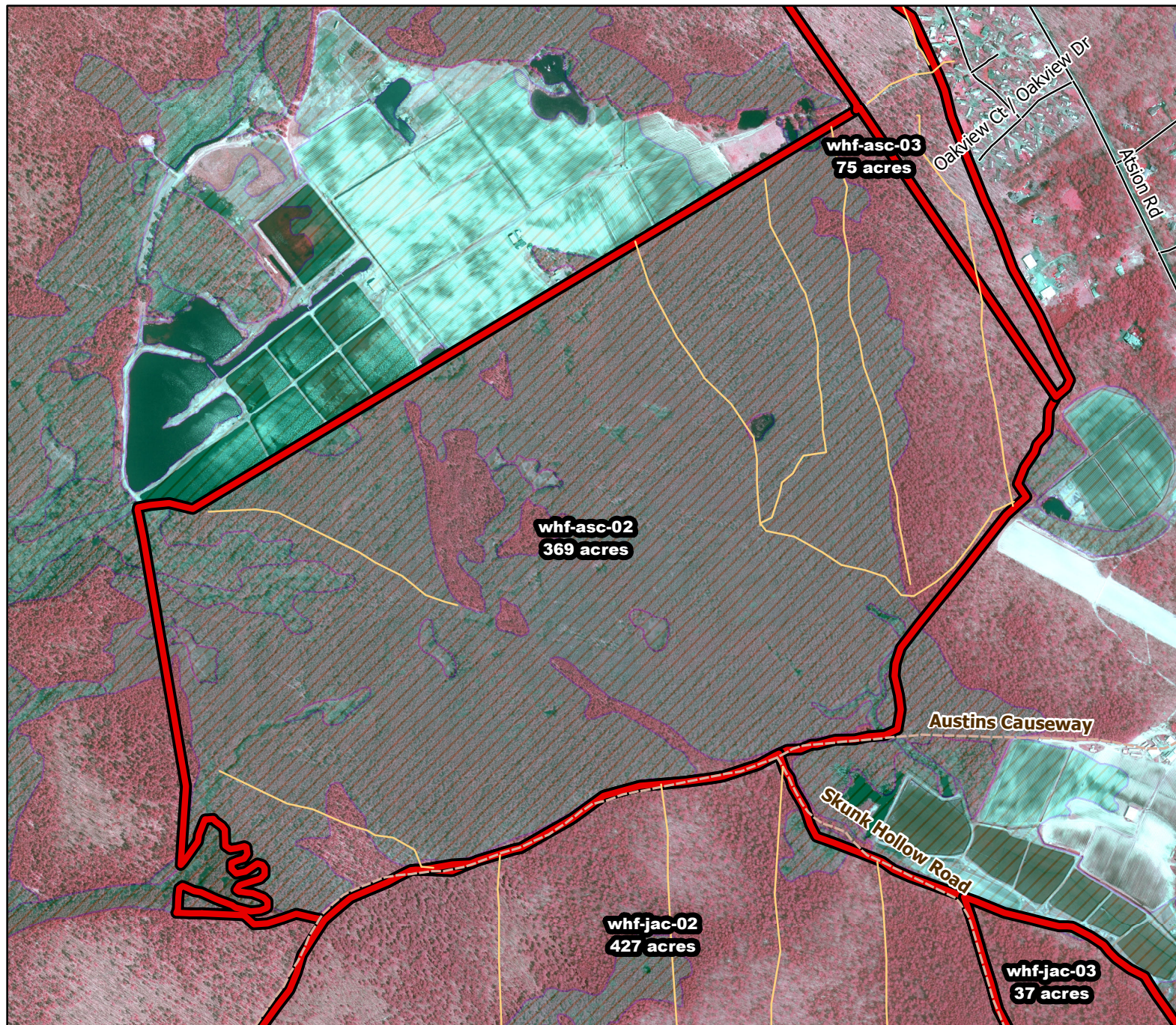




2019/2020 Season Prescribed Burning LMR Determinations - LMR ID 19-049



whf-asc-02

Approved

ONLM COMMENTS:

Recommend mixed intensity RxB to maintain pine lowlands

HPO COMMENTS:

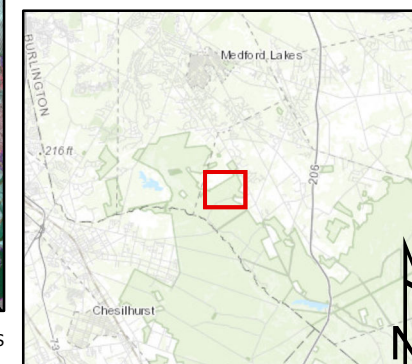
low sensitivity due to wetlands

SFS COMMENTS:

no comment

ENSP COMMENTS:

no comment



Proposed units Existing lines Woods Roads Wetlands

900 ft MTC, NJFFS 2019.1127