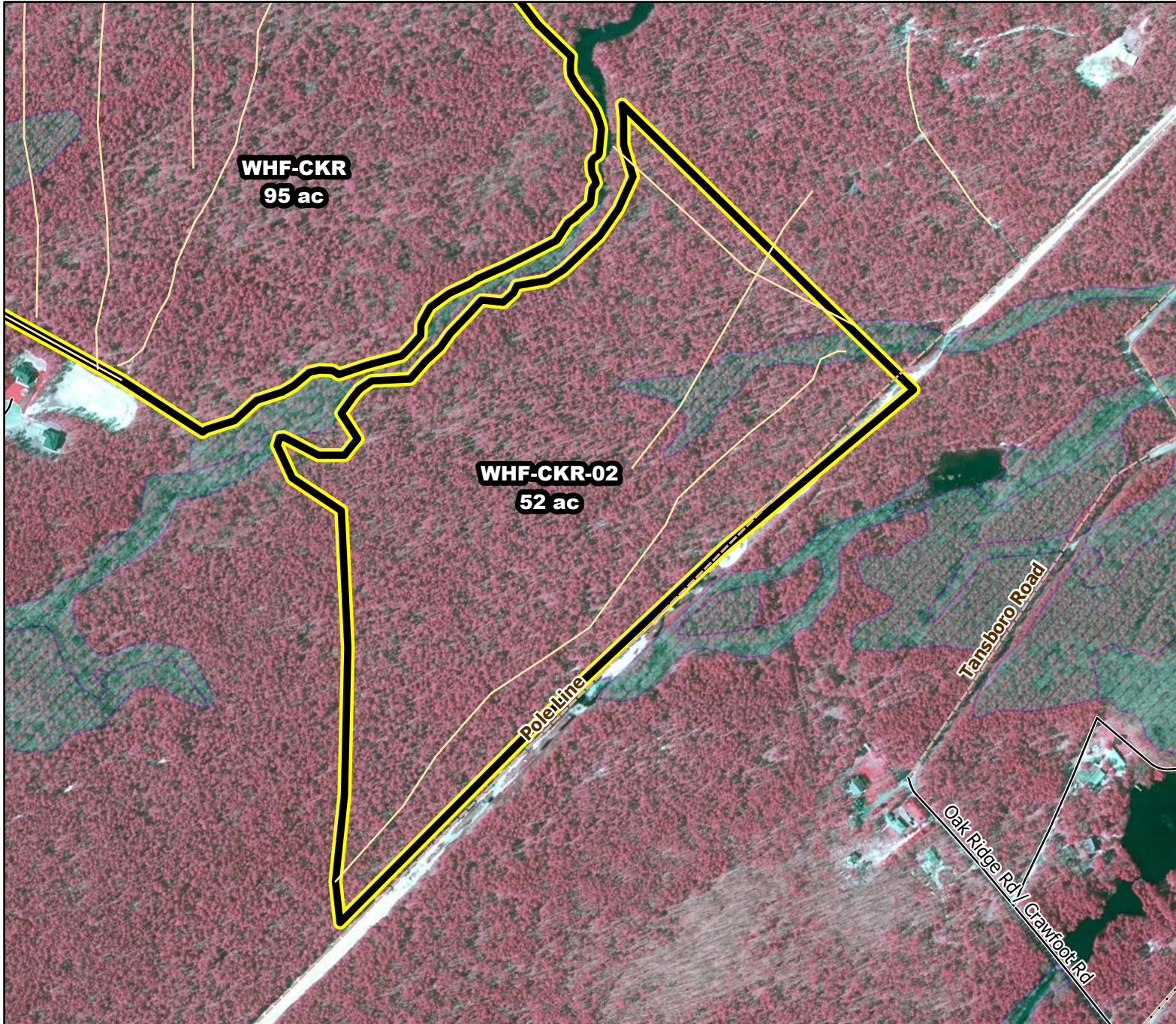




Prescribed Burning LMR Determinations

Last Approved Year:
2023



WHF-CKR-02

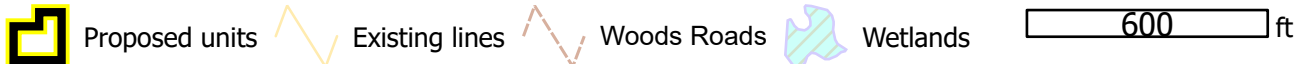
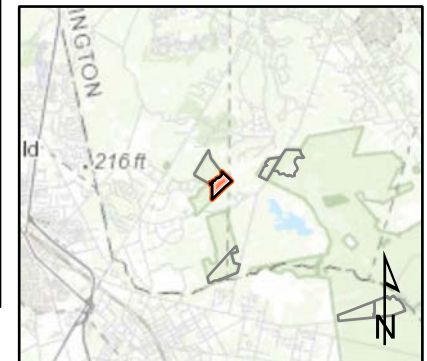
**Conditionally
Approved**

ONLM COMMENTS:
2018: Resolved; RxB unit excludes Kettle Run swamp, which supports swamp pink; use caution while working around swamp pink population

ENSP COMMENTS:
Herp concerns - Burn 11/15 though 3/15

HPO COMMENTS:
no comment

SFS COMMENTS:
no comment



MTC, NJFFS
2021.01.05