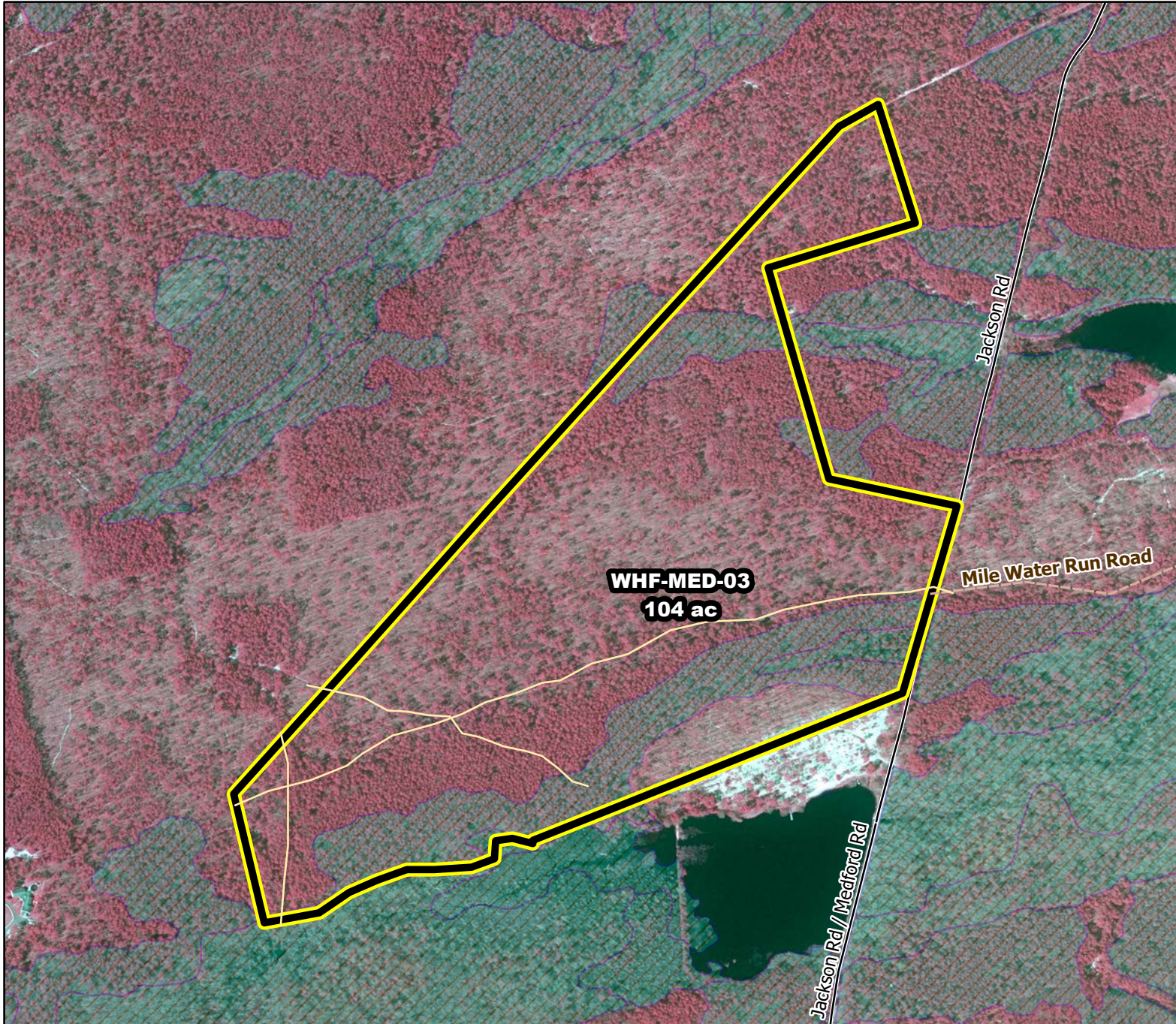




Prescribed Burning LMR Determinations

Last Approved Year:
2023



WHF-MED-03

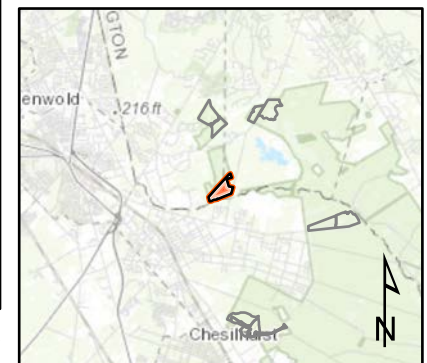
**Conditionally
Approved**

ONLM COMMENTS:
2018: Avoid plowlines in swamps/lowlands. Recommend low intensity RxB in OP/PO and mixed intensity in pine barrens & pine lowlands.

ENSP COMMENTS:
Burn 11/15-3/15 (flex to 3/31)

HPO COMMENTS:
no response

SFS COMMENTS:
no comment



MTC, NJFFS
2021.01.05