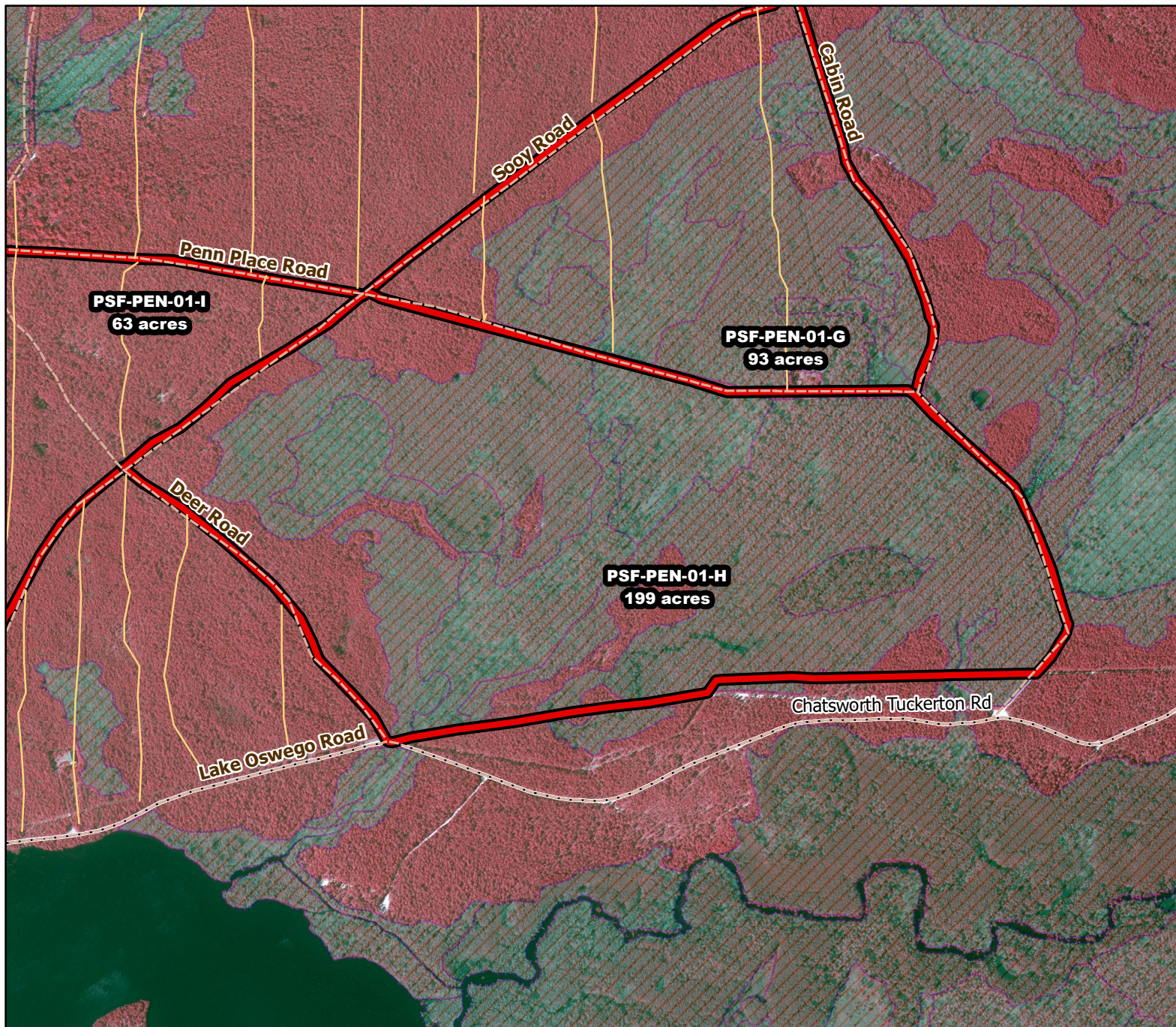




# 2019/2020 Season Prescribed Burning LMR Determinations - LMR ID 19-049



## **PSF-PEN-01-H**

**Approved**

### **ONLM COMMENTS:**

Recommend mixed intensity RxB to maintain pine barrens and pine lowlands

### **HPO COMMENTS:**

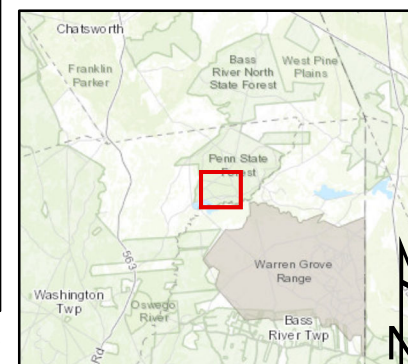
some archaeological sensitivity along southern edge

### **SFS COMMENTS:**

no comment

### **ENSP COMMENTS:**

no comment



Proposed units



Existing lines



Woods Roads



Wetlands

600 ft

MTC, NJFFS  
20191127