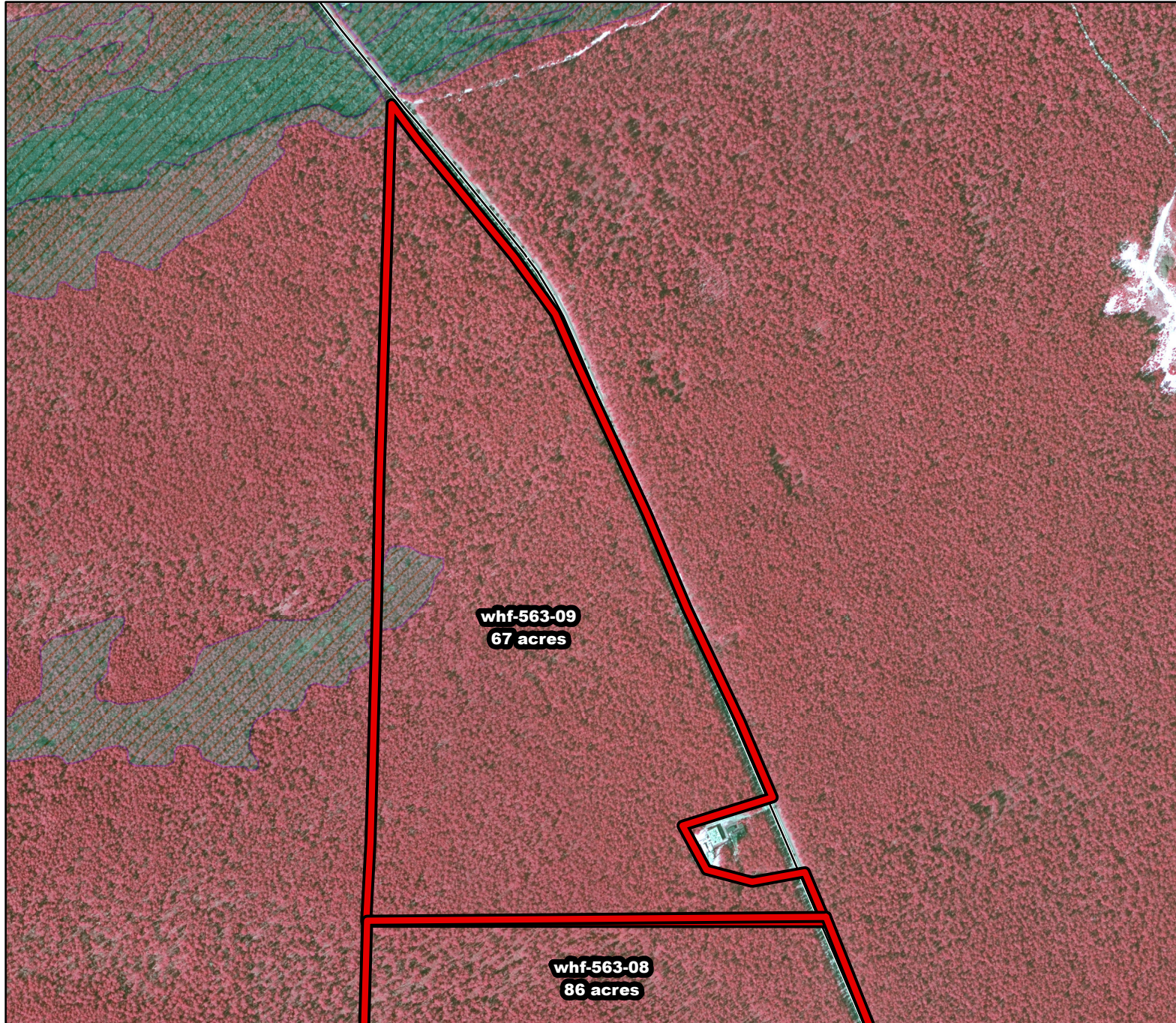




2019/2020 Season Prescribed Burning LMR Determinations - LMR ID 19-049



whf-563-09

Approved

ONLM COMMENTS:

Recommend mixed intensity RxB to maintain pine barrens

HPO COMMENTS:

some archaeological sensitivity northern limit

SFS COMMENTS:

no comment

ENSP COMMENTS:

no comment



Proposed units



Wetlands

300 ft

MTC, NJFFS
20191127