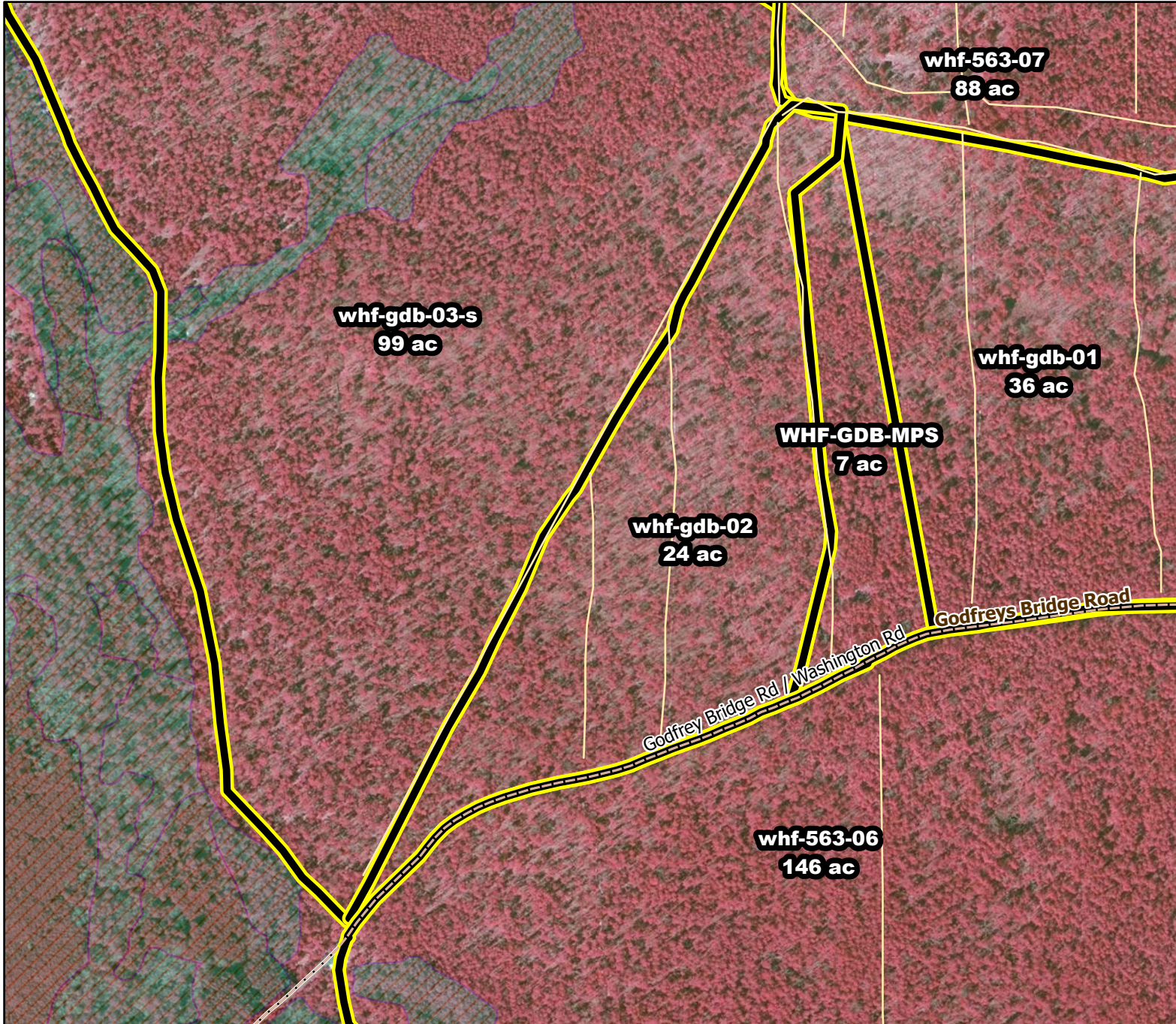




# 2020/2021 Season Prescribed Burning LMR Determinations - LMR ID 20-072



## whf-gdb-02

**Approved**

### **ONLM COMMENTS:**

Recommend low-mod intensity RxB in OP/PO/POW areas to avoid tree oak impacts

### **ENSP COMMENTS:**

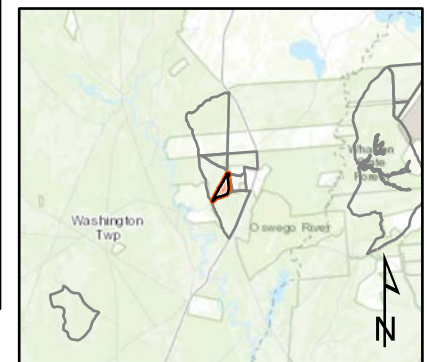
no comment

### **HPO COMMENTS:**

no response

### **SFS COMMENTS:**

no comment



MTC, NJFFS  
20201221