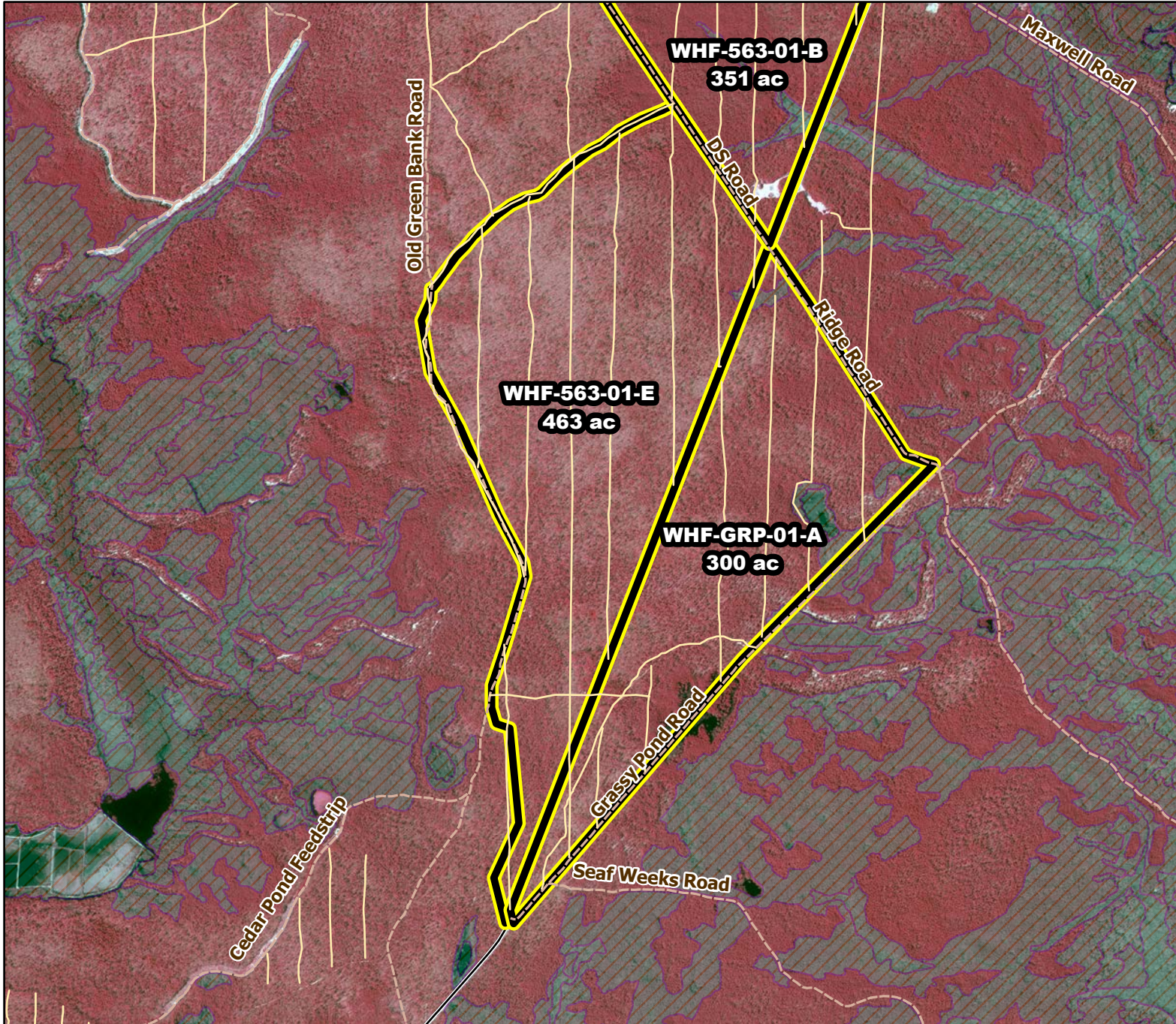




Prescribed Burning LMR Determinations

Last Approved Year:
2023



WHF-563-01-E

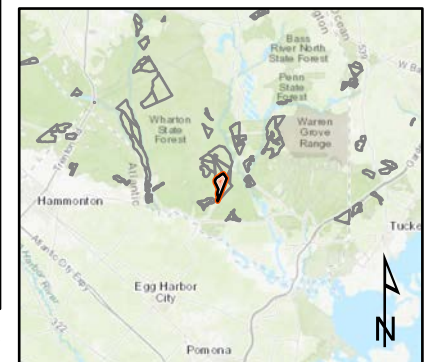
Conditionally Approved

ONLM COMMENTS:
2018: Recommend low intensity RxB to maintain tree oaks in OP/PO; In WHF-563-01-A Recommend low intensity RxB to maintain OP/PO and old field shortleaf pine stand. Note: Old house site has rare plant grass-leaf lettuce (*Lactuca graminifolia*),

ENSP COMMENTS:
NOVEMBER 15th TO MARCH 15th ONLY, NO EXTENSION POSSIBLE (T&E CONFLICT)" EXTENSION POSSIBLE (T&E CONFLICT)

HPO COMMENTS:
no comment

SFS COMMENTS:
no comment



MTC, NJFFS
2021.01.06