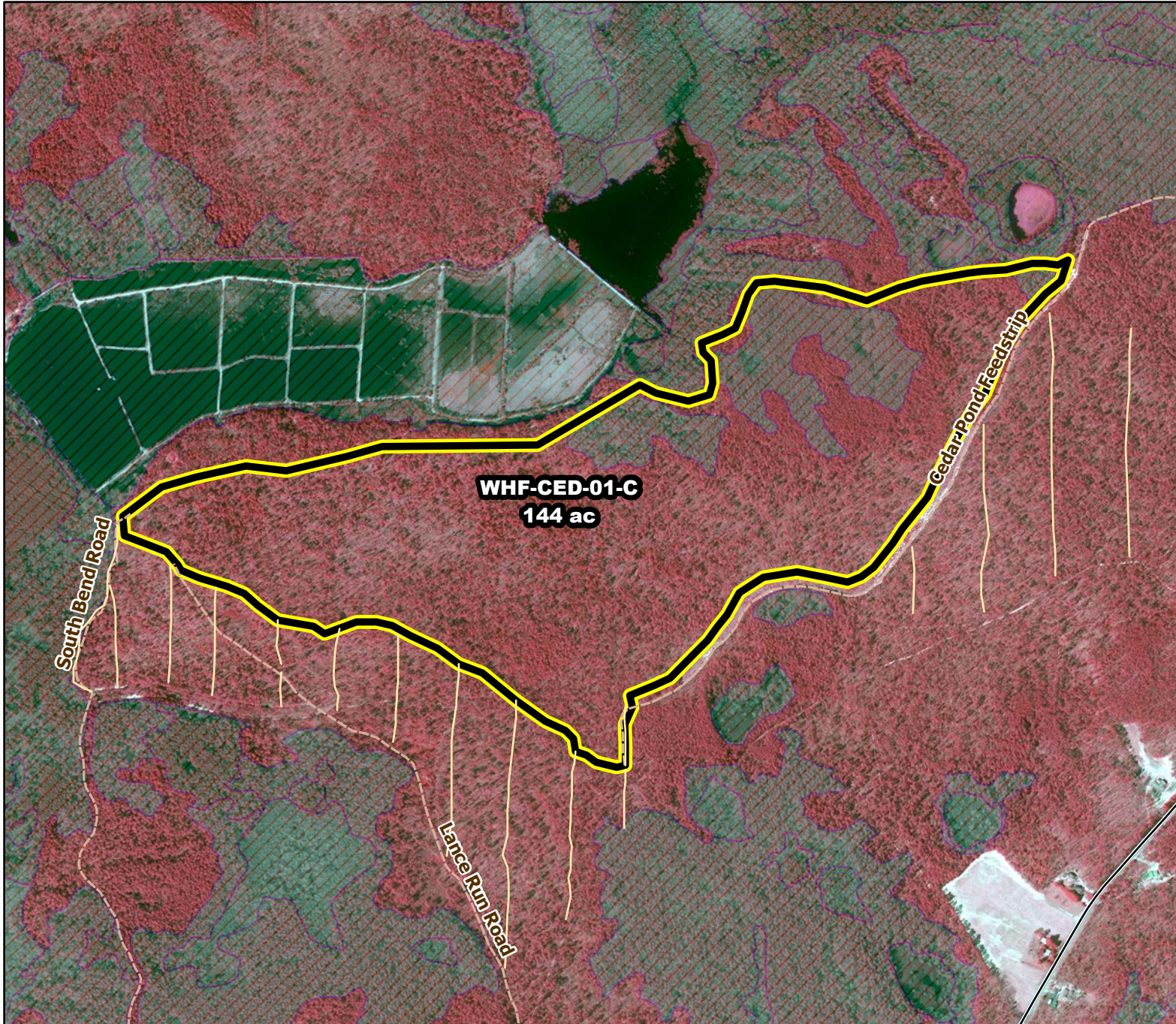




Prescribed Burning LMR Determinations

Last Approved Year:
2023



WHF-CED-01-C

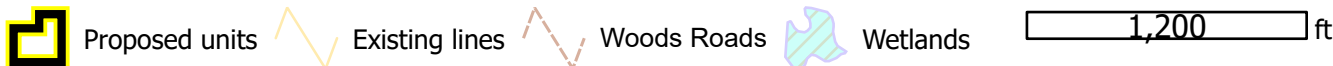
**Conditionally
Approved**

ONLM COMMENTS:
2018: Avoid grading road on paleodune hills along N & SW edges of unit; Block or abandon plowlines crossing pine lowlands after use.- Recommend low intensity RxB to maintain tree oaks in OP/PO; In Unit WHF-CED-01-D:

ENSP COMMENTS:
NOVEMBER 15th TO MARCH 15th, NEED WRITTEN JUSTIFICATION FOR APRIL 1ST EXTENSION

HPO COMMENTS:
no comment

SFS COMMENTS:
no comment



MTC, NJFFS
2021.01.06