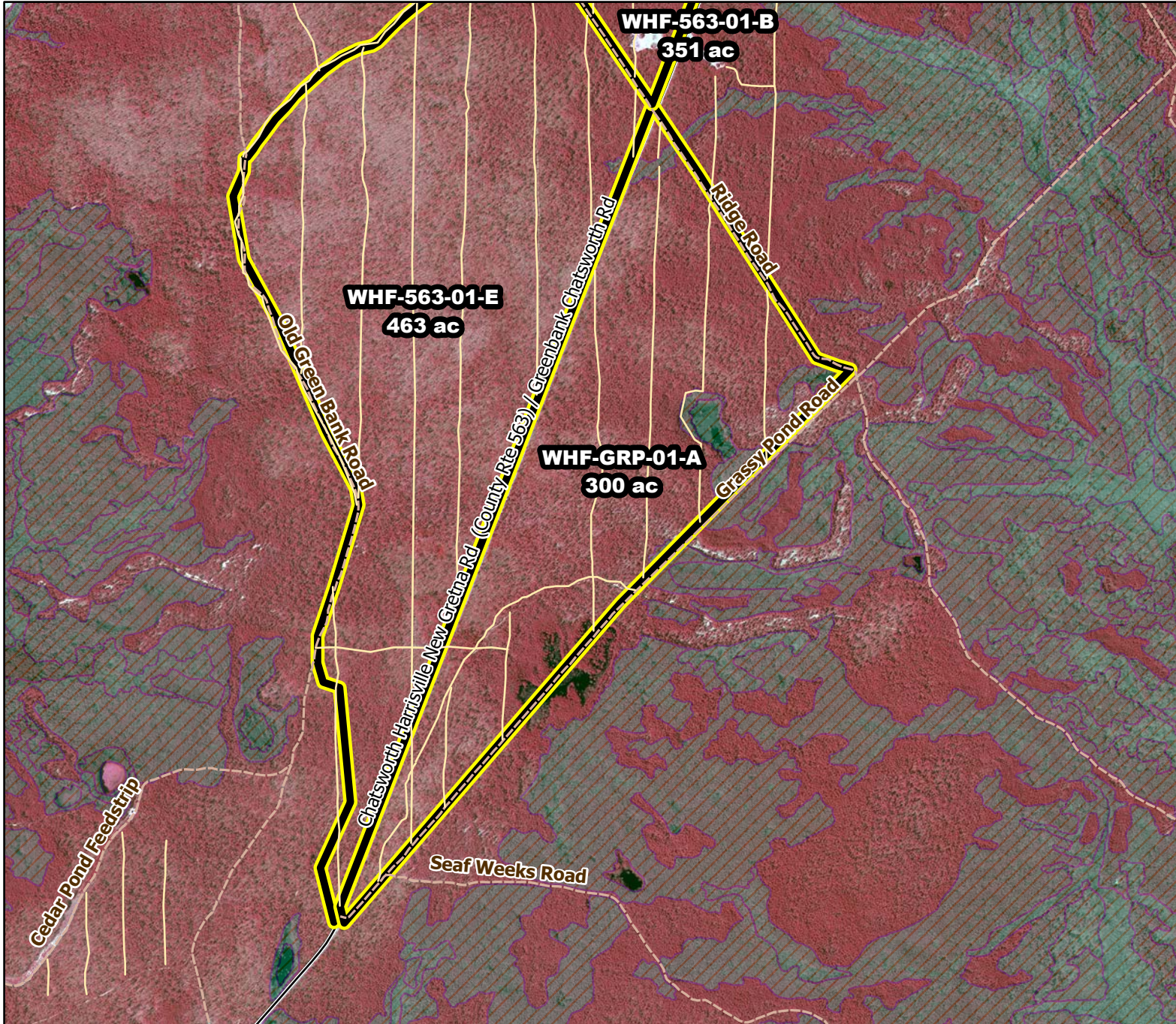




Prescribed Burning LMR Determinations

Last Approved Year:
2023



WHF-GRP-01-A

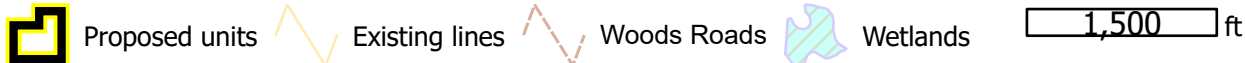
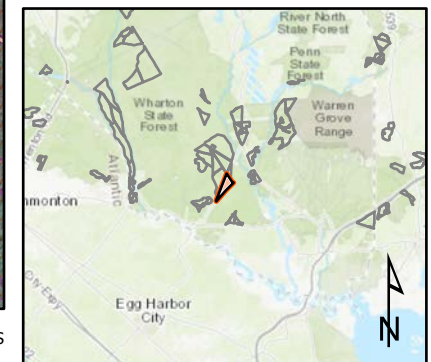
**Conditionally
Approved**

ONLM COMMENTS:
2018: WHF-GRP-01-A
AAbandon plowline crossing
intermittent pond; block
plowlines crossing
paleodunes after use;
Recommend mixed intensity
RxB in pine barrens (POw), &
low intensity in OP/PO along
Rt 563; in WHF-GRP-01-B

ENSP COMMENTS:
NOVEMBER 15th TO
MARCH 15th ONLY, NO
EXTENSION POSSIBLE
(T&E CONFLICT)"
EXTENSION POSSIBLE
(T&E CONFLICT)

HPO COMMENTS:
no comment

SFS COMMENTS:
no comment



MTC, NJFFS
2021.01.06