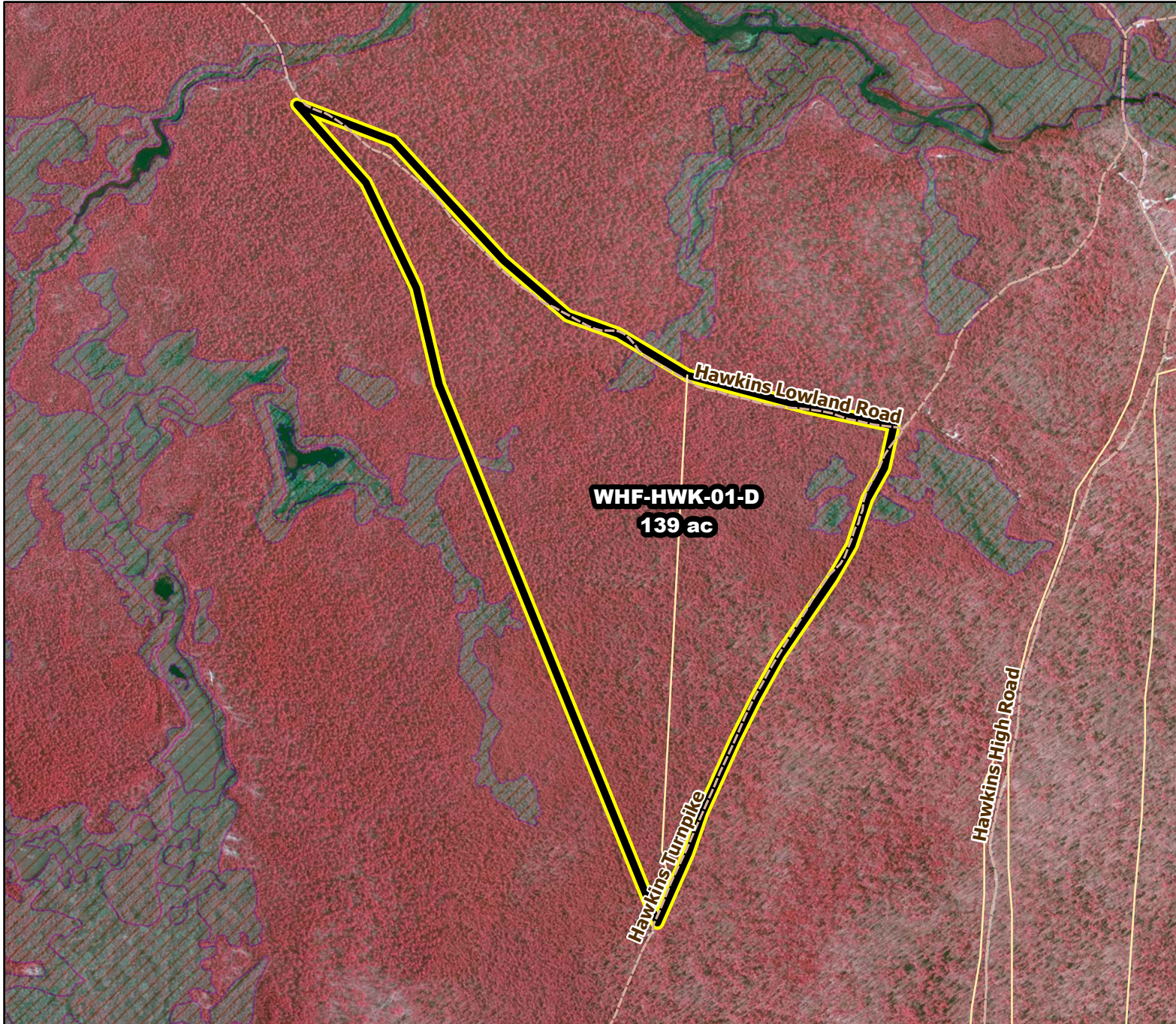




Prescribed Burning LMR Determinations

Last Approved Year:
2023



WHF-HWK-01-D

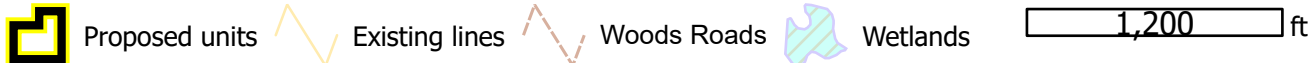
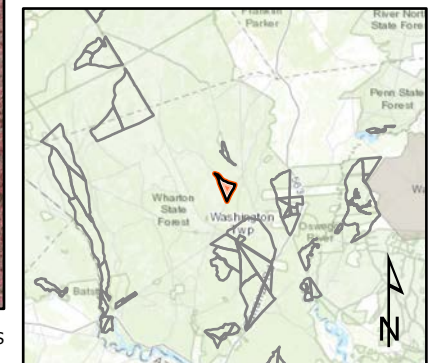
**Conditionally
Approved**

ONLM COMMENTS:
2018: Recommend low intensity RxB to maintain tree oaks in OP/PO; In Unit WHF-HWK-01-D: Recommend mixed intensity RxB to open pine canopy in pine uplands, pine lowlands (PL & PL7), pitch pine-shrub oak barrens and paleodunes.

ENSP COMMENTS:
Restrict burns to Nov. 15 – March 15 to avoid adverse impacts to E&T species. Pls contact Kris Schantz prior to burn w/ anticipated burn dates to facilitate ENSP post-burn survey work. Abandon PL's?; NEED WRITTEN JUSTIFICATION

HPO COMMENTS:
no comment

SFS COMMENTS:
no comment



MTC, NJFFS
2021.01.06