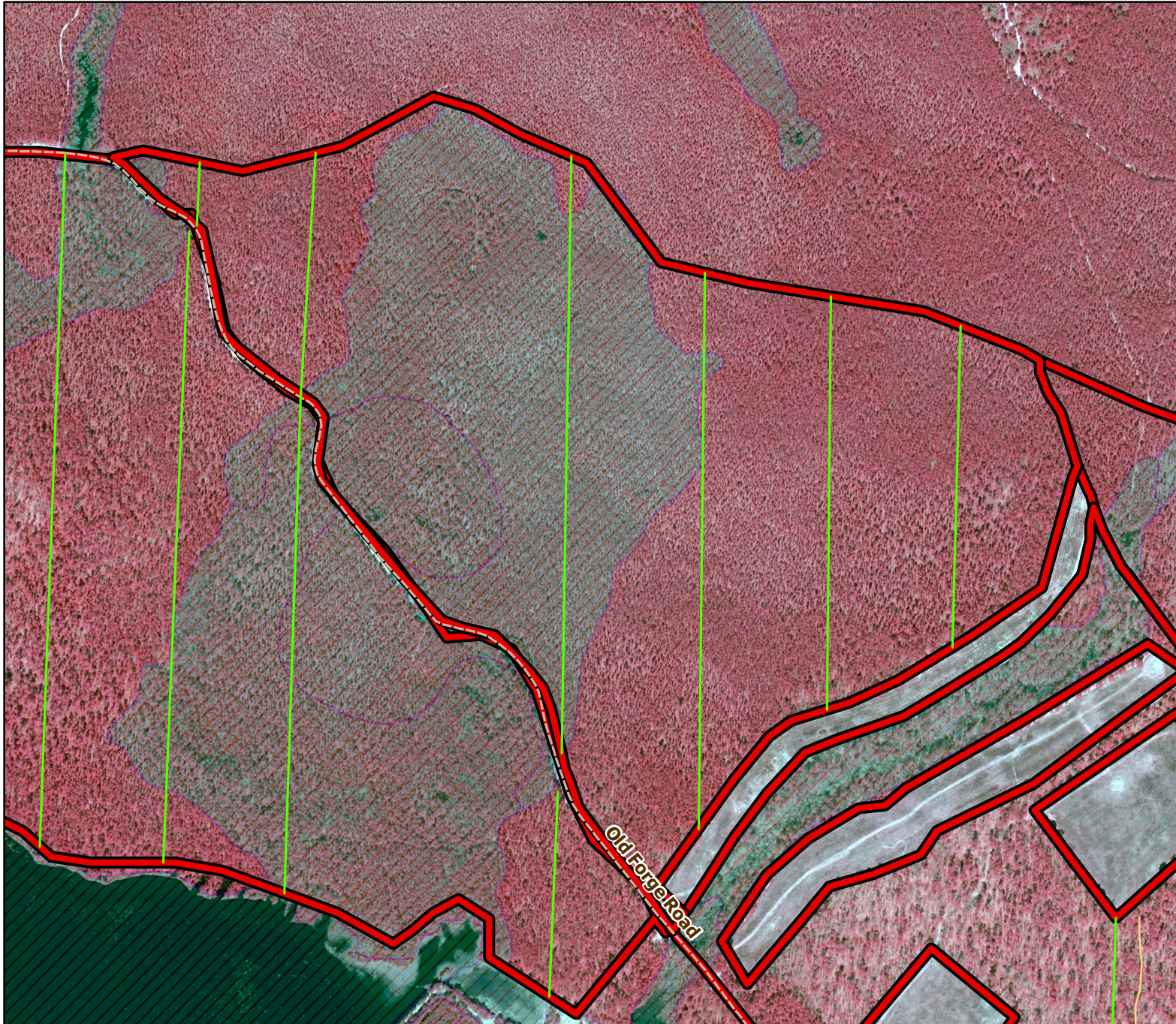




2019/2020 Season Prescribed Burning LMR Determinations - LMR ID 19-049*



SFW-3FT-01-A **Conditionally Approved**

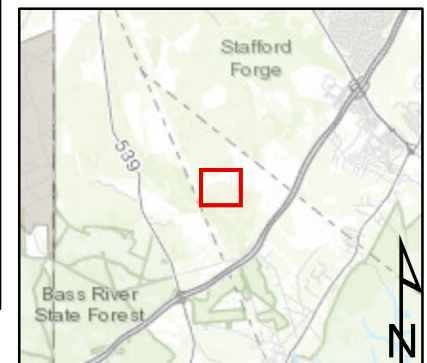
ONLM COMMENTS:
2019: Use revised polygon; 01A with PL & Pb4/5 last burned by crowning RxB in 2008; recommend high-mixed intensity RxB; avoid grading Knieskern's beaked rush in wet road bed & shoulders along SW edge
2020: line through wetlands omitted; additional approval required for roadwork (impacts to beaked rush)

ENSP COMMENTS:
2019: Herp concerns - Burn 11/15 through 3/15, with possible extension until 3/31 with an ecological justification

SFS COMMENTS: none

HPO COMMENTS: none

*Only plow lines were reviewed in LMR 19-049. Unit was approved for 2018/2019 season.



Approved *new* lines Existing lines Approved unit Woods Roads Wetlands 300 ft MTC, NJFFS 20200104