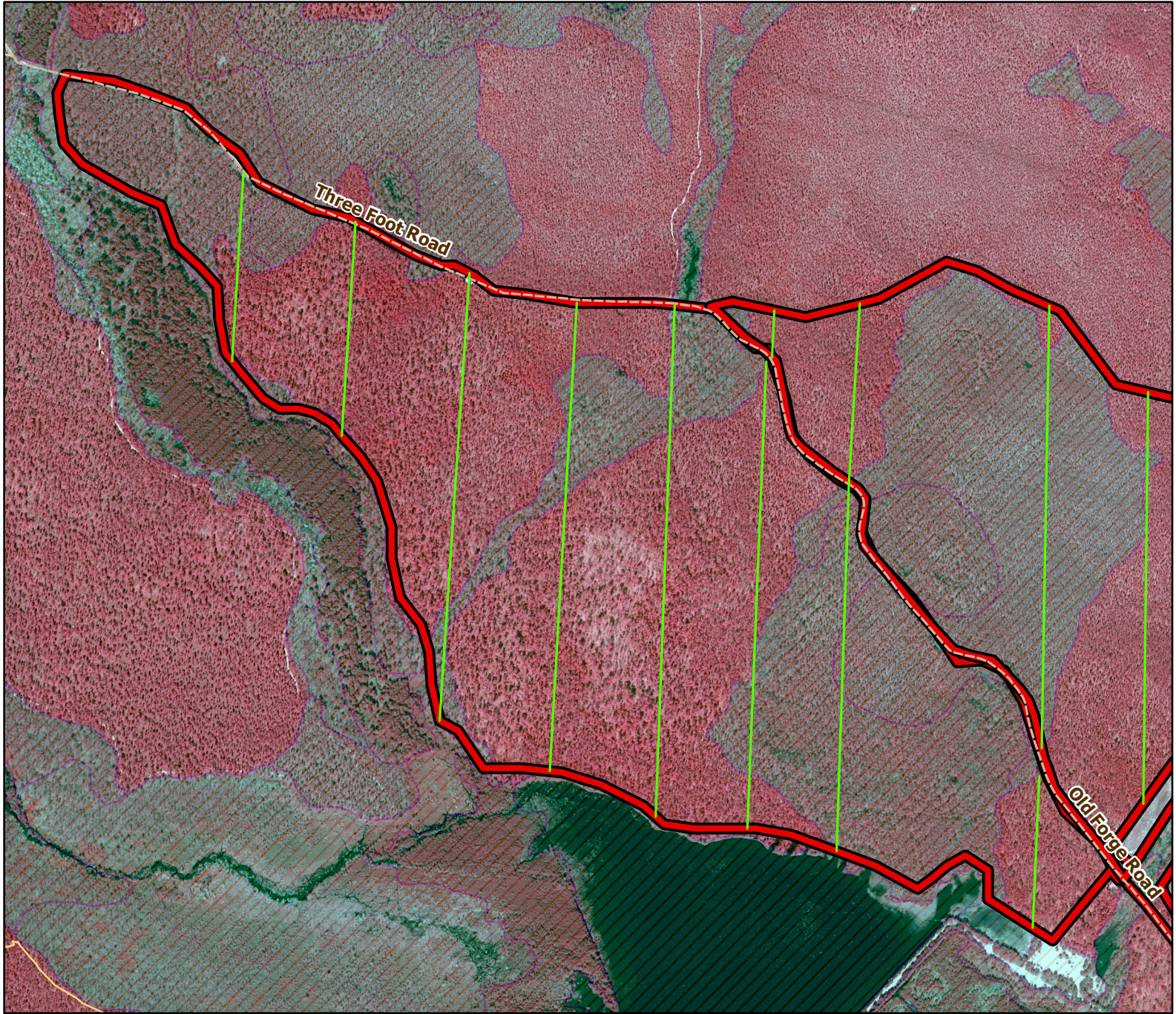




2019/2020 Season Prescribed Burning LMR Determinations - LMR ID 19-049*



SFW-3FT-02

Conditionally Approved

ONLM COMMENTS:

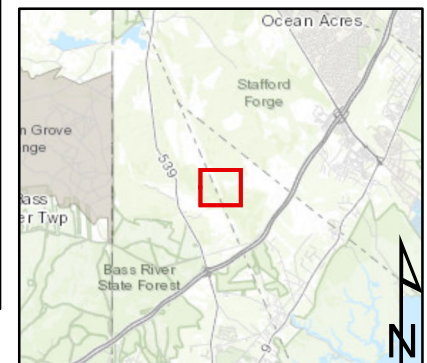
2018: Mixed intensity Rxb recommended to maintain pine-shrub oak (Pb4/5); Minimize vehicle activity in wet or grassy areas along NE bdy road due to Knieskern's beaked rush in road-side scrape
2020: line through wetlands omitted; additional approval required for roadwork (impacts to beaked rush)

ENSP COMMENTS: none

SFS COMMENTS: none

HPO COMMENTS: none

*Only plow lines were reviewed in LMR 19-049. Unit was approved for 2018/2019 season.



Approved *new* lines Existing lines Approved unit Woods Roads Wetlands 300 ft

MTC, NJFFS 20200104