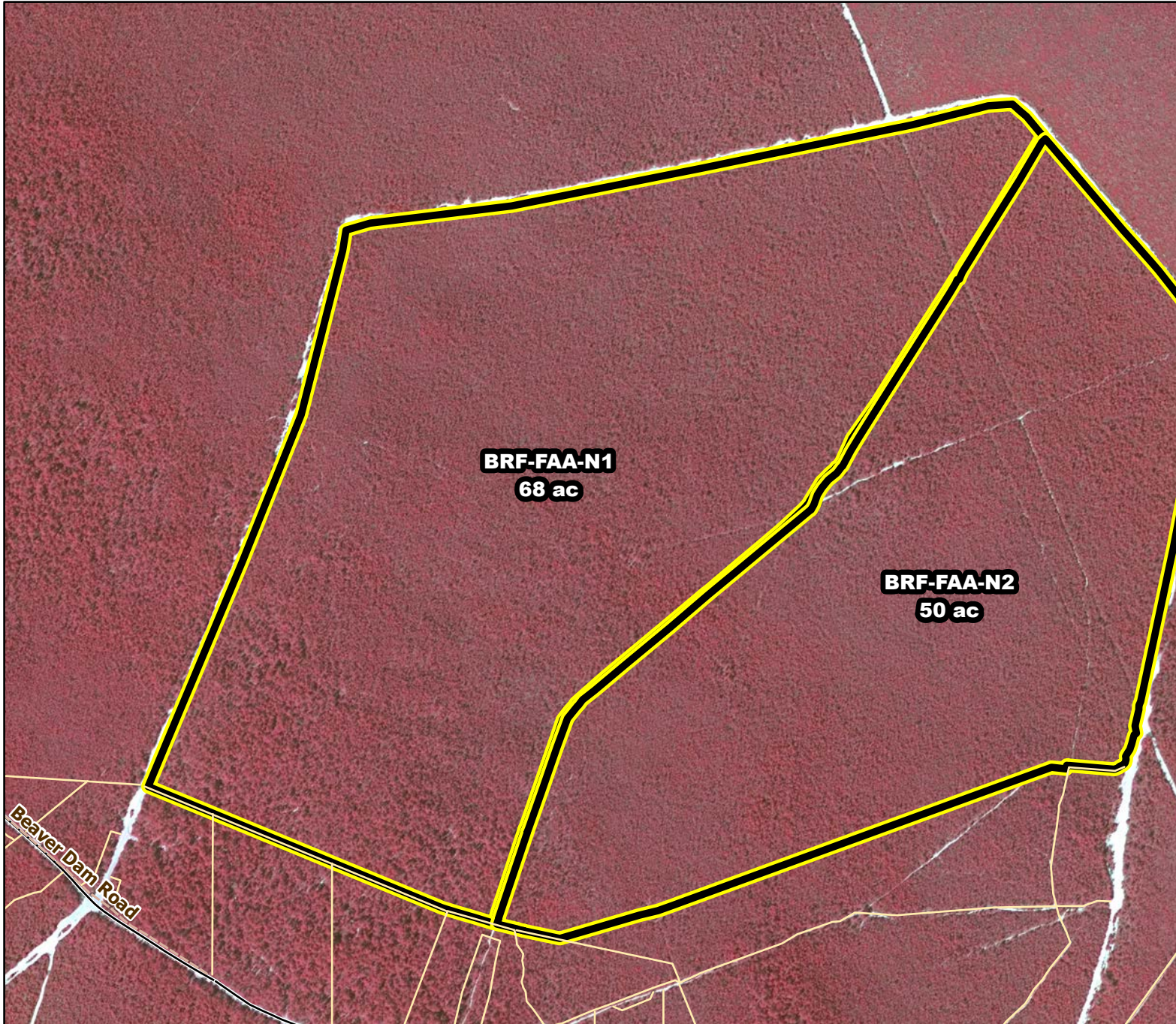




# Prescribed Burning LMR Determinations

Last Approved Year:  
**2023**



## **BRF-FAA-N1**

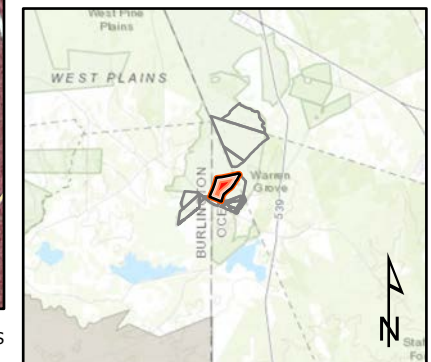
**Conditionally  
Approved**

**ONLM COMMENTS:**  
2019: BRF-FAA-N - Use revised polygon; Pushline needed on revised SE boundary, to exclude RxB from broom crowberry in BRF-FAA-N-X1, etc.; mixed intensity burning recommended; Pine plains last burned in 1963

**ENSP COMMENTS:**  
Burn 11/15-3/15, Create Pushline 5/15/-9/10 (Herp Concerns) with possible extension until 3/31 with an ecological justification

**HPO COMMENTS:**  
no comment

**SFS COMMENTS:**  
Other LMR constraints are met



Proposed units Existing lines Woods Roads

600 ft

MTC, NJFFS  
2021.01.05