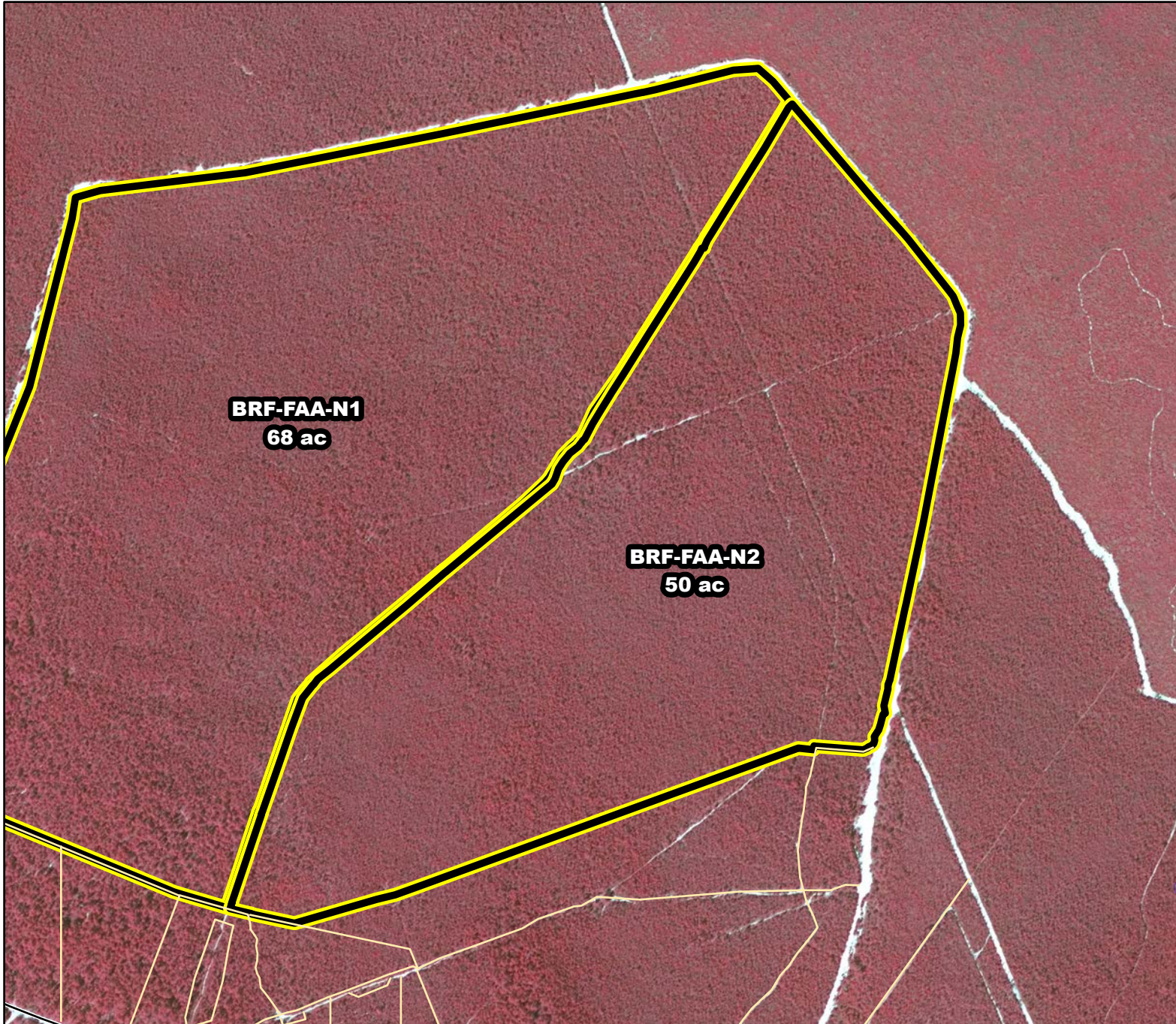




Prescribed Burning LMR Determinations

Last Approved Year:
2023



BRF-FAA-N2

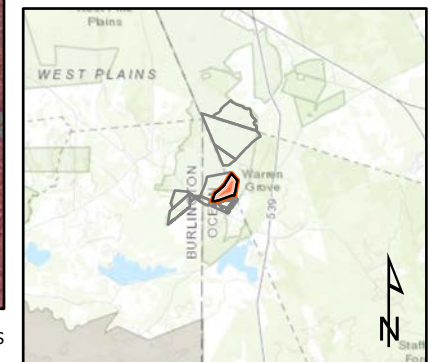
**Conditionally
Approved**

ONLM COMMENTS:
2019: BRF-FAA-N - Use revised polygon; Pushline needed on revised SE boundary, to exclude RxB from broom crowberry in BRF-FAA-N-X1, etc.; mixed intensity burning recommended; Pine plains last burned in 1963

ENSP COMMENTS:
Burn 11/15-3/15 , Create Pushline 5/15/-9/10 (Herp Concerns) with possible extension until 3/31 with an ecological justification

HPO COMMENTS:
no comment

SFS COMMENTS:
Other LMR constraints are met



Proposed units Existing lines Wetlands

600 ft

MTC, NJFFS
2021.01.05