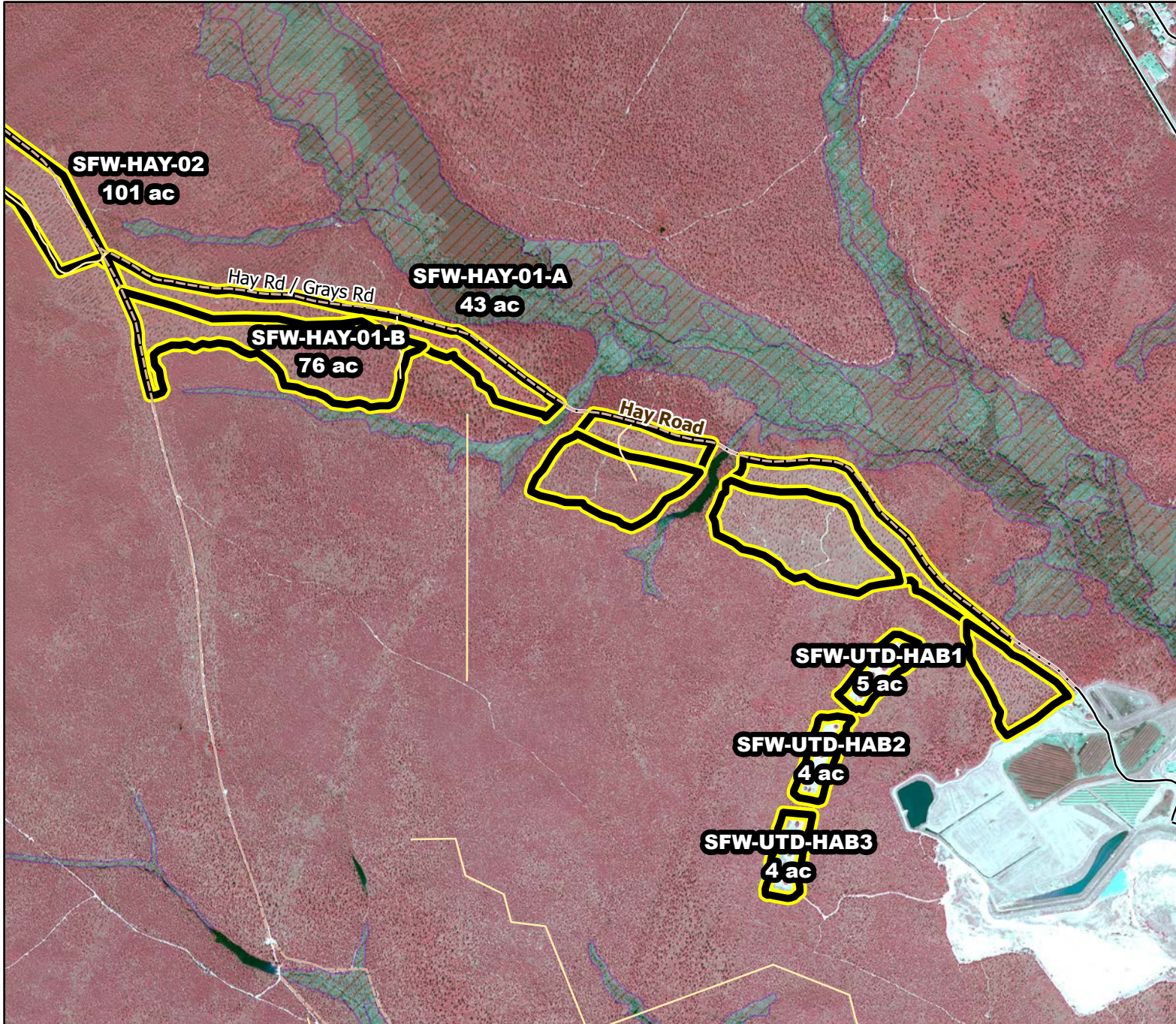




Prescribed Burning LMR Determinations

Last Approved Year:
2023



SFW-HAY-01-B

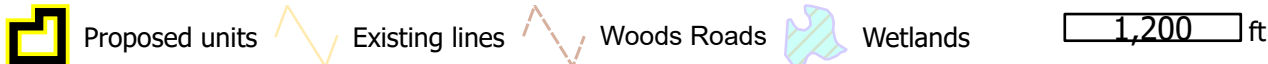
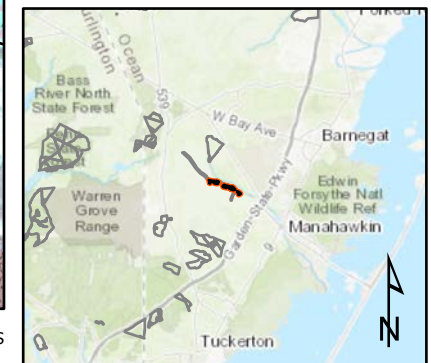
**Conditionally
Approved**

ONLM COMMENTS:
2019: Testing of growing season RxB approved, but need pushline at edge of broom crowberry fire exclusion unit; Correct overall polygon to reflect planned RxB unit relative to interior forestry unit

ENSP COMMENTS:
2019: Please advise DFW staff of burn schedule

HPO COMMENTS:
no response

SFS COMMENTS:
no comment



MTC, NJFFS
20210106