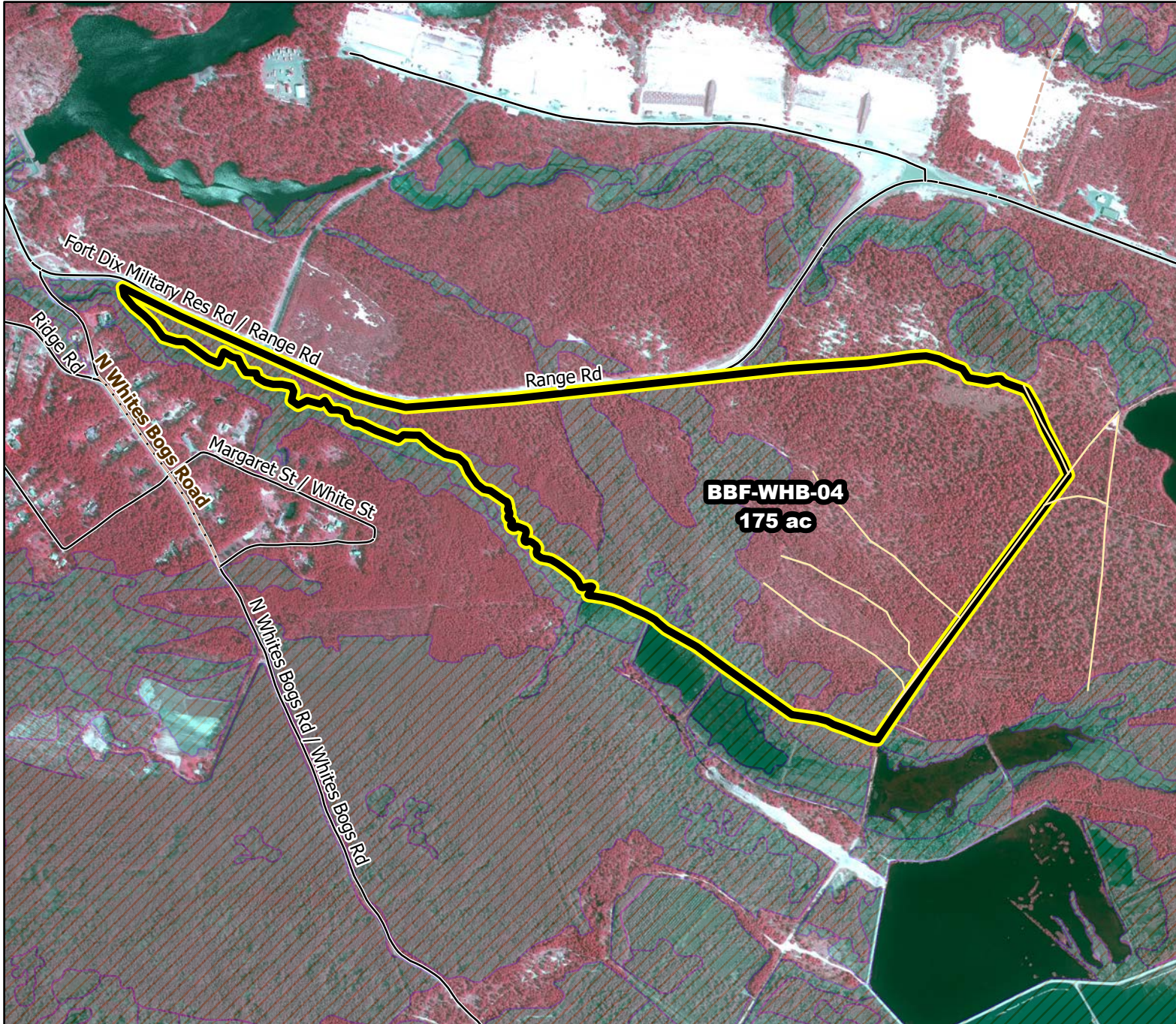




# 2020/2021 Season Prescribed Burning LMR Determinations - LMR ID 20-072



## **BBF-WHB-04**

**Approved**

### **ONLM COMMENTS:**

Recommend mixed intensity RxB in unit with pine lowlands, pine-shrub oak barrens and pine-oak-shrub oak woodlands.

### **ENSP COMMENTS:**

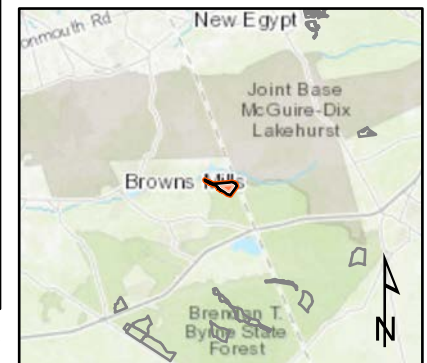
no comment

### **HPO COMMENTS:**

no response

### **SFS COMMENTS:**

no comment



Proposed units



Existing lines



Woods Roads



Wetlands

1,200 ft

MTC, NJFFS  
20201222