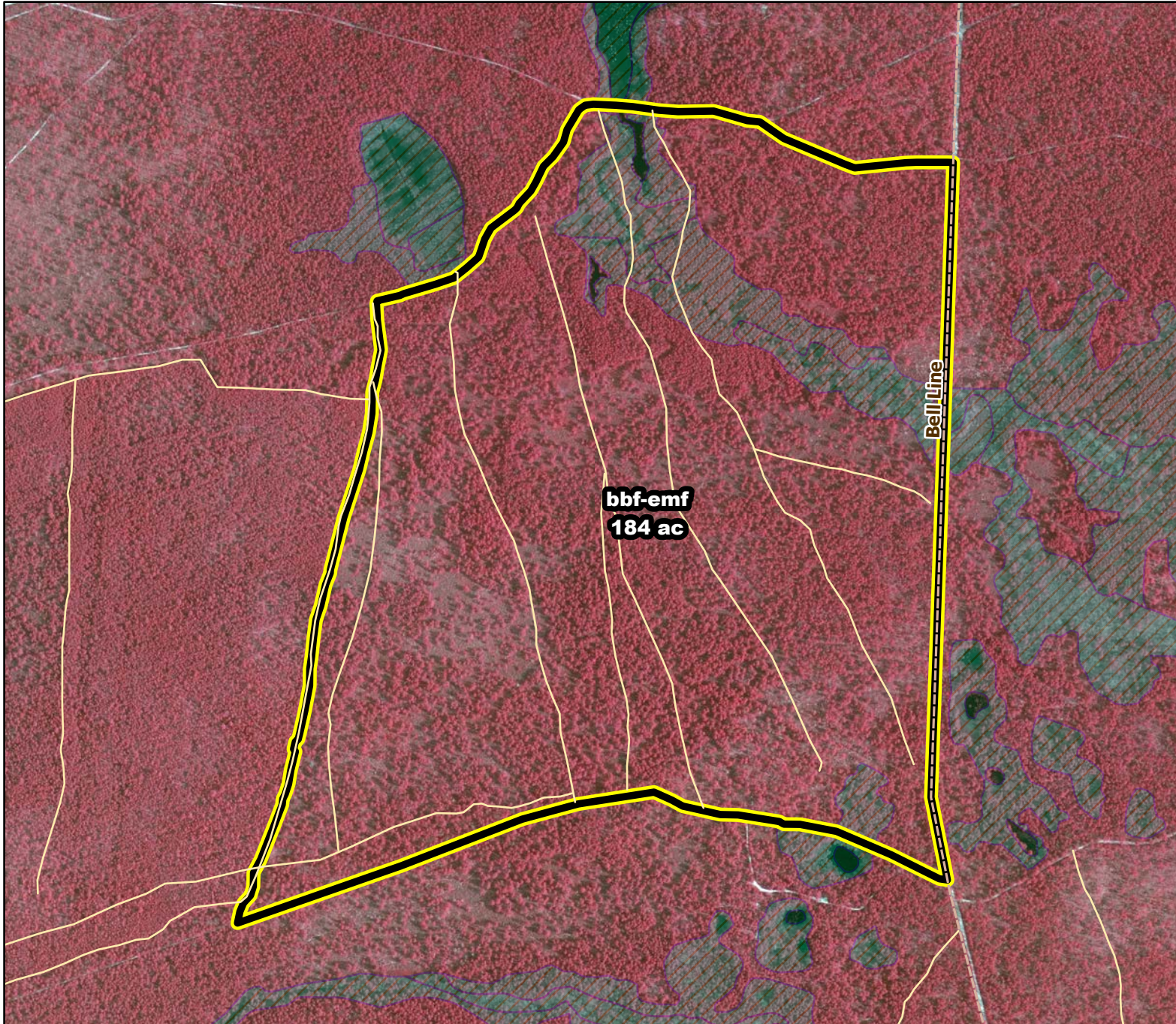




2020/2021 Season Prescribed Burning LMR Determinations - LMR ID 20-072



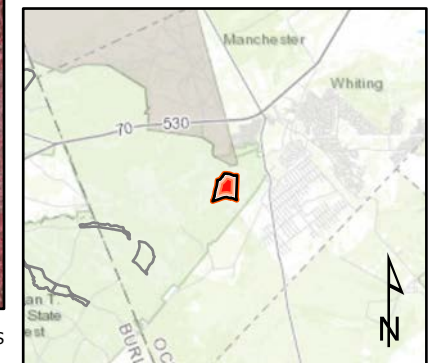
bbf-emf
Approved

ONLM COMMENTS:
Recommend mixed intensity RxB in unit with pine-shrub oak barrens, pine-oak-shrub oak woodlands, and pine lowlands,

ENSP COMMENTS:
no comment

HPO COMMENTS:
no response

SFS COMMENTS:
no comment



Proposed units Existing lines Woods Roads Wetlands

600 ft

MTC, NJFFS
20201221