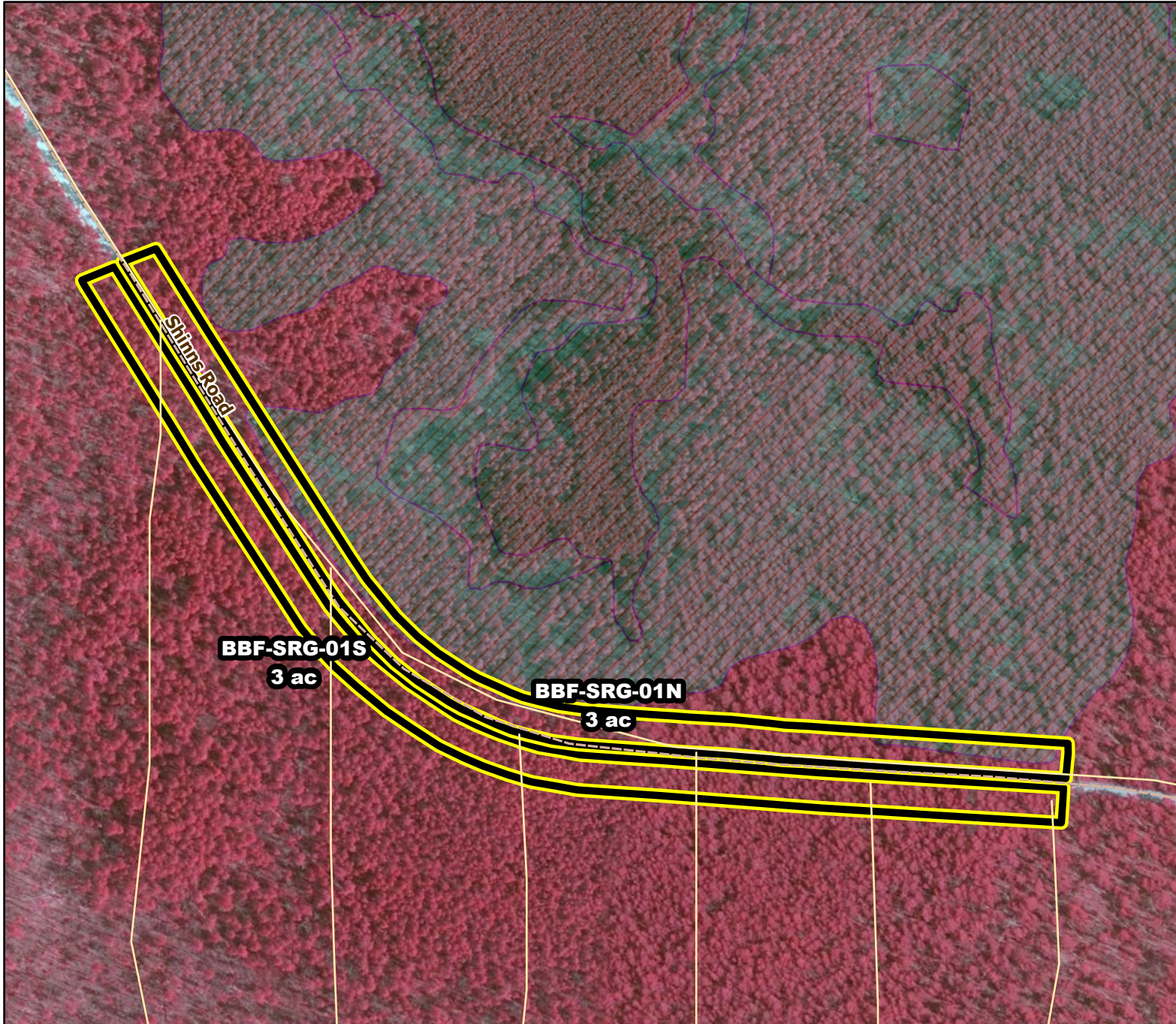




Prescribed Burning LMR Determinations

Last Approved Year:
2024



BBF-SRG-01N

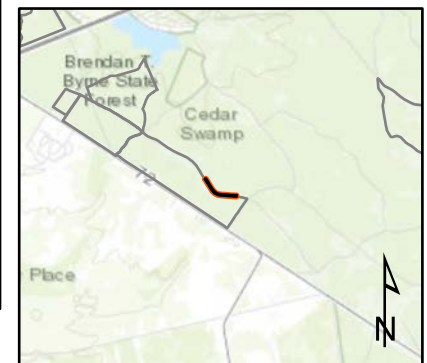
Approved

ONLM COMMENTS:
no comment

ENSP COMMENTS:
no comment

HPO COMMENTS:
archaeological sensitivity
along Spruce Run

SFS COMMENTS:
no comment



Proposed units Existing lines Woods Roads Wetlands

300 ft

MTC, NJFFS
2021.0105